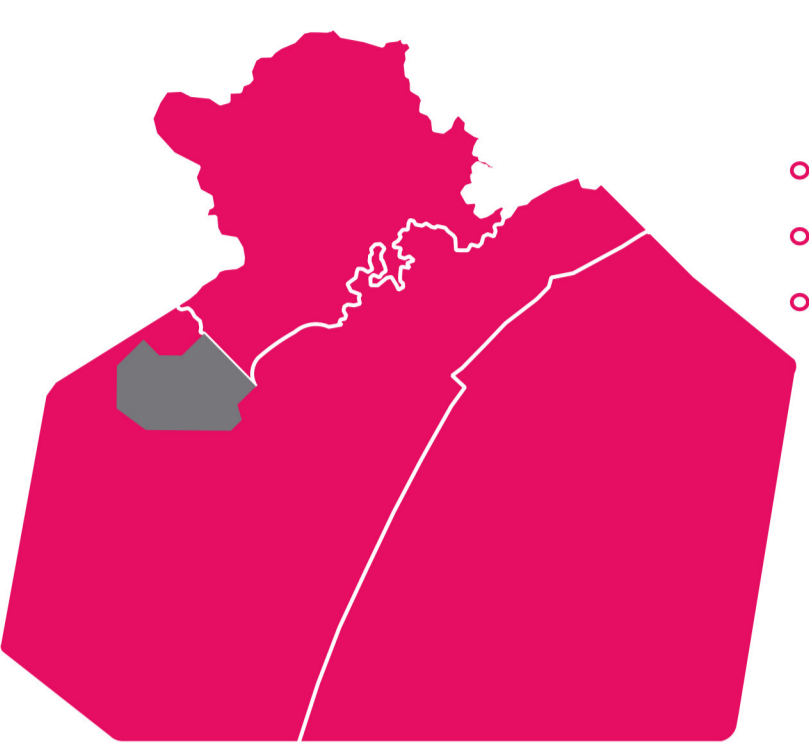


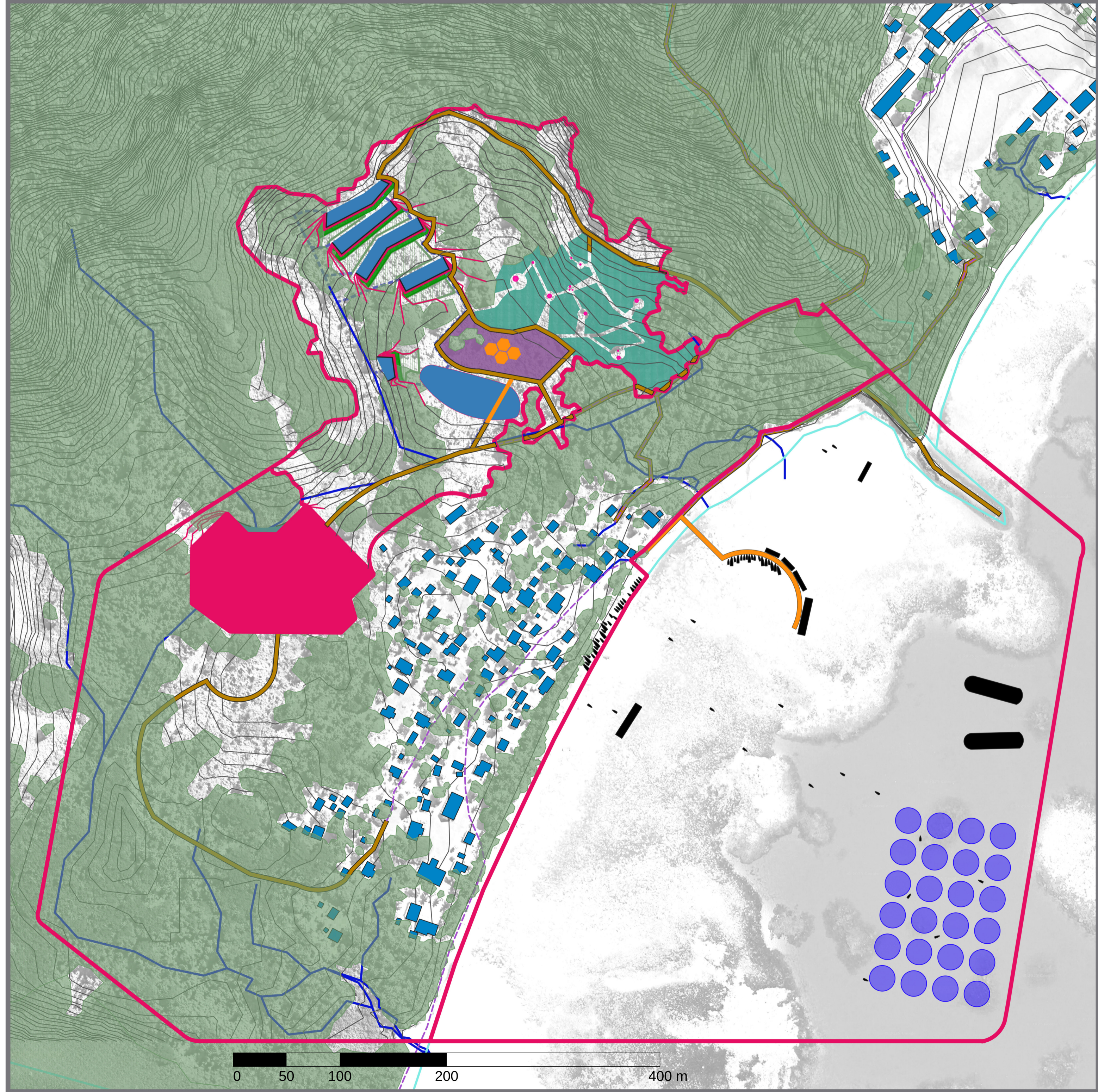
The **Marou Masterplan** aims to improve water management, food production and public space access.

The Masterplan covers an area of 60.8 hectares (ha).



The Masterplan is broken into three main areas:

- **Terrace Park** (9.8ha)
- **Marou Village + Design Site** (25 ha)
- **Harbour** (26ha)



Legend

Existing buildings

Green/Blue roofs integrated

Improved path network with bamboo steps

Play Park with indicative play equipment

Bamboo Grove with public art and paths

Modified contours for **Terrace Park**

Hemp gardens below **Water Terraces**

Allotment gardens below **Water Terraces**

Water Terraces

SuDS collection pool overflow for **Water Terraces**

Pontoon dock for improved access to **Harbour**

Shellfish production tanks: mussels or best equivalent.

Boat sizes
a. 1.5x5m
b. 4x14m
c. 4x20m
d. 7x35m
e. 15x56m

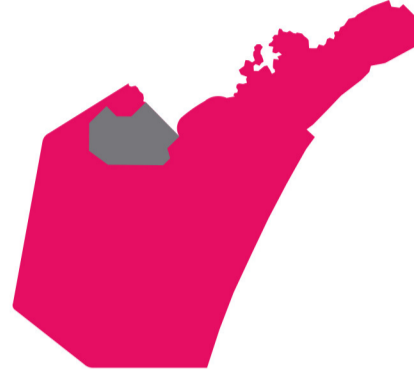


Terrace Park

The **Terrace Park** is a large new public space for village of Marou. It incorporates a system of terraces cut into the hillside, which are intended to maximise rainfall attenuation.

A sculpture park is proposed to be set into the **Bamboo Grove**. Residents and visitors would be able to enjoy contemporary sculpture and installations in a unique setting, in addition to producing a valuable material.

A **Play Park** is also proposed; community workshops would determine what was needed and it would be constructed over a series of intensive sessions.



Marou village

Marou would benefit from many new facilities and great connectivity between the **Harbour** and the new **Terrace Park**.

Path network improvement

Path network throughout the surrounding area extended to include the **Terrace Park** and **Design Site**. Steps formed by hammering in rows of narrow bamboo sections and then back-filling.



Design Site

The Design Site would provide a new centre constructed by the community from bamboo and hemp grown in the **Terrace Park**.

The new centre would provide exhibition and office space, and a new café set into the gardens. The ornamental terraces reference the larger ones in the **Terrace Park**, and would also store water year round.

Community Centre

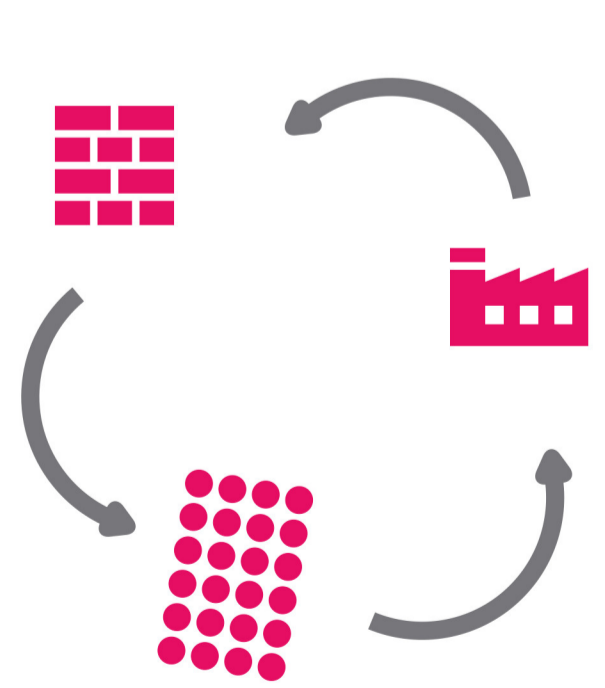
Indicative images of café and community hall.



Harbour

Hempcrete blocks

excellent insulation + biodegradable



Kiln-fired shells

sustainably sourced + traditional binder



Mussel production

sustainable food source + shells provide natural source of lime

