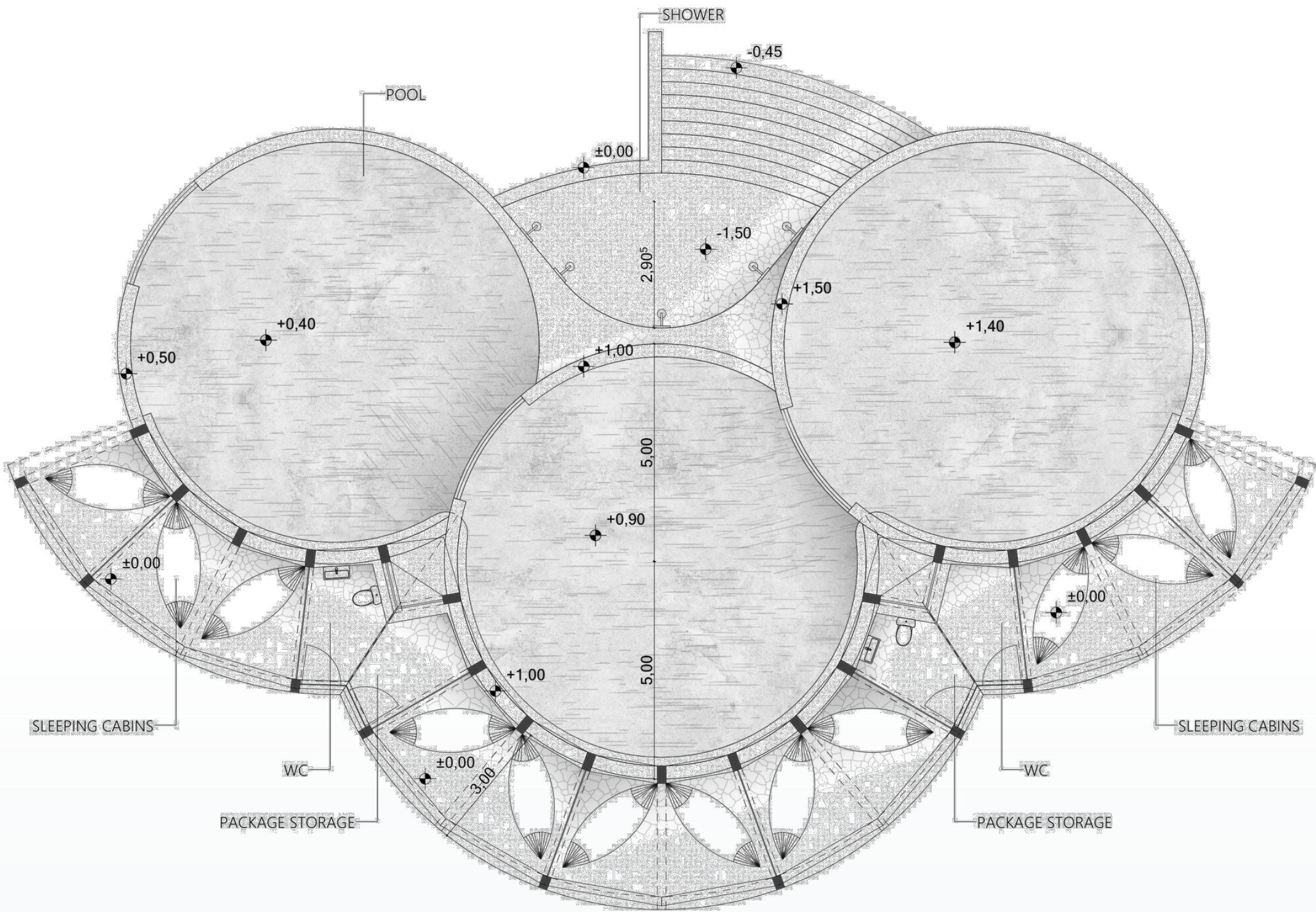
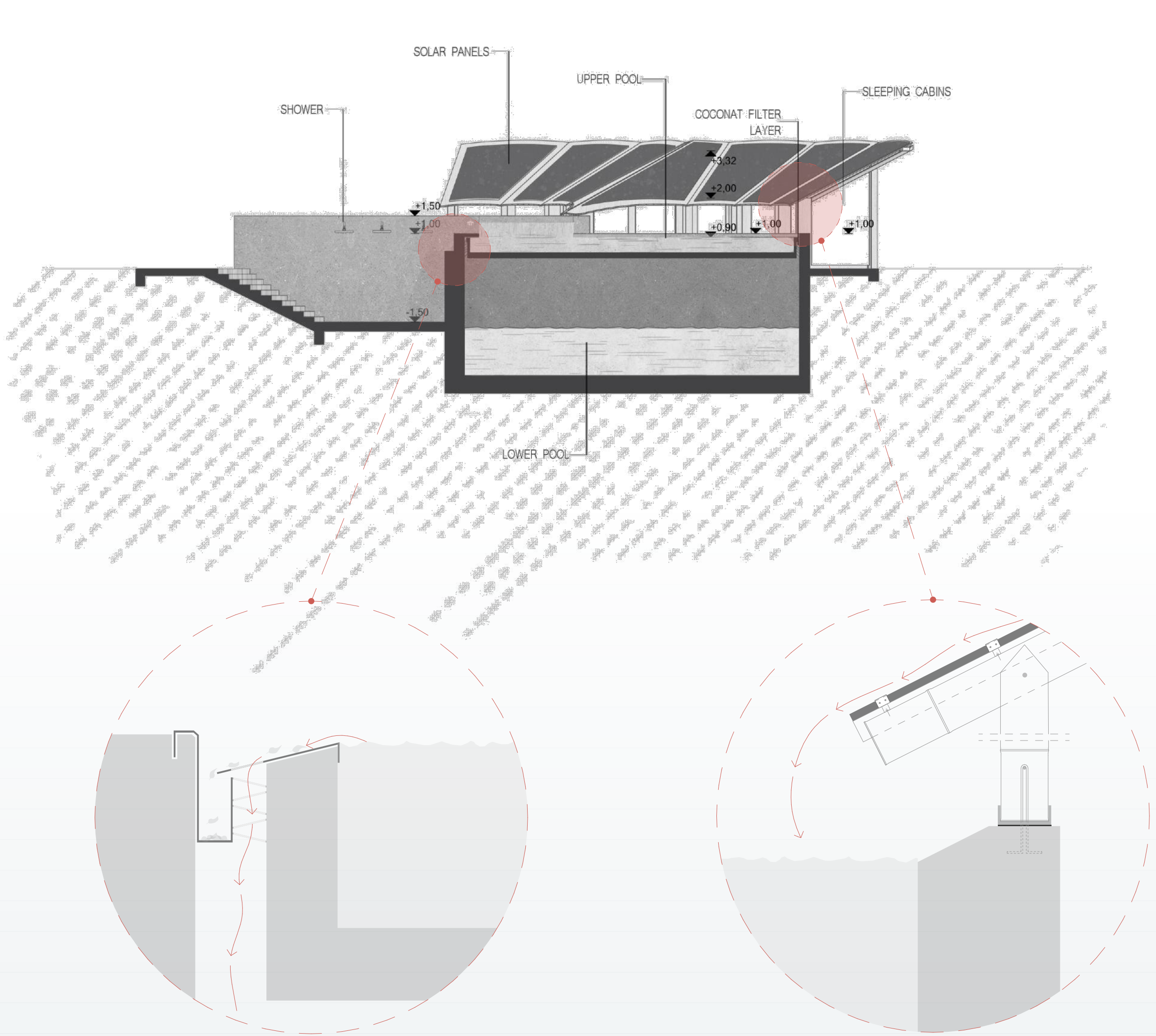


SOLAR BLOOM

The planned building chain aimed to drain the excess water coming from the loaded stream during the rainy season and store it in underground cisterns, which will supplement the water consumption of the locals during the dry season. Furthermore, water from the sloping, solar-covered roofs into shallow pools is also collected in these underground tanks after flowing through a multi-layered coconut fiber filter system and filtering out any contaminants.

Sustainability is a key focus of the design, with the roof structure made of bamboo, the walls and foundation made of locally quarried rock, and the pools made of “coconut concrete” to ensure watertightness. The building adapts to the local terrain in every way, not destroying it but complementing it, while providing space for community programs for the locals, as well as shelter and accommodation for visitors.



The architectural concept not only responds to the challenges posed by nature, but also creates space for a new and more livable future. The design is not only practical with its poetic form, but also deeply human, a symbol of a symbiosis between nature and man, where the flower is not only a formal element but also an image of the life-giving system.

