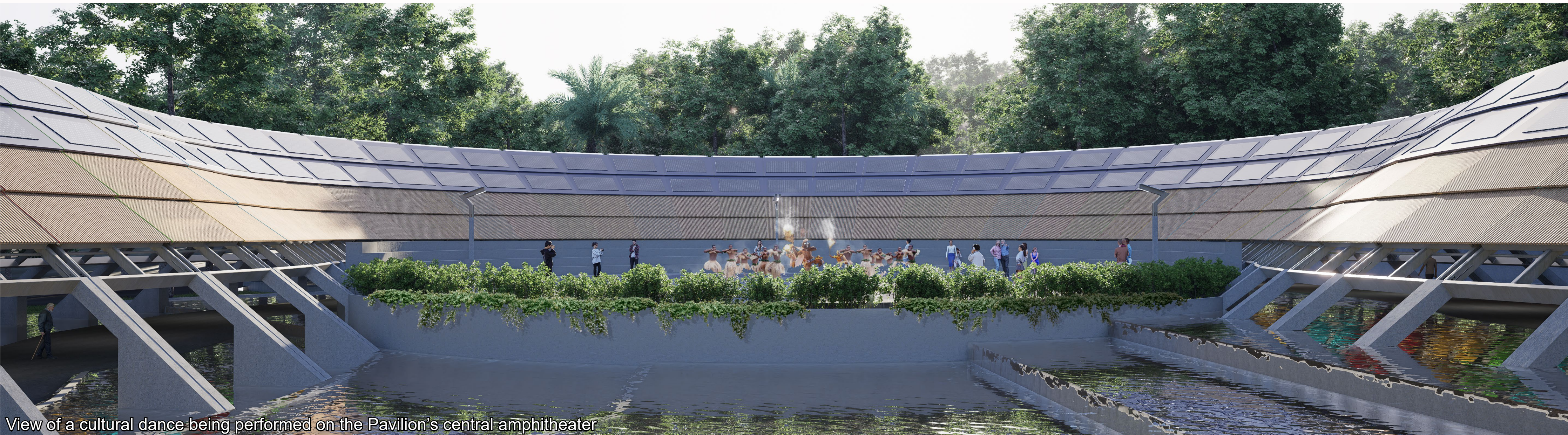
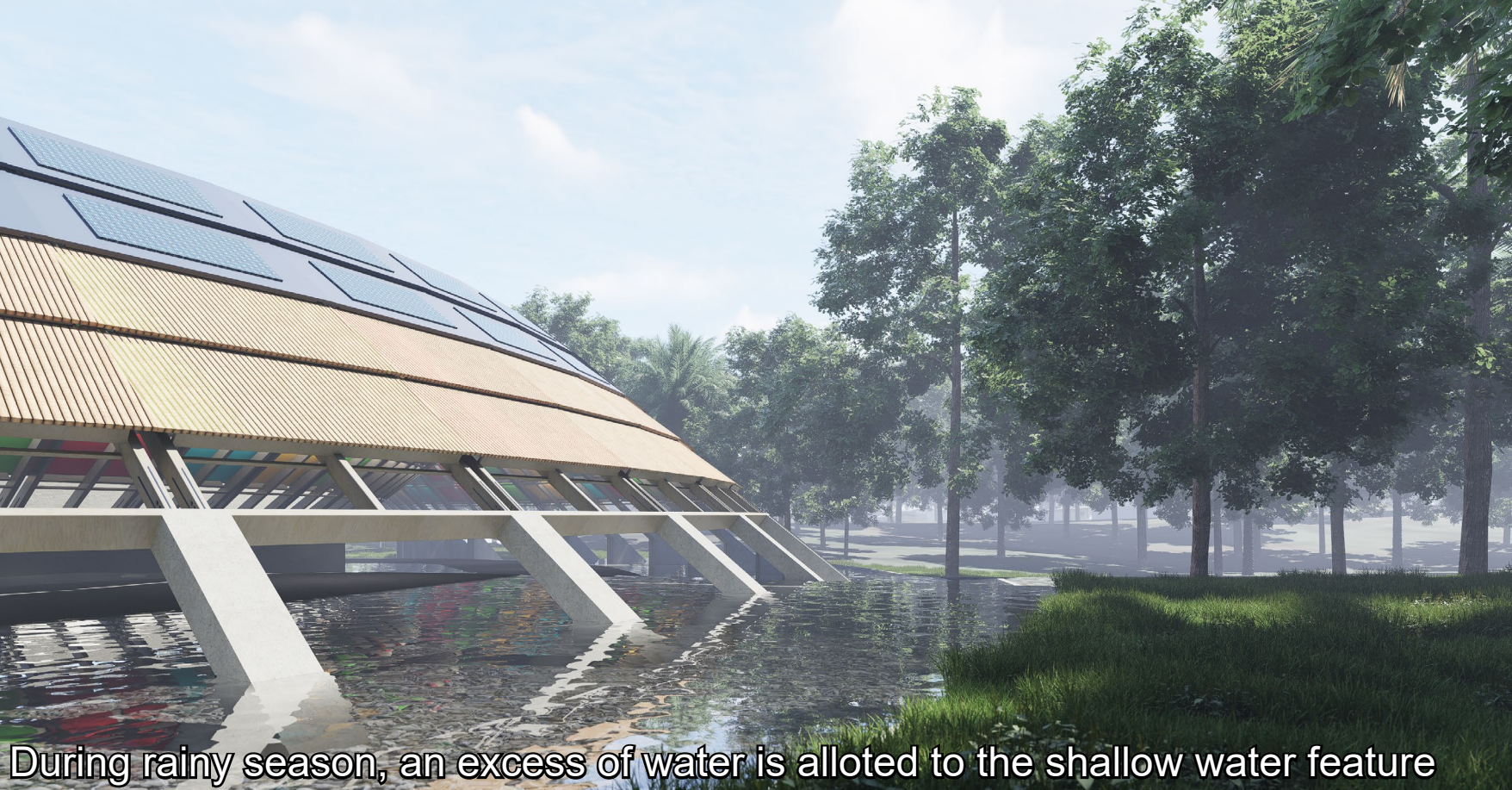


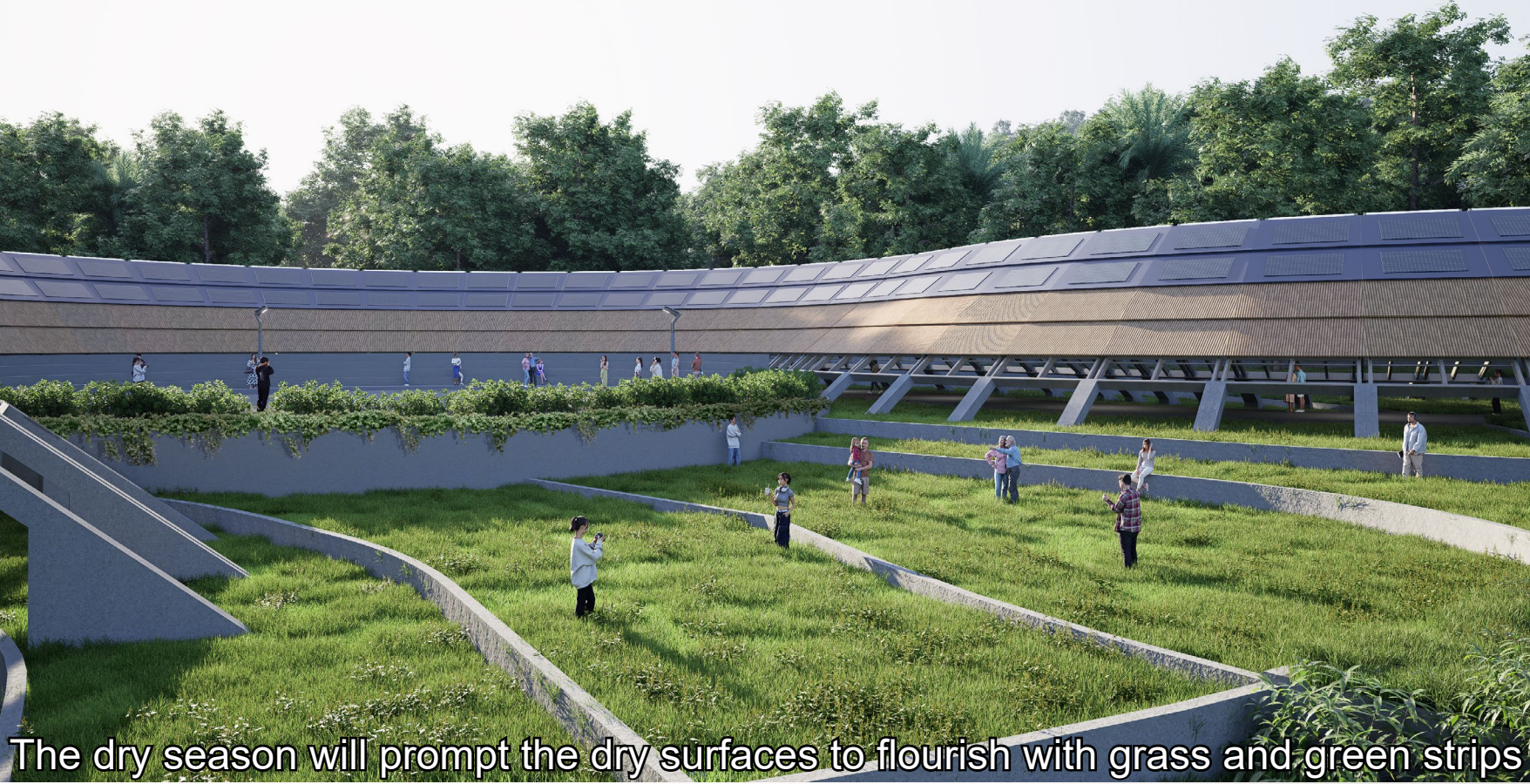
A view of the Pavilion exit leading to the park and pathways



View of a cultural dance being performed on the Pavilion's central amphitheater



During rainy season, an excess of water is allotted to the shallow water feature



The dry season will prompt the dry surfaces to flourish with grass and green strips



The Pavilion pathway can be curated with seats, artifacts, and displays

Site Strategy

The Pavilion is centrally located, maximising surrounding space for a public park. Two entrances connect it to Marou Village and the existing pathway, integrating it into tourism activities like cultural dances, local crafts, and festivities. Its position strengthens ties between the community and its infrastructure.

Generous open spaces enhance the community's connection to the greenery, providing areas for relaxation and interaction. A light-touch intervention and minimal terrain grading facilitate stormwater collection from the roof and existing channels into the reserve tanks. New planting areas for local flora around the pavilion will provide habitats and improve biodiversity.

The Pavilion's adaptable spaces encourage local activities and community events, inviting participation from both Marou Village and neighbouring communities. It serves as a hub for cultural exchange, collaboration, and community building.

