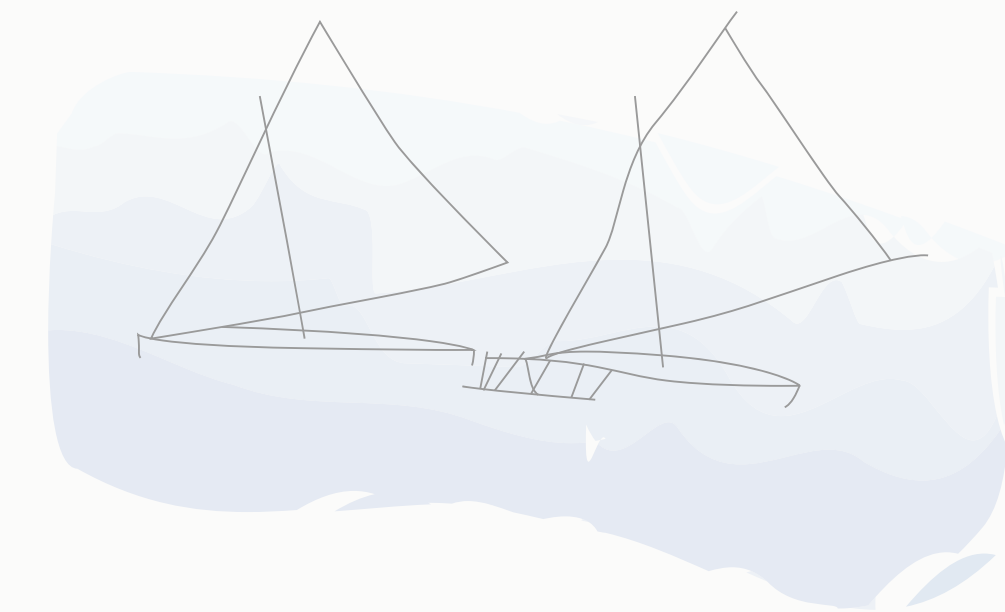


Cultural and Natural Context

Building on local knowledge of sailing vessels, Land Sails is a string of cloth solar sails, arranged lightly on the land in a series of modular units following the solar path. The sail references the triangular shape of a Camakau and Drua vessels arranged as migratory birds in flight. The supporting structure is inspired by Mangrove roots and animal vertebrae. Each unit is human scaled to be compatible with the uneven terrain and sensitive to the building sizes in traditional Fijian villages and modern Marou.

The design site will become an environment for a new seasonal wetland park with walking trails and agriculture plots. The wetland park will be engineered to fan out and slow the flow of water coming down Vatu Rua during the rainy season, stopping erosion, keeping precious topsoil on land where it is beneficial for agriculture while mitigating algae blooms and coral bleaching in the ocean. Percolating freshwater on island recharges the unconfined aquifer tying into the community's existing bore hole infrastructure while also protecting the stored water from mosquitos and evaporation. Recharging the unconfined aquifer keeps differential pressure to rising ocean water so that the existing boreholes are not infiltrated with salt water.



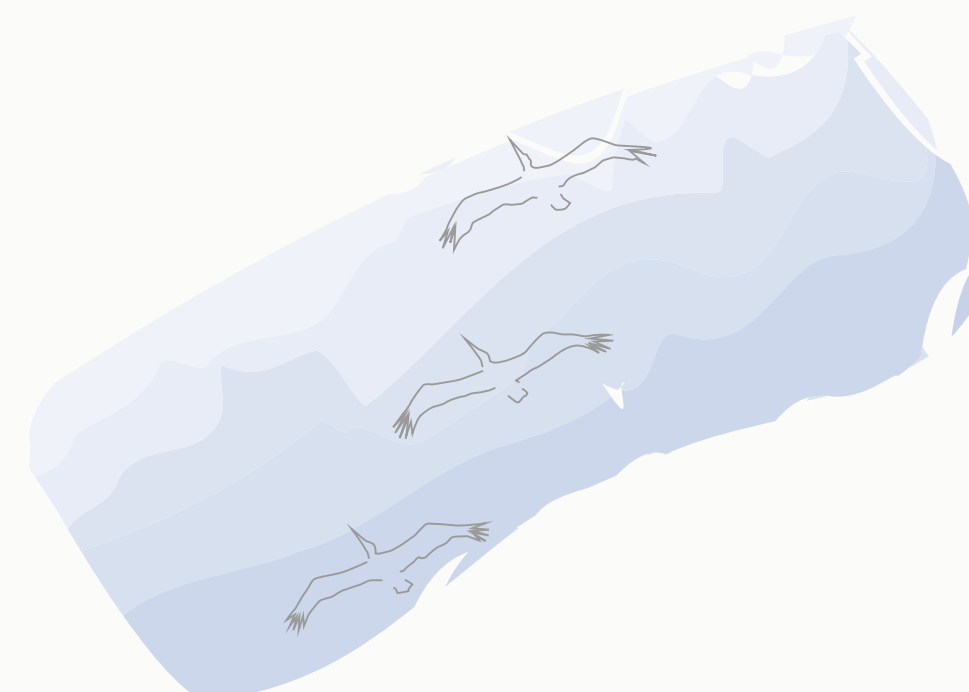
Camakau canoe triangular sail shape



Village context and scale light on land



Vertebrae modular pivot connections



Migratory birds formation

