

The project focuses on a concrete and achievable design for a public art intervention. The concept aims to give a powerful message capable of stimulating the imagination, by creating a unique and distinctive landmark without excessively consuming the valuable territory of the North Green Finger.

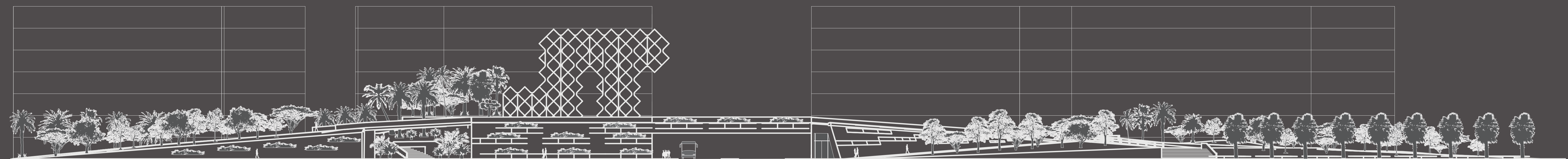
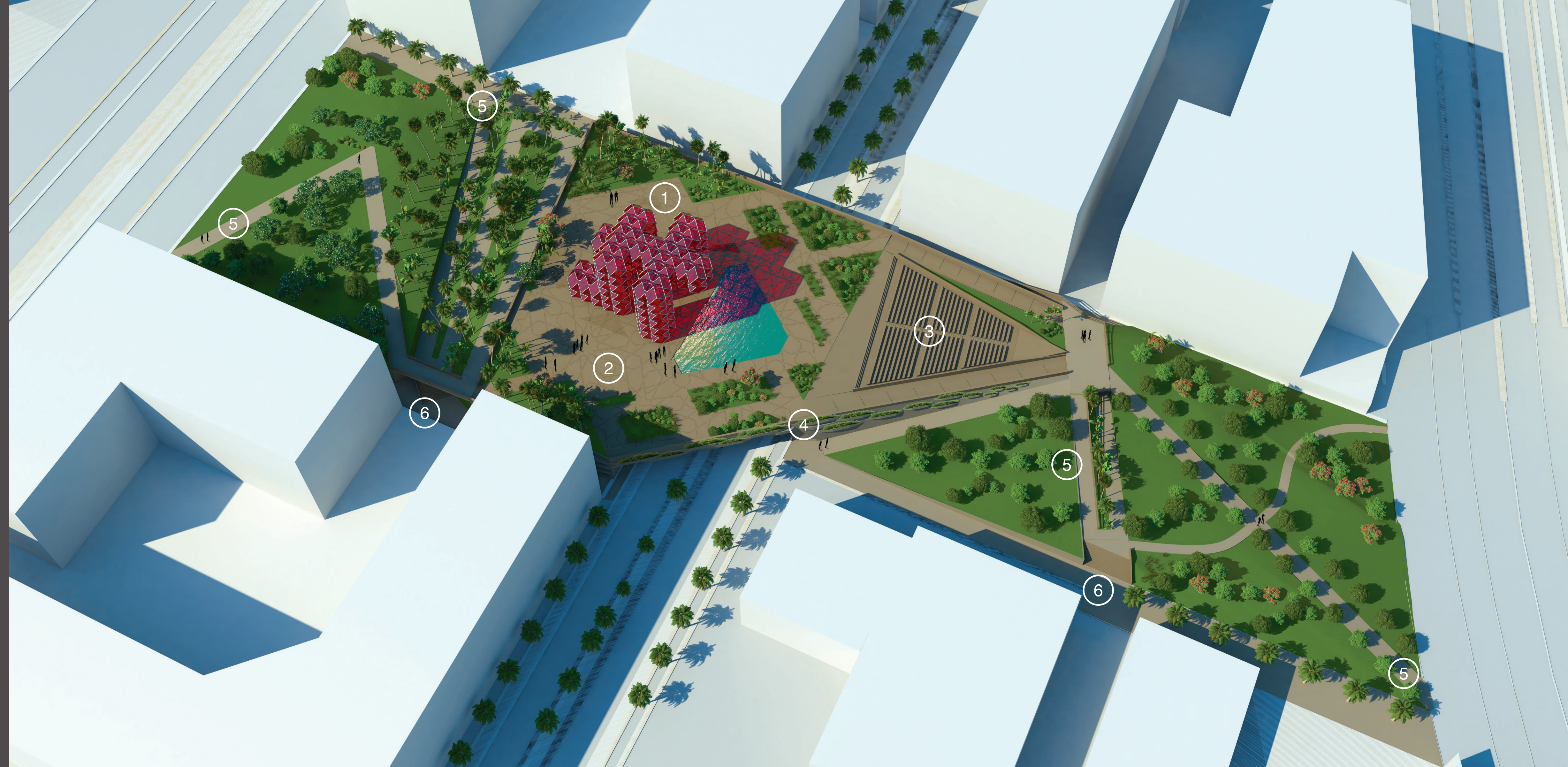
The surrounding area of the park has been interpreted taking into account the urban fabric, through the creation of pathways connecting the various areas of the site.

The heart of the park is intended for social activities, so in addition to being a panoramic square, the Agora includes an open-air theatre for evening shows, and an underlying covered space used for cultural and leisure activities whose entrances face the GRT Loop.

The technical facilities, such as the central energy storage unit, are located in underground rooms placed in the foundations of the sculpture.

LEGEND

- 1- Red Giant Sculpture - m H18 x 24 x 33
- 2 - Agora square (+ 7m) - 5,400 Sq.m.
- 3 - Outdoor Theater - 450 pax tribune
- 4 - Indoor Multifunctional Space - 1,500 Sq.m.
- 5 - Ramps
- 6 - Stairs



The Red Giant, 18 m high, is clearly visible from afar, being placed at the center of the square at a height of 7m, so the highest point of the sculpture is 25 m from the ground. The pedestrian and cycling paths of the park are designed to give glimpses of the whole, perspective views and visual surprises along the way.

Stunning views can also be seen from the GRT Loop. The raised square that spans above the road, offers glimpses of particular scenic strength, with the Giant appearing between the buildings. This solution allows more space for people and the uninterrupted connection of different portions of the park at the sides of the GRT loop.