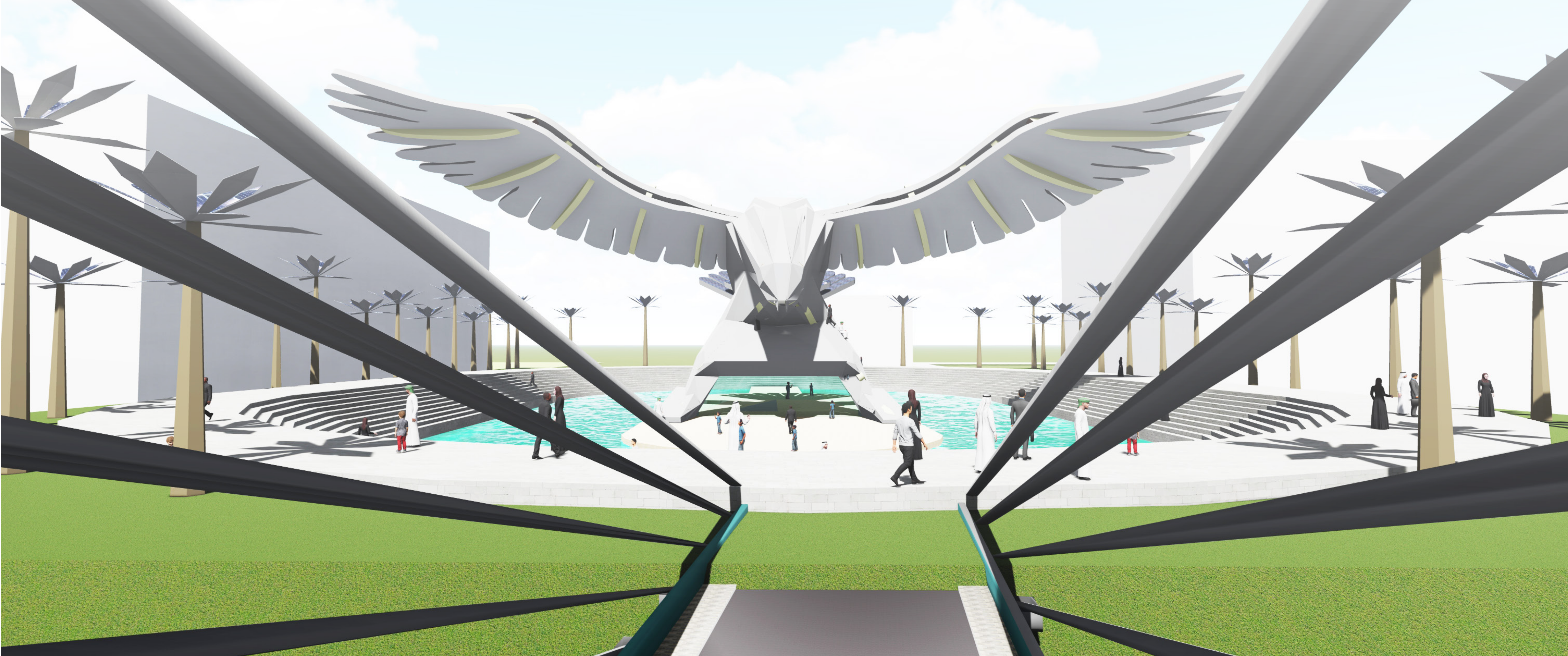


**The Electromagnetic Pavement**—As the pedestrian walk across the pavement system, the weight from their footstep compresses electromagnetic generators below, producing 2 to 4 joules of off-grid electrical energy per step. Low power Bluetooth connect to smartphone apps and the system can also communicate with building energy system.



Power output Solar Panels = 4,857 sq.m area coverage X 1000 watts per sq.m 4,857,00 x (%20) 0.20 efficiency per 1 sq.m panel)  
=971,400 x 5 hours of sun = **4,857,000** watts per day

Power output Pavegen (Electromagnetic Pavement) = 8,564 sq.m area coverage (@ %40 site walkable surface). 2,141,000 watts per day.