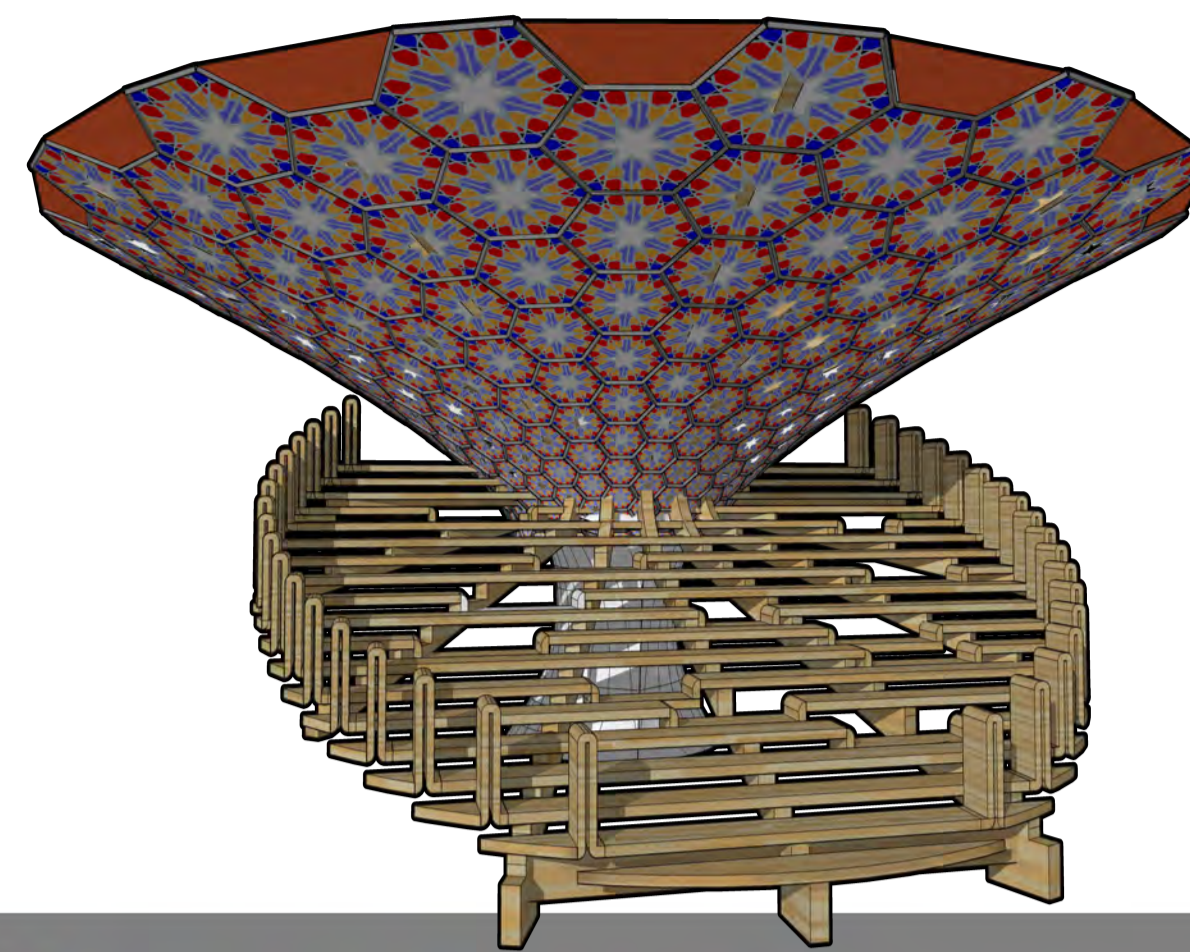
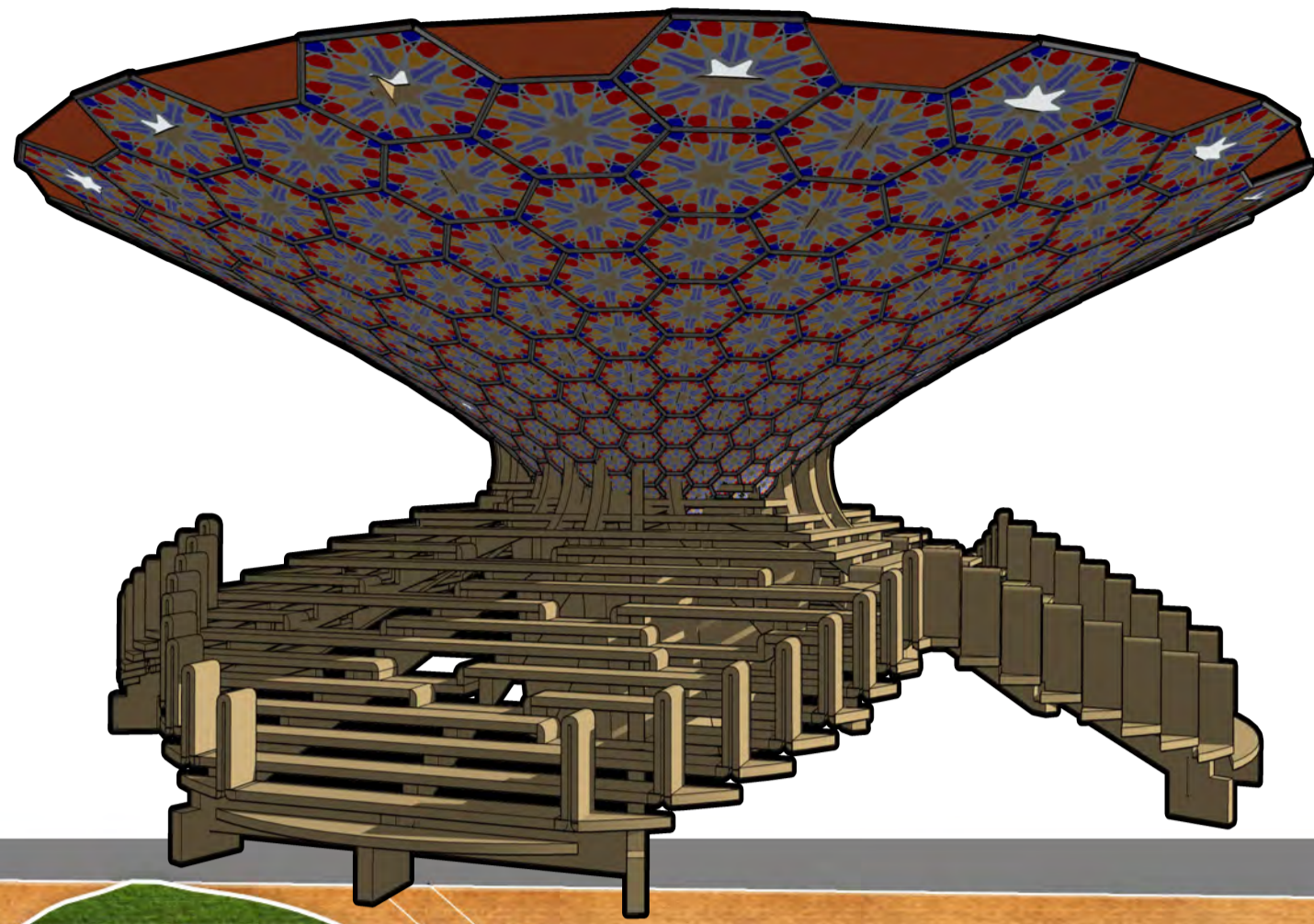


## SEATING

The structures are designed for crowds to sit on for street performances or as a meeting ground for those to enjoy food bought from stalls or the markets.

The structure is made from engineered timber and houses a small turbine within. The base is made of a heavier material and is thus colder for most of the day than the upper surface resulting in differences in air density.

The outer form is made from laser cut screens, which make the shadows cast by the rotating turbine to be dynamic. At night time, the same affect appliesto the artificial lighting housed within the catenoid structure.

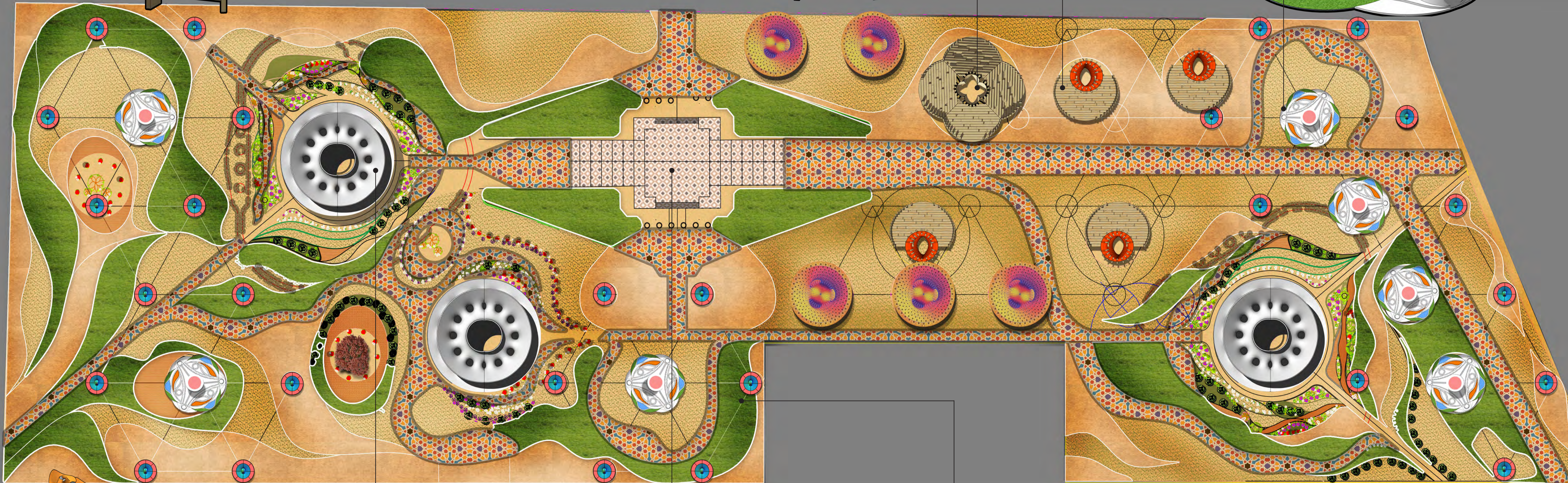
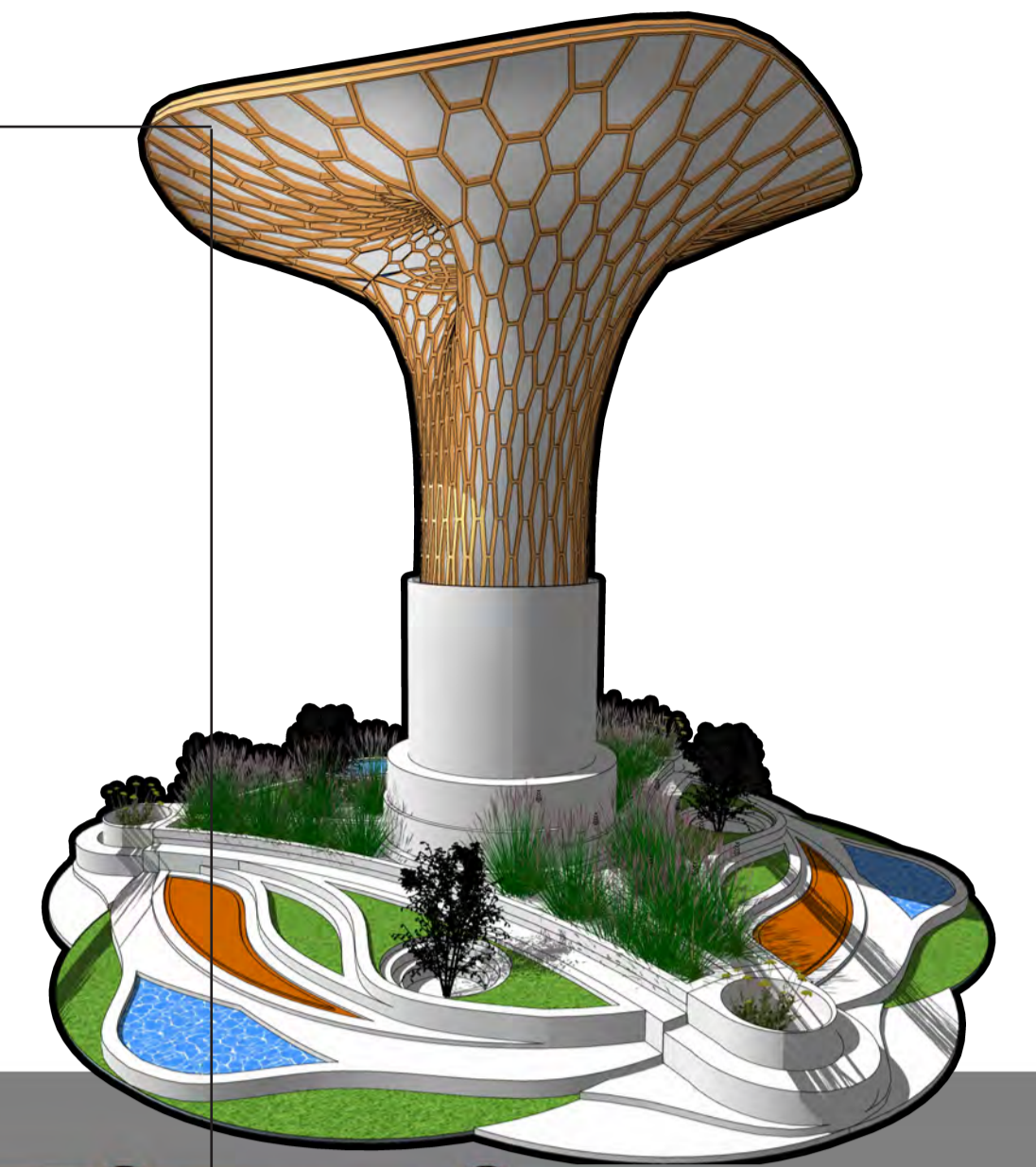


## TOWERS

The larger towers are the main energy generators and the catenoid shapes are meant to enhance the stack effect as well as the area heated by the sun creating a difference between the upper and lowest paths of the structure.

The structures are fabricated from timber through CNC methods to minimise their use of steel. The other surface is also laser cut sheet metal which allow the turbines to be seen and in the night time, light up the gardens with LED strip lights set within the structure.

The image on the left whows how the structures are integrated within the landscape flow which also in term add to the heavier thermal mass at the base of the structure.

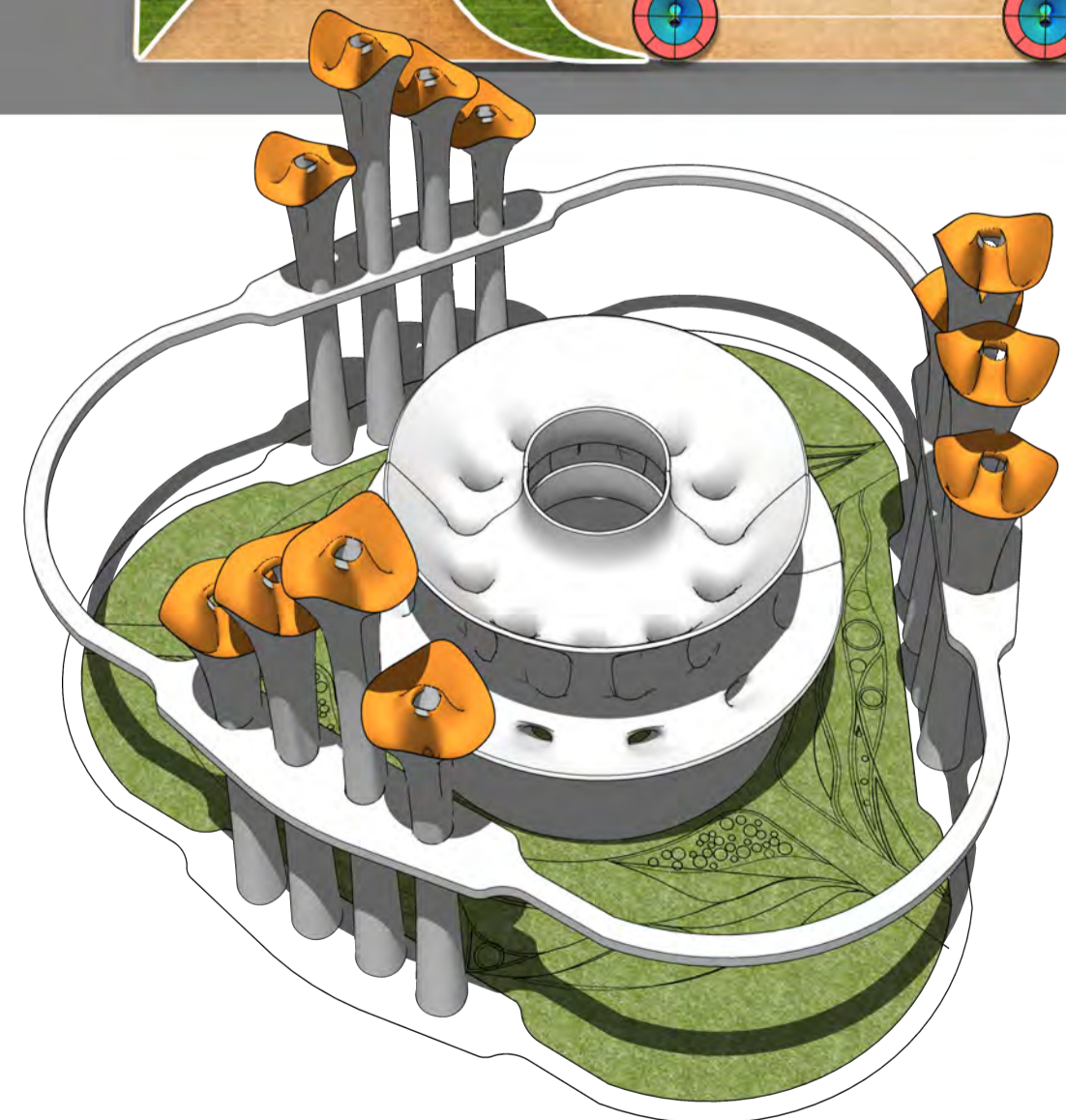


## GREEN HOUSES

The green houses are the centerpoints of the design and are the most elaborate structures. Unlike the previous structuers, these are fabricated with concrete using 3D printing.

Each catenoid of the greenhouse houses a small omnidirectional turbine which also animates it, as the movement of the blades change the shadows cast through the catenoid openings.

The image on the left also shows on the the suspended walkways, which throughout the site give an elevated view and add places of interest through the gardens.



## MARKETS

The gardens host a space dedicated to markets giving more incentive for patrons to visit. This can also be a place of selling 'stall' food. The markets have sloped 'green' roofs which support various drought resistant plants.



## PATHS

The paths between the towers also act as thermal mass as well as channels for cold air to move through. At the end of the arms are spaces to exhibit public art.

