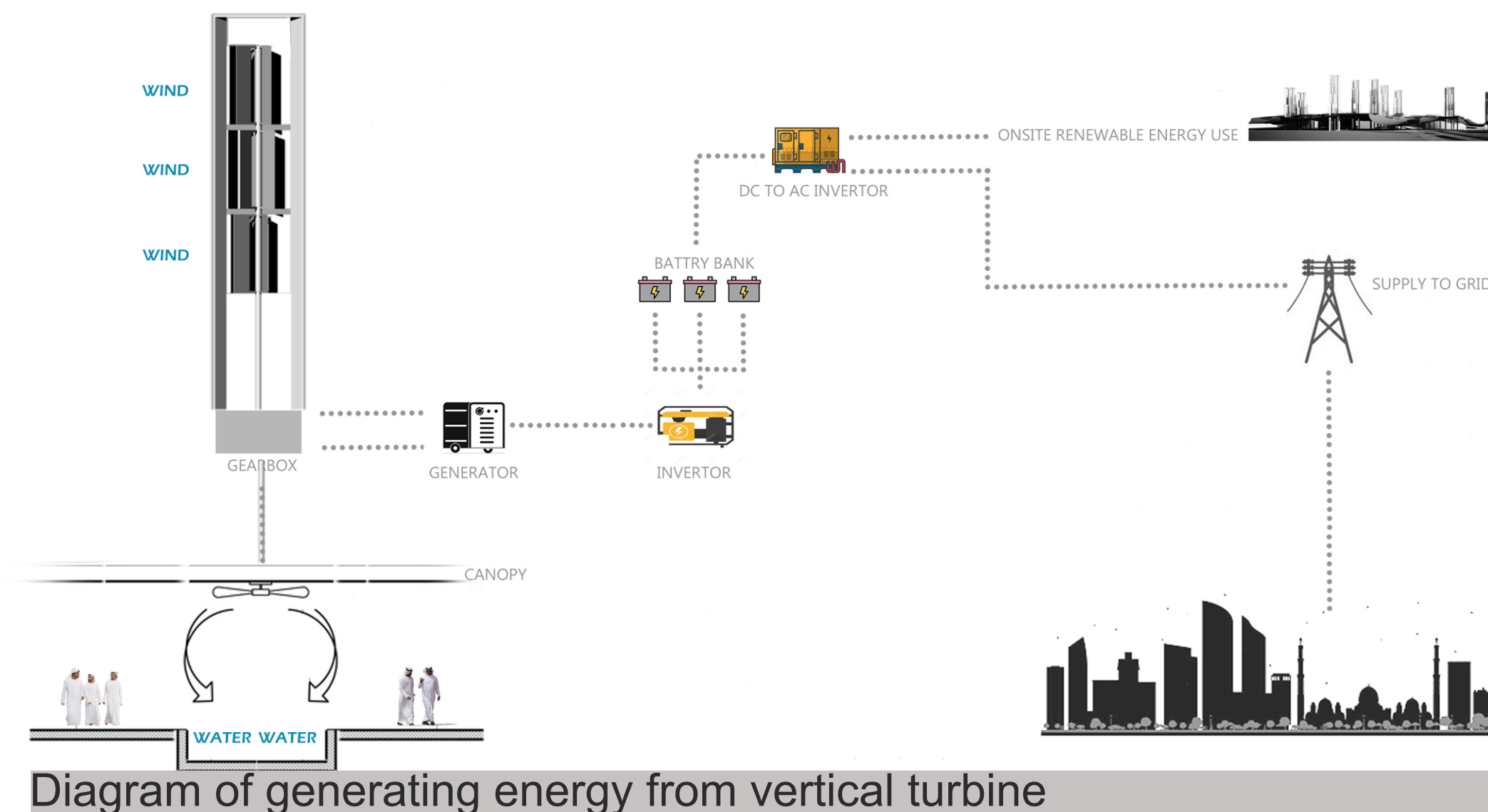


LAND ART GENERATOR

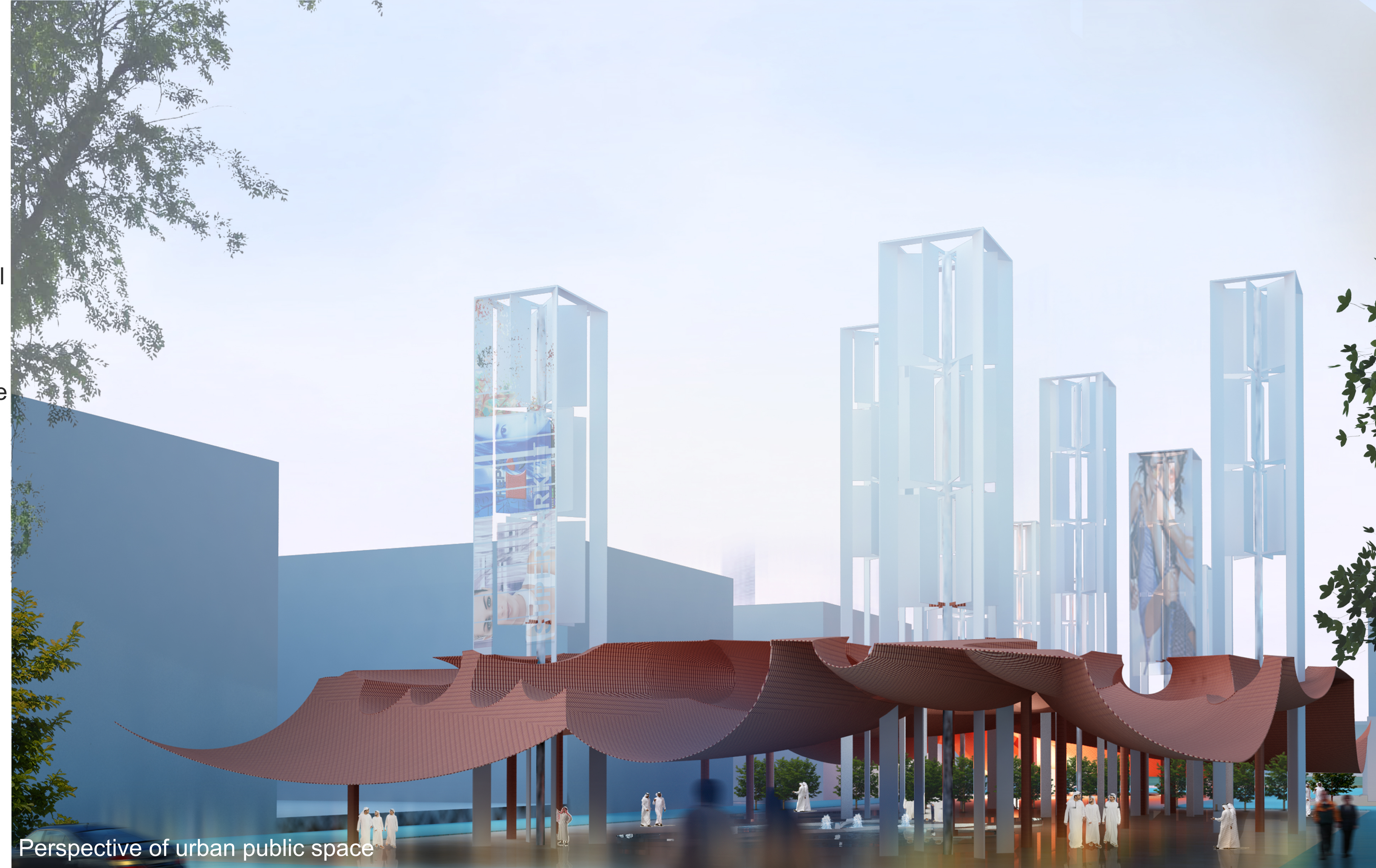
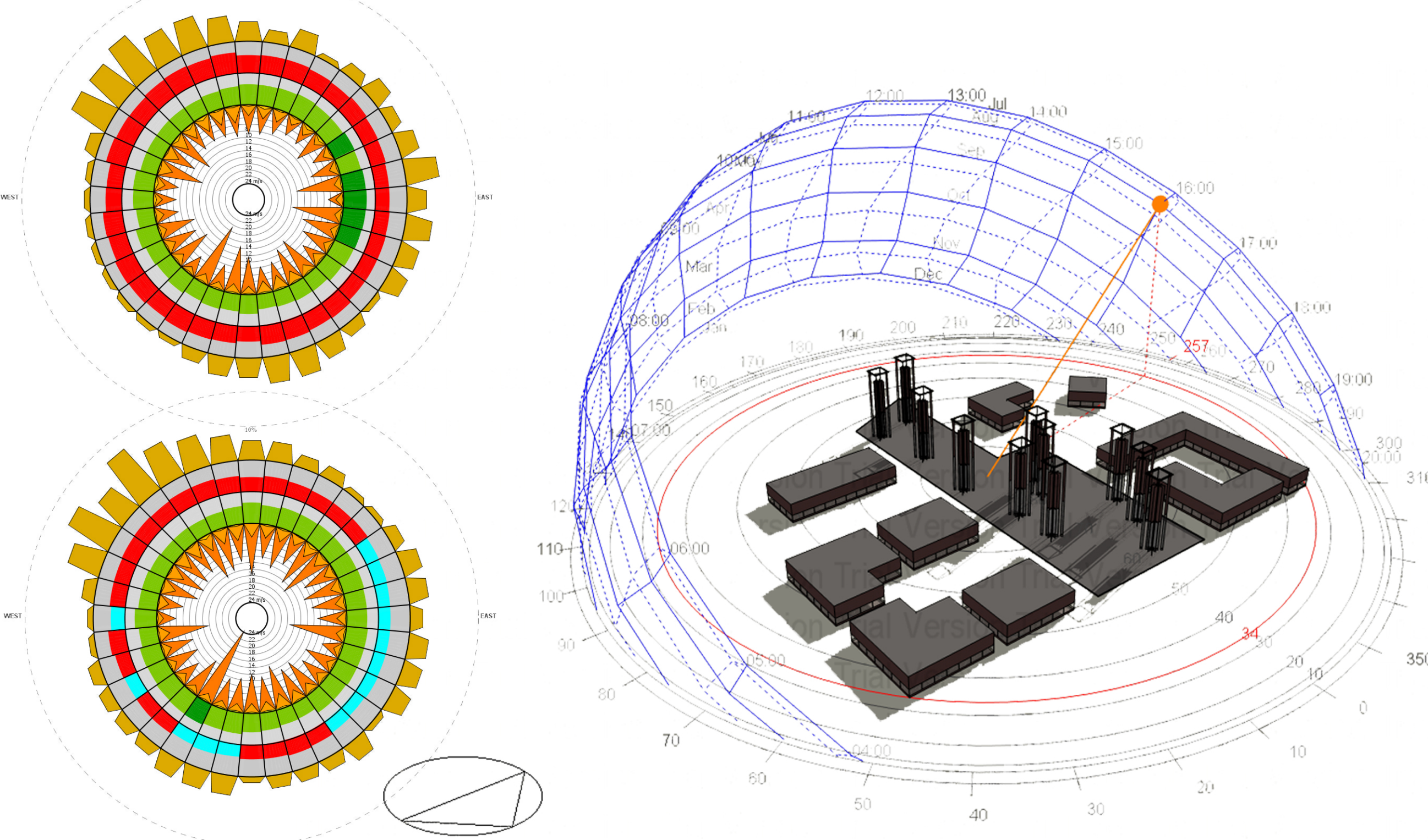
RENEWABLE ENERGY CAN BE BEAUTIFUL No. 02

For generating sustainable energy we inspired from the wind catchers which is a traditional Persian Gulf coastal architectural element to design a unique turbine system element that the energy generating from turbine rotation transfer under the roof that moves fans and causes natural ventilation in public space and generates electricity. According to average wind direction and velocity , it is estimated that each turbine structure would generates 10 kwh energy . the annual kwh is approximately 224000 kw.



The space under the roof provides opportunities for recreation, events, and interaction all night long. It is always active all day long. The road under the roof structure provides a place to pause and experience a resilient destination that makes people feel inspired by local culture.

LOCATION: ABU DHABI, - , ARE
Latitude/Longitude: 24.43° North, 54.65° East, **Time Zone from Greenwich 4**
Data Source: IWE C Data 412170 WMO Station Number, **Elevation 27 m**



Urban public space

Climate Canopy

