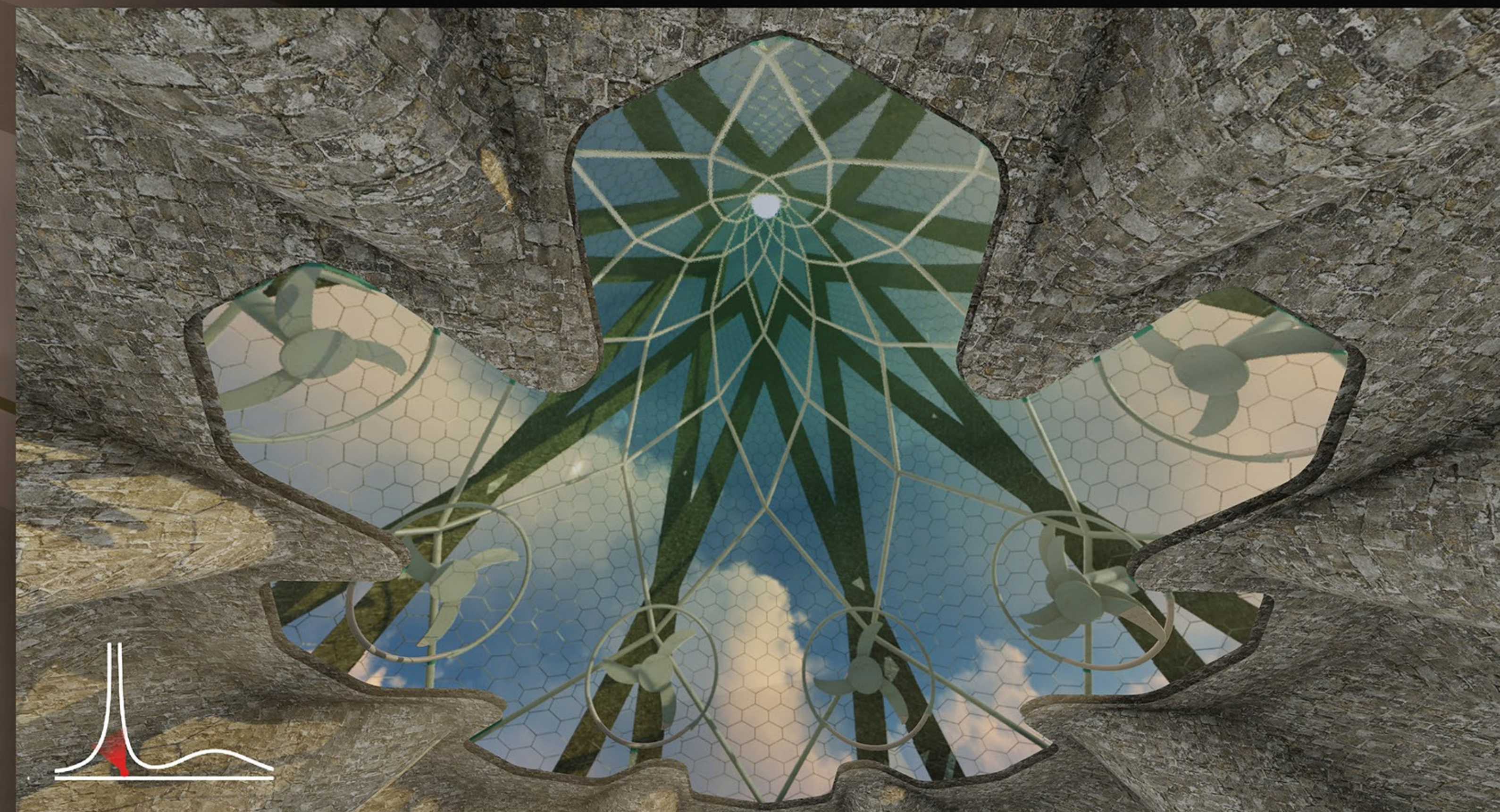


At the ground level, the different dimensions of the project intersect. Past and future. Tradition and technology. Earth and sky. The design seeks to emphasize these connections through the presence, in this layer, of all the different building components.



Looking up through the transparent roof in the main cave it is possible to appreciate the chimney, the turbines and the arabesque vanishing into the sky. In this way the public can have an exciting experience and at the same time gain awareness about the energy generation process.