

Technical Data Sheet:

Nameplate capacity in kWp:
12,000 kWp

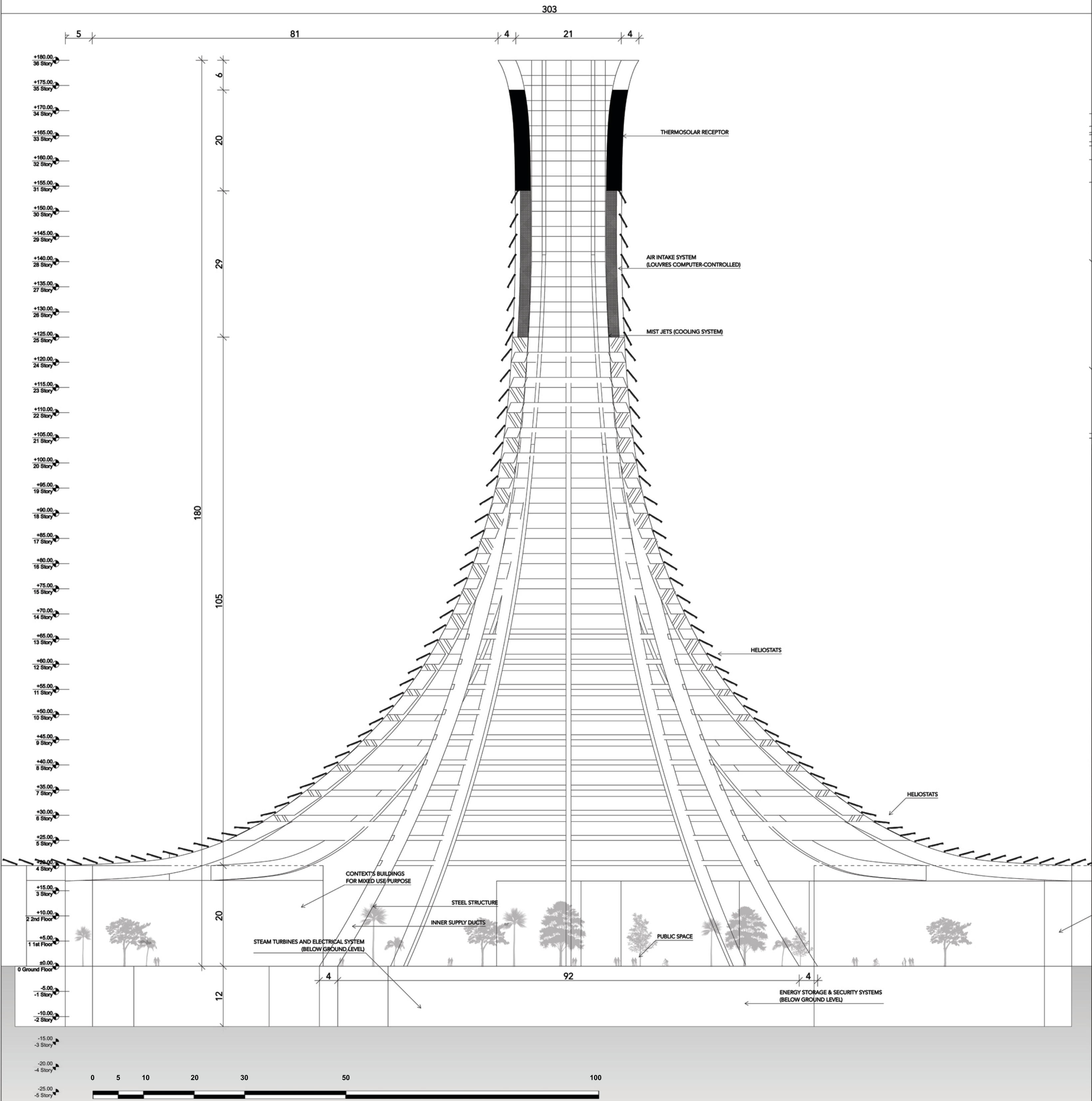
Annual kWh (kilowatt-hours) of energy expected to be generated by the design under average site conditions:
Approximate 60,000,000 kWh.

Conceptual cost estimate:
Estimated Investment = US\$ 280M

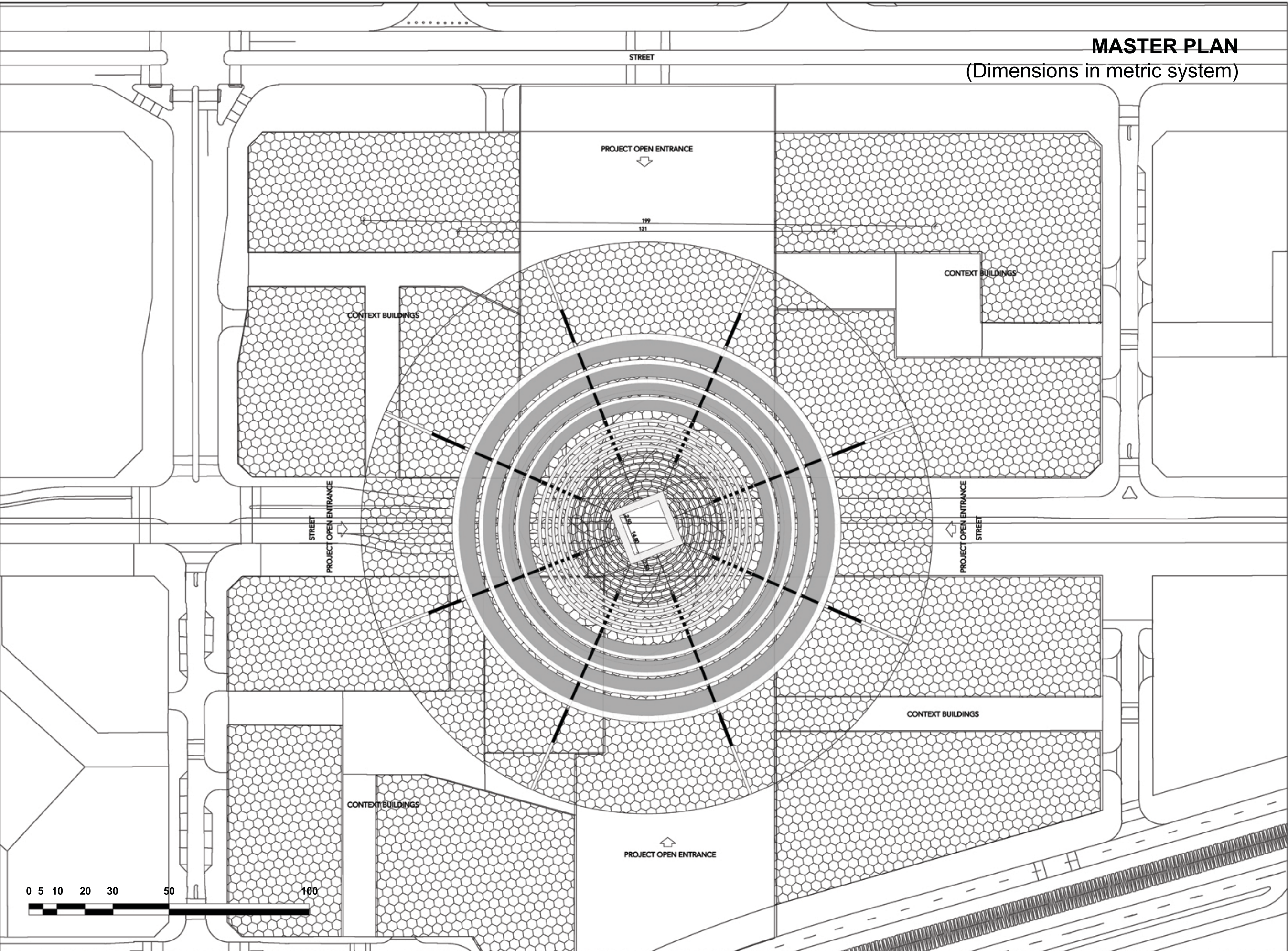
Environmental Impact:

Its environmental impact could be measured considering only a holistic impact. Motor power which powers the whole, Burj Masdar not only made changed the environment, allowing society and species to cohabit and develop under, but also produces energy through the sun. As well as implementing recycled materials and low-carbon-emissions techniques for the construction process. It's expected to reduce CO2 emissions by 20,000 t/year.

SECTION CUT
(Dimensions in metric system)



MASTER PLAN
(Dimensions in metric system)



VIEW FROM BELOW

