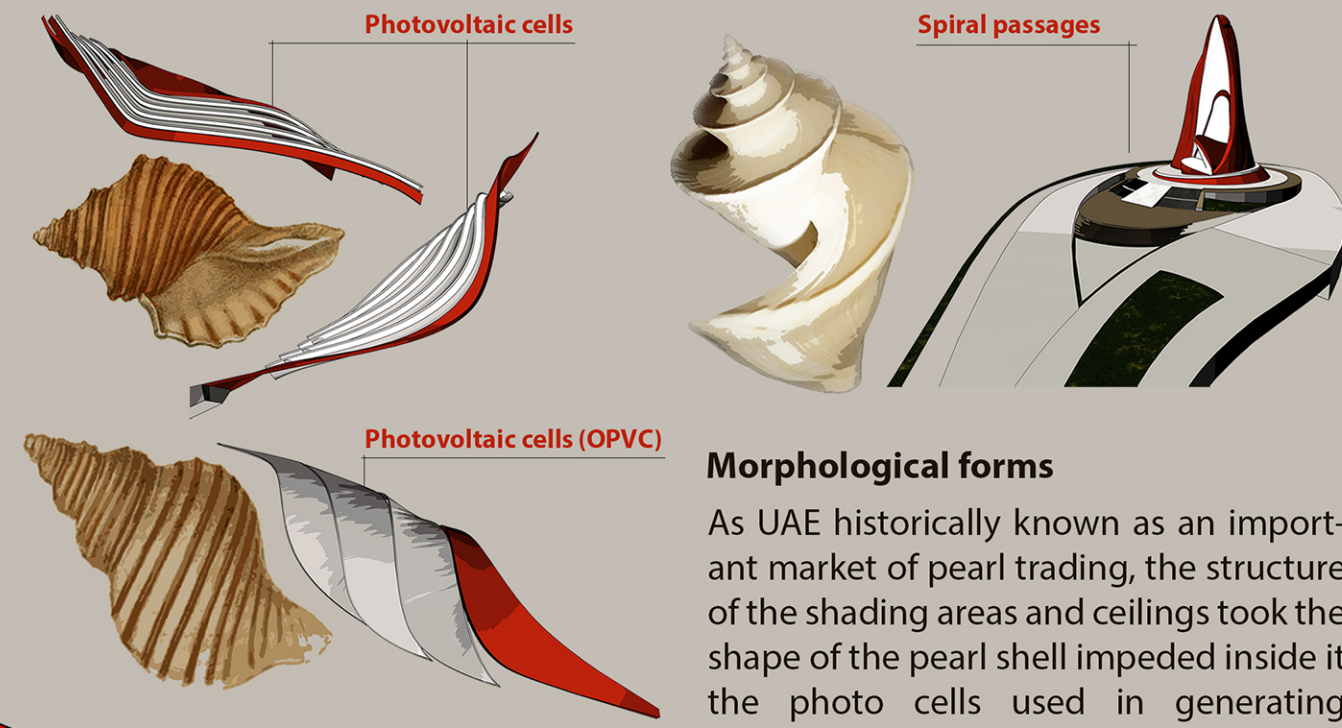
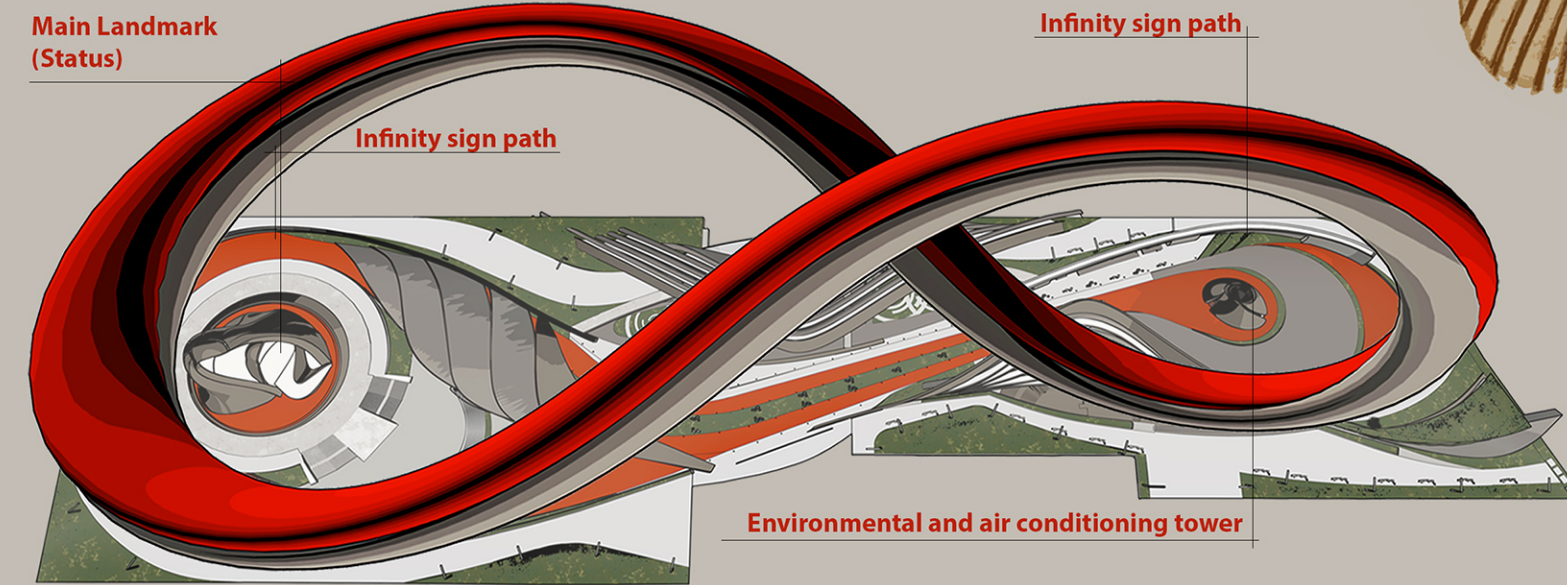


CULTURE AND IDENTITY APPROACH

The culture approach is the main spine of the project overall concept as by transforming a renewable energy generator sculpture and landscaping into an heritage open museum celebrating 50 years of the United Arab of Emirates development. The museum will be shaped first of all as an open space, a multi-functional center reflects the country history and culture, a place to learn more about the community principles and identity features, and above all a place of entertainment for an expanded community. The spatial scheme reflects key elements of the country heritage and combined it with the renewable energy features in a context of modern design forms, also the overall design context reflects the main advantage of renewable energy which is infinity and unlimited safe resources.

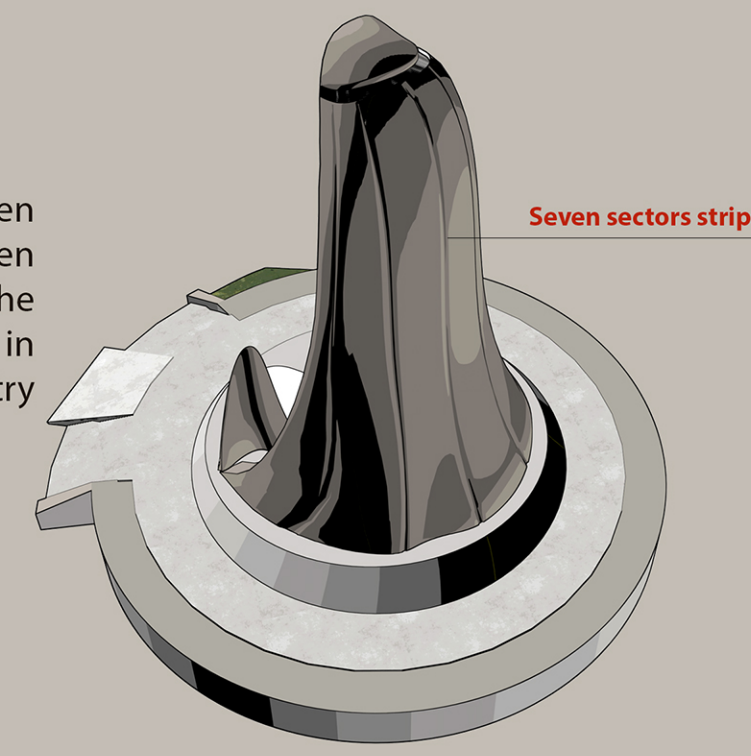


Morphological forms
 As UAE historically known as an important market of pearl trading, the structure of the shading areas and ceilings took the shape of the pearl shell impeded inside it the photo cells used in generating electric power.

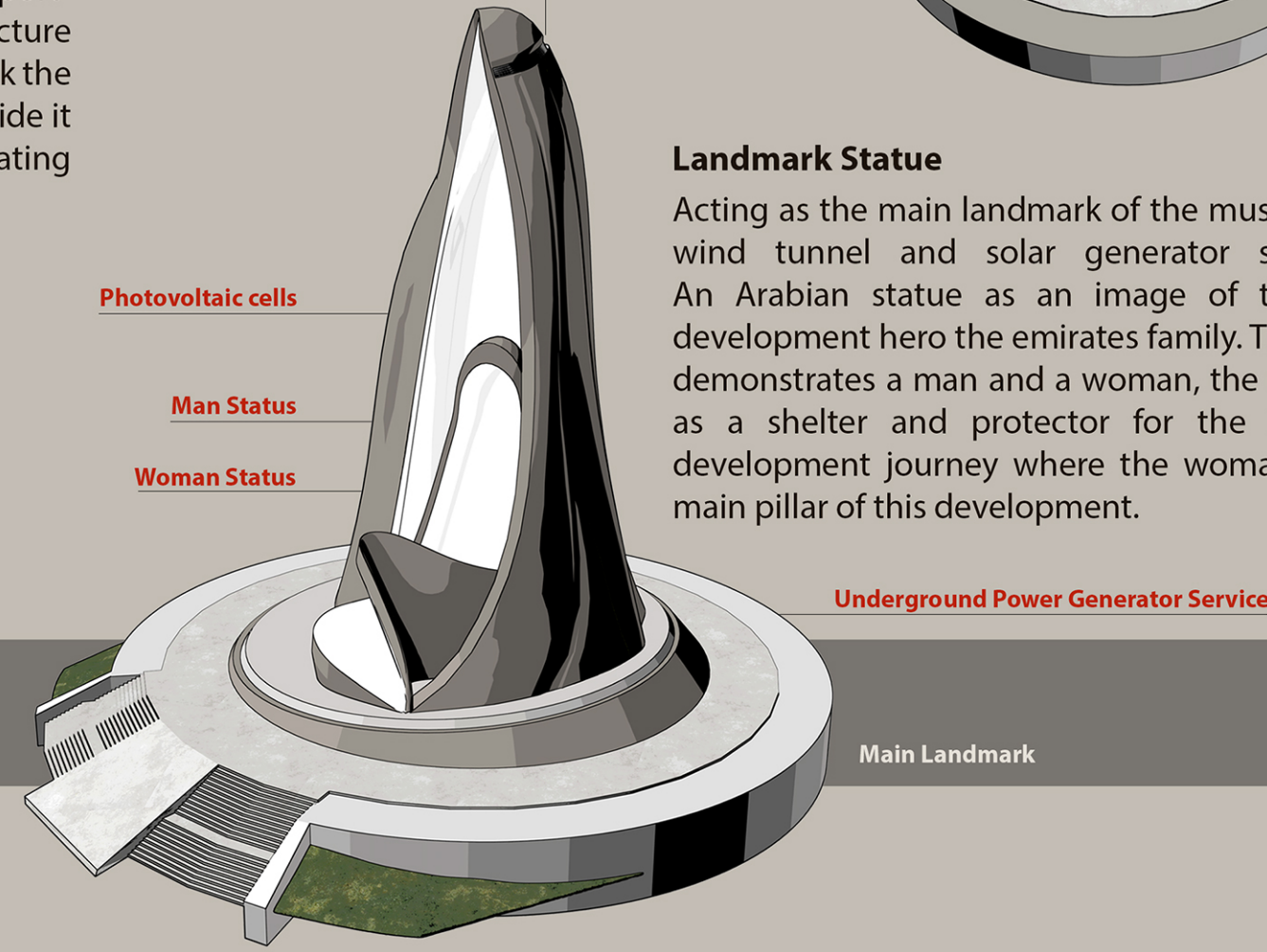
Infinity Concept
 Inspired by the international infinity sign, the layout illustrates the renewable energy fact of being an unlimited resource of power energy, as the design main outline draw the infinity concept with a smooth unbroken border forming the spatial scheme of the museum.

Metaphor

The statue formation consists of seven main sectors as an image of the seven emirates union, together forming the creators of the country evolution in the past 50 years from the country union.



Wind Tunnel Open & Environmental air conditioning



Landmark Statue

Acting as the main landmark of the museum, the wind tunnel and solar generator sculpture, An Arabian statue as an image of the main development hero the emirates family. The statue demonstrates a man and a woman, the man acts as a shelter and protector for the historical development journey where the woman as the main pillar of this development.

