

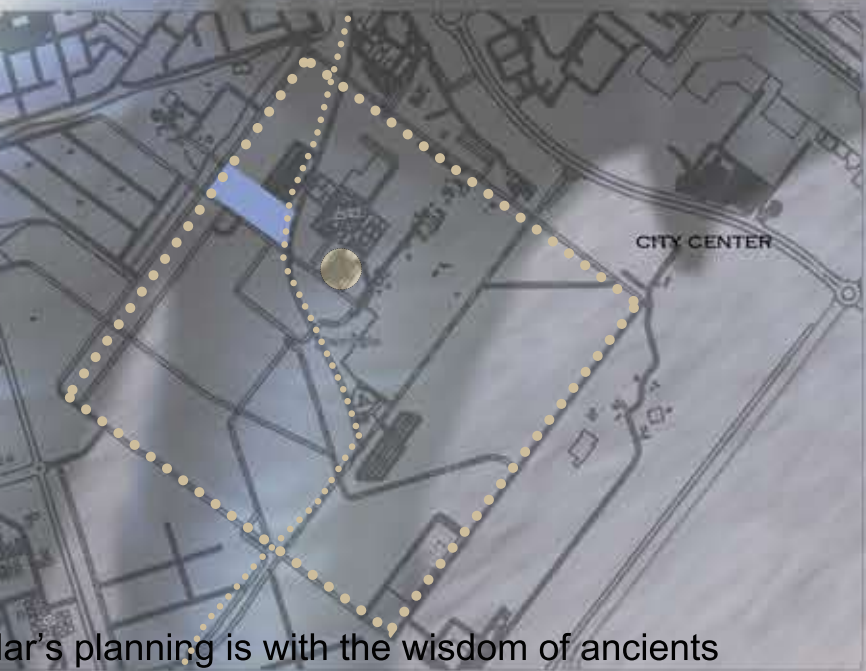
THE GUIDENCE OF THE WIND

CROSSING PARK +VORTEX FORMATION

While creating energy, this site should be the gateway to MASDAR City and the open space that can produce a variety of activities; on this basis, the characteristics of the vortex-free wind turbine generator are borrowed to form around it. Rotating semi-arc wall, so that different seasons of wind can pass through to maximize the formation of eddy currents to generate electricity, while the form of the wall can be fluttered with the wind, each unit is equipped with a pressure sensor, and can be based on the outside world Stress and crowd interaction provide electricity and release light at night.



SITE ANALYSIS



Madar's planning is with the wisdom of ancients



Typical Arab urban texture with high wall which can cooling street,forming the shadow



WALL

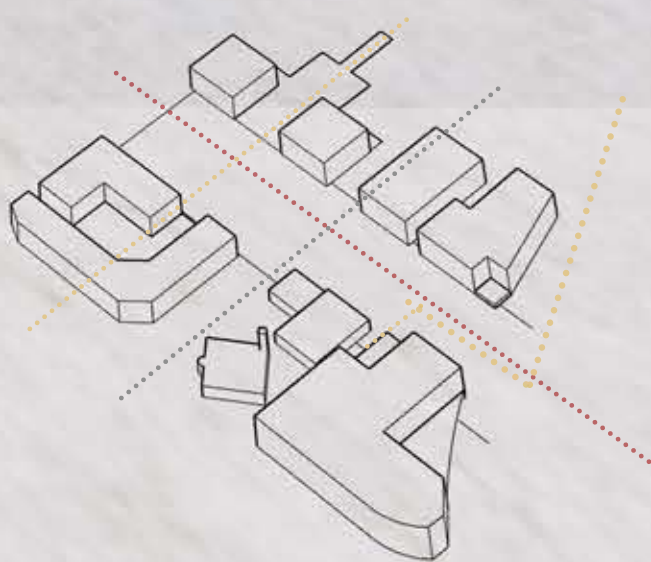


Enclosed Space

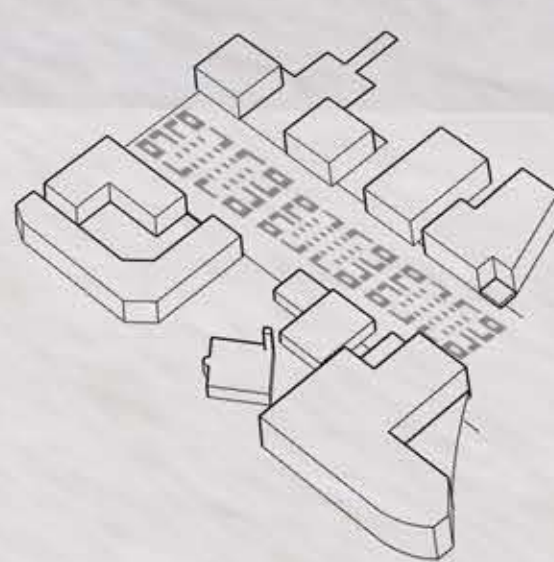


Extracted texture elements

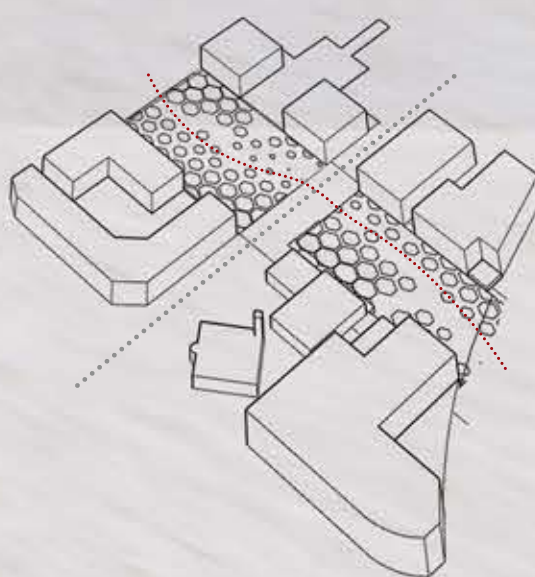
PLANE FORMATION



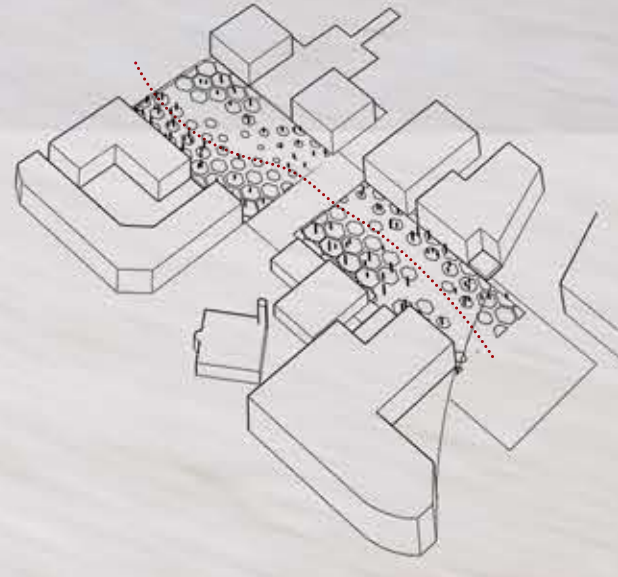
Connective path



Use enclosed space with wall



Item defined as circle &Interfered by path



Set the generator according to wind power&wind direction