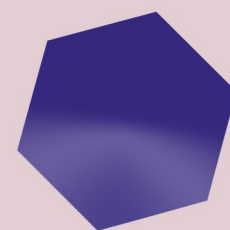
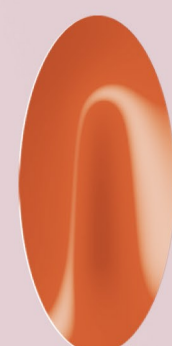
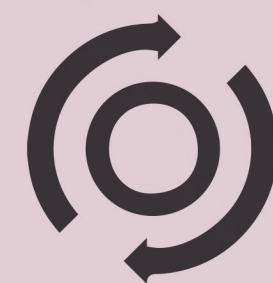
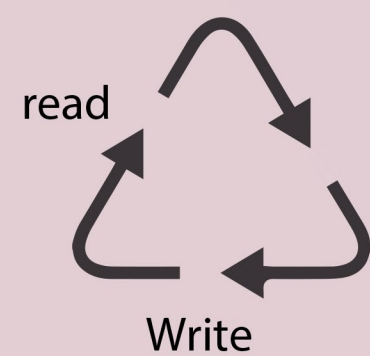
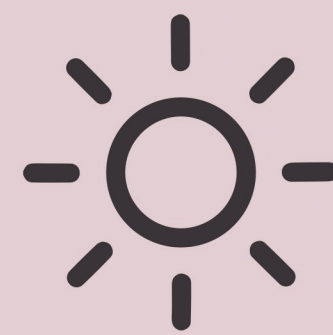


# Amber Farm



Amber

Solar Panel

Motion

This project consists of three main design concepts:

- Sunflowers are sensitive to radiation of sunlight and During growth, they tilt during the day to face the sun.
- Human has used writing technology to store their knowledge during the history. Amber is fossilized tree resin, which has been appreciated for its color and natural beauty since Neolithic times. Therefore, Amber can be a symbol of maintaining small fingerprints of the nature. Due to the fascinating properties, human also has used Amber as a mummification. In this project, we used Amber as a mummification of energy.
- Throughout history human has used resources for his needs. This time, we wanted to reverse this process to generate energy feeding the nature.