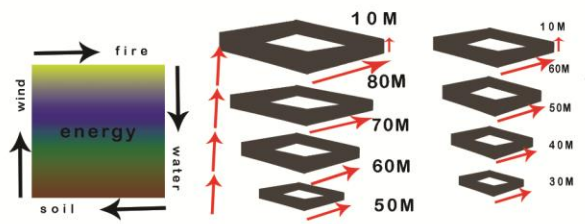


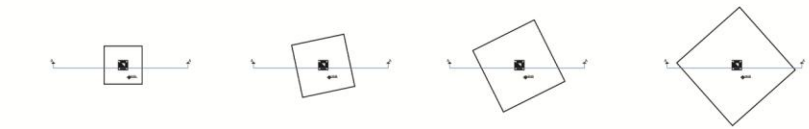
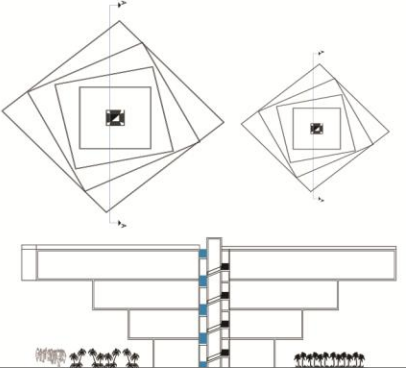


The symbol of a city in Germany is symbolic that introduces the main branch of intended place which express the property and happenings in the city the combinatorial sign is very architectural because it had been used the reason of designing this symbol is that to show the properties of the city in the symbol. according to the general plan of the city, we were looking for the form that express the whole city and also the happenings show the development of technology and science and also architecture in this city.



according to the general plan of the city, we were looking for the form that express the whole city and also the happenings show the development of technology and science and also architecture in this city it has 4 sides that shows 4 natural ele-

two little squares that shaped white the whole city plan and the intended website that passes a street straight between them. vary from each other we consider 2 different architectural ways. the reason of designing this symbol was to reach the little forms to big forms to express the step by step development of the science and technology in this city. so we formed the buildings from the square from to the rotational and evolutionary across the sky



two little squares that shaped white the whole city plan and the intended website that passes a street straight between them. vary from each other we consider 2 different architectural ways. the reason of designing this symbol was to reach the little forms to big forms to express the step by step development of the sci-



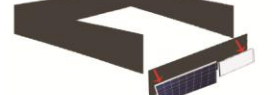
also architecture in this city. according to this and the website, we decided to get help from the cities plan which is shaped whit two little and big square. accordingly, the square from has unique properties



so we formed the buildings from the square from to the rotational and evolutionary across the sky to express that energies will be back to

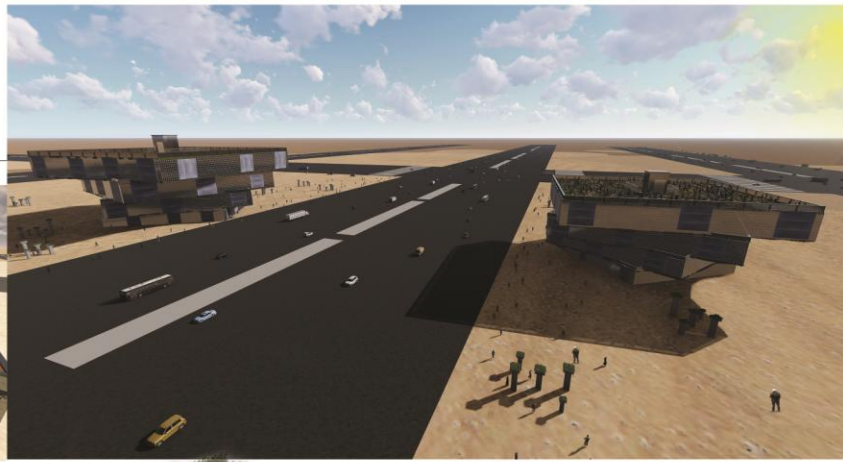


when passing through the streets cars pass through a high rise stairs that are evolutionary wing



While the act of photosynthesis, they clean up the water too. They clear the used water because the water is very significant in the city. So clean up the water with the symbol can be very important to reach the goals. In each building, there is an elevator for the people who are interested in flowers. They can enter to the floors and enjoy the view. In designing this symbol we used solar panels and also the window that enter the sunlight in the buildings for the flowers. Saving the power in this building the green sides and architecture in this city can be very exciting and it helps the view of the city

According to the ruling conditions to this collection that produces clean energy and prevent producing greenhouse gasses and other harmful gasses which damage the environment. We use green architecture for preparing these green sides, we used plants because they absorb sunlight very well. In the buildings between the plants, we used batteries



Outside of the building, we used a special kind of soil which is identified and collected from different parts of Italy that with the micro organism of this soil, they have the ability to produce the electricity and power. using the batteries around the plants saved 70 per of energy and boosts the electricity. Each 15 cubic meter has the ability to light a computer. it means that with using bug fixes such as algae or cyanobacteria the plants transfer the chemical energy to the electrical energy. The tools are movable and don't need energy to move. Producing electricity is with a device which an Iranian scientist invented

