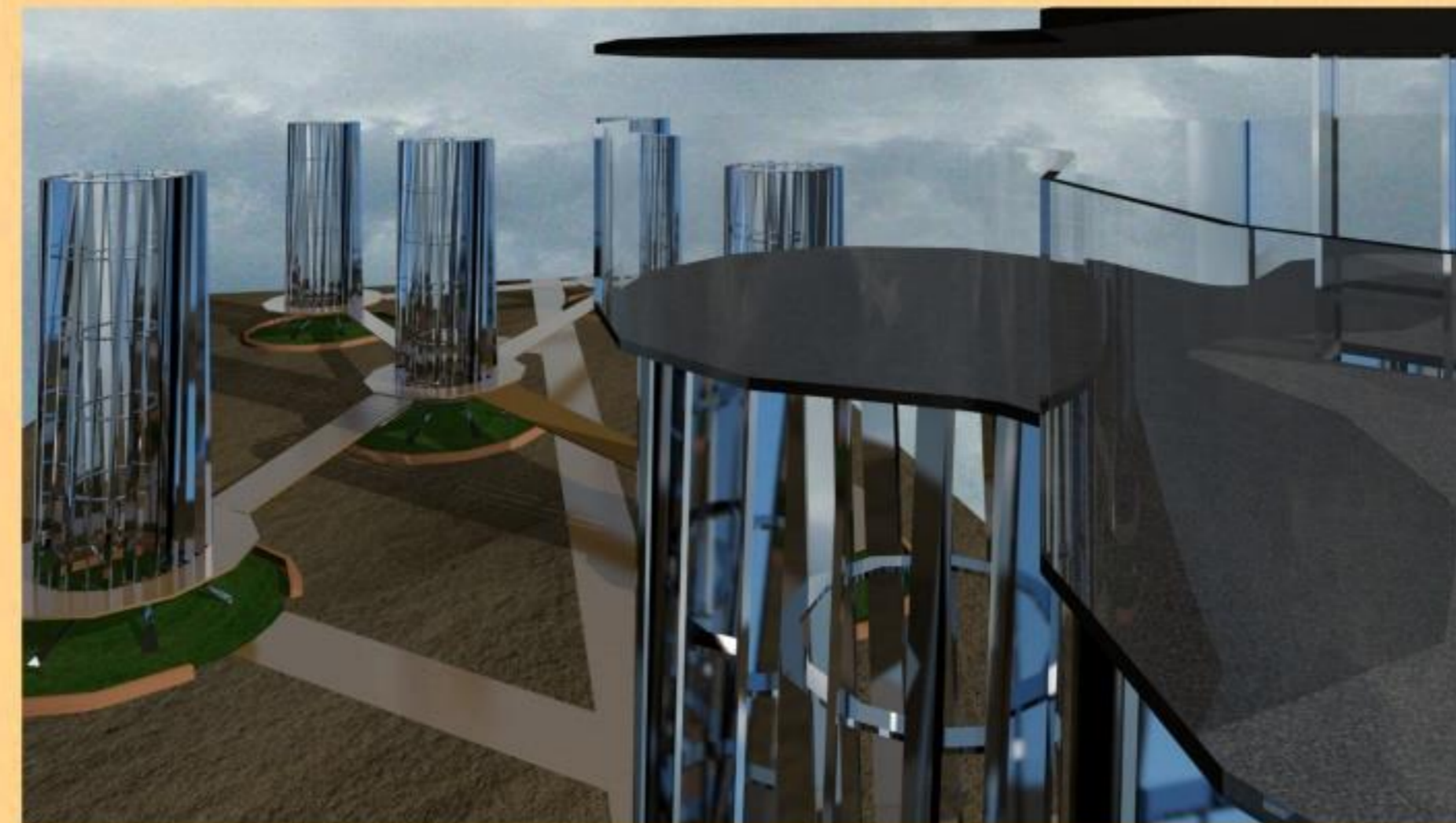


DIFFERENT LEVELS REPRESENTATION

EACH SMALL MODULE HAS A OPEN SPACE WITH VEGETATION THAT PERMIT VIEWING ALL THE COMPLEX AS WELL AS THE PRESENCE OF THE CENTRAL THREE-MODULE-TOWERS THAT SEEKS BE A REPRESENTATIVE PUBLIC PACE FOR PRESENTATIONS OR ART EXPOSITION.



LOOK UP TOWER

IT HAS UNDERGROUND EXPOSITION SPACES, BATHROOMS, AND ENERGY MACHINERY ROOMS. ALSO DIFFERENT LEVELS OF STANDS, UPPER SIDEWALKS AND A LOOKOUT SPACE ON THE TOP OF THE THREE-MODULE-TOWER THAT PERMIT EACH VISITOR TO CONTEMPLATE THE DESIGN FROM DIFFERENT PERSPECTIVES.



CENTRAL PUBLIC SPACE

THE COMPLEX LOOKS UP TO BECOME AN ICONIC MASDAR ELEMENT. A REFLECT OF ITS CULTURE, APROPIATION AND INTEGRATION OF THE TRADITIONS AND COMMON USE OF THE SPACE WILL BE ESSENTIAL FOR THIS KIND OF PROJECTS.

3



SECONDARY TOWERS ALONG THE SITE PATH

CENTRAL PUBLIC SPACE WITH MAIN PLAZA

SECONDARY TOWERS ALONG THE SITE PATH

ACCESS

ACCESS

SITE AXONOMETRIC

THE SITE NOT ONLY RESPONDS AS A COMMUNICATION PATH BETWEEN THE SURROUNDING SPACES ON THE ZONE (THE PUBLIC OPEN SPACES BETWEEN AND THE HABITATION AREAS) BUT ALSO CONNECTS ALL THE TOWERS TO CONCENTRATE THE PRODUCED ENERGY WITH THE CENTRAL AREA WHERE THE ENERGY PATH FINISHES.

THE IDEA IS TO TEACH EVERY PERSON THE FUNCTIONING OF THE SYSTEM AND HOW IT CONTRIBUTES TO THE CITY'S ENERGY SUPPLY. WE STRONGLY BELIEVE THAT PERSONS WILL VALORATE MORE WHAT THEY REALLY KNOW, IN THIS OCATION THE METHOD OF GETTING ENERGY FROM THE WIND.