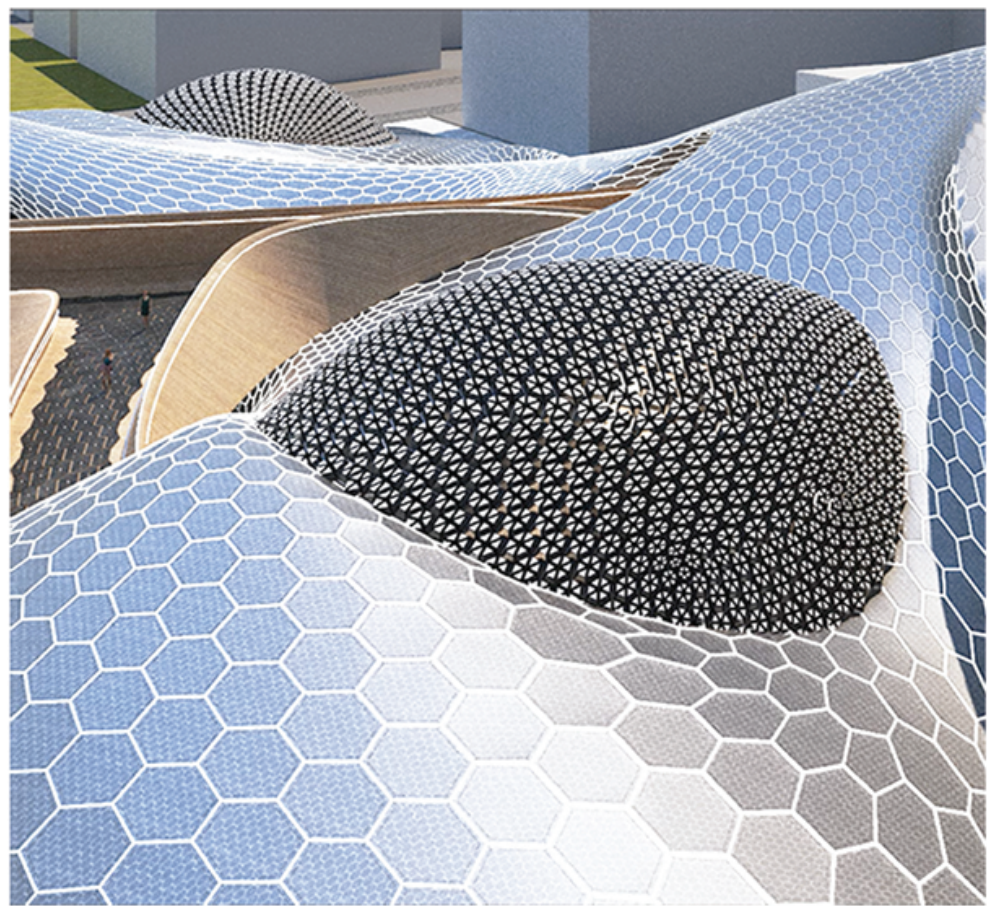
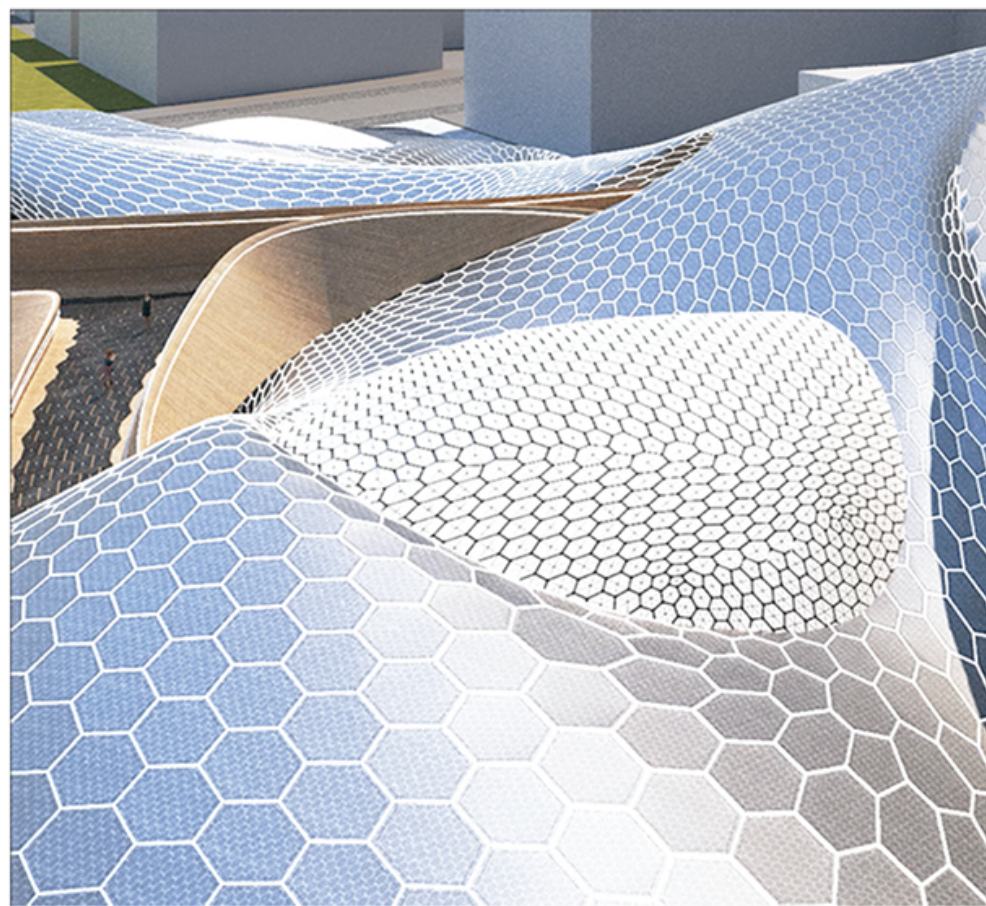


# The PULSE... Innovation & Impact

## INNOVATIVE DYNAMIC PV STRUCTURE

The PULSE creates a spectacular opportunity for innovation of PV modules industry. The design climax presents an outstanding element, which imitates a breathing rhythm; this employs the use of pulsating geometrical solar modules fixed on a steel frame. The purpose of innovative and dynamic PV structure is to increase the production of power by expanding the surface through applying automated mechanism programmed to track down the movement of the sun with different seasons along the year.

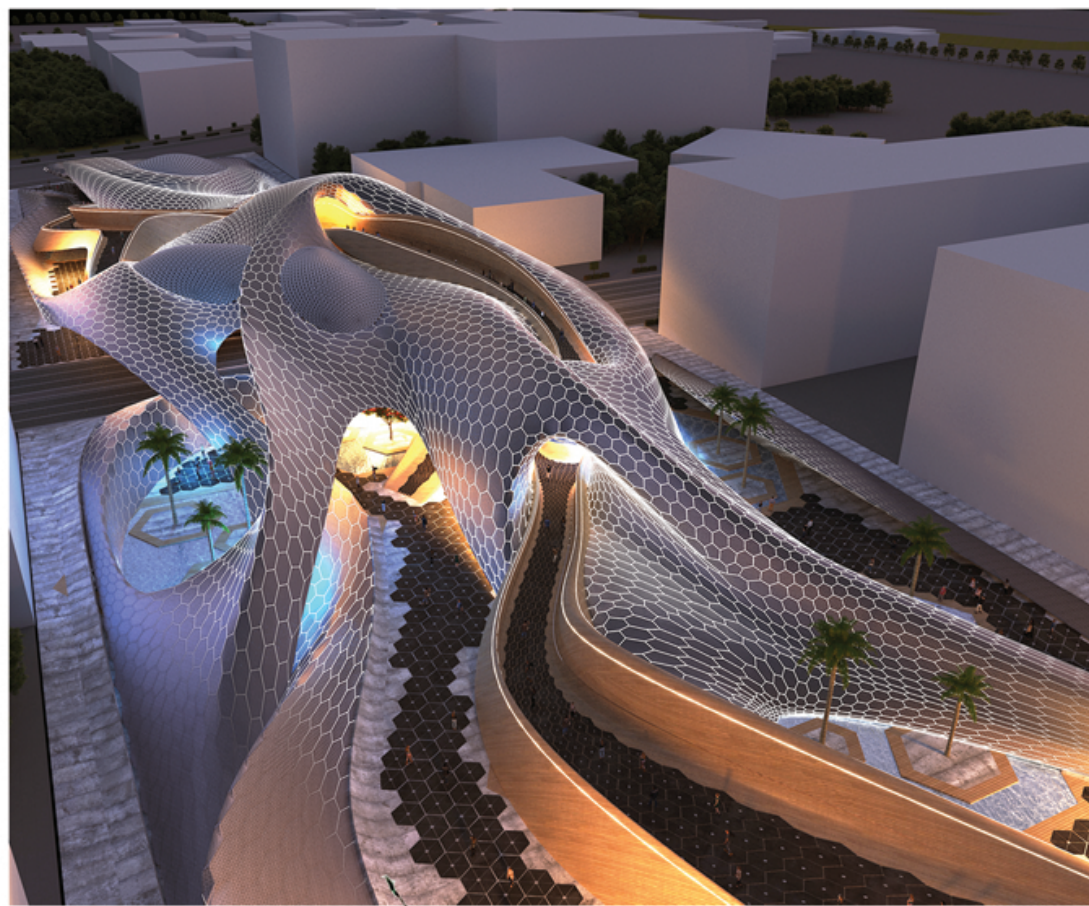
The concept truly breathes life into the elegant, complex structure and leaves a deep impression on any individual who sees such effect, as it creates a more distinct, personal connection.



BEGINING & END OF THE DAY

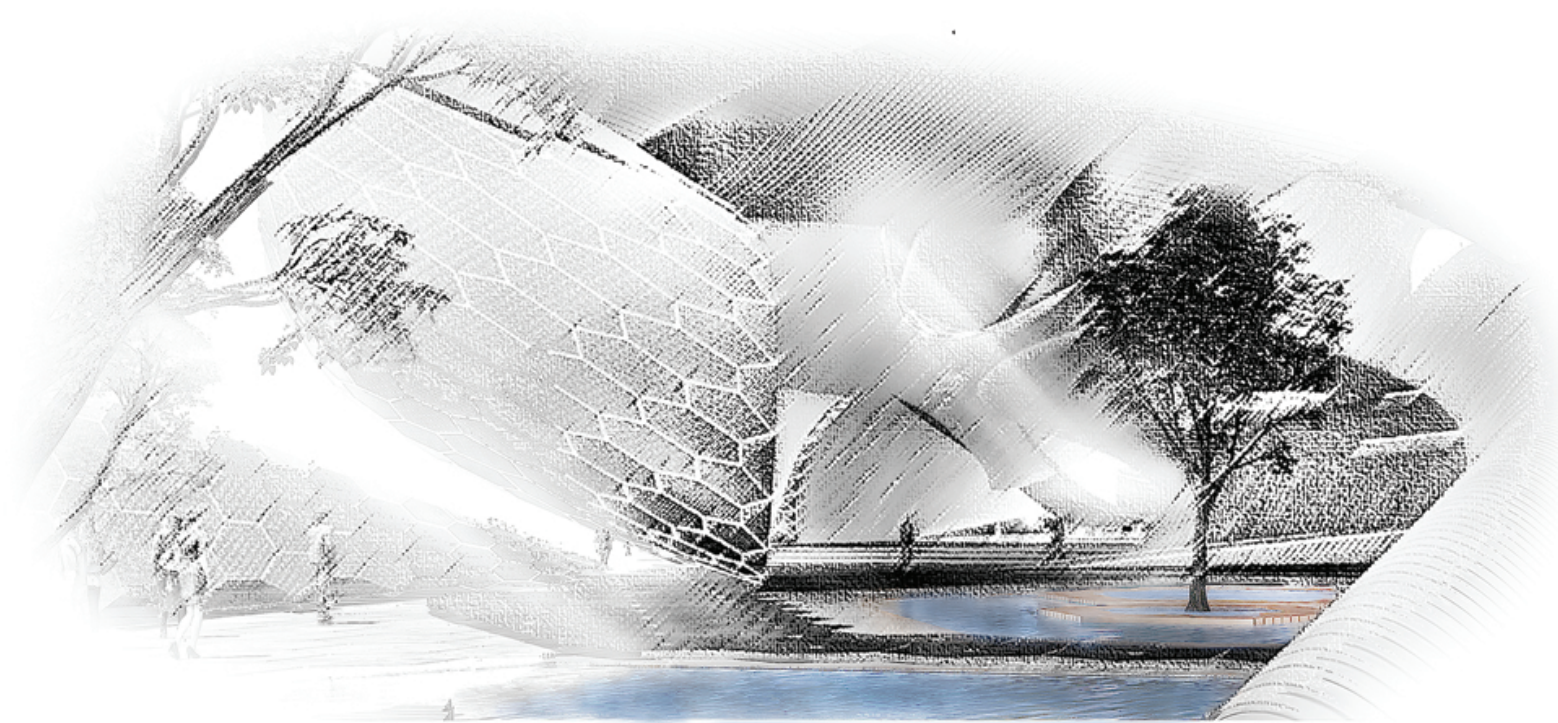
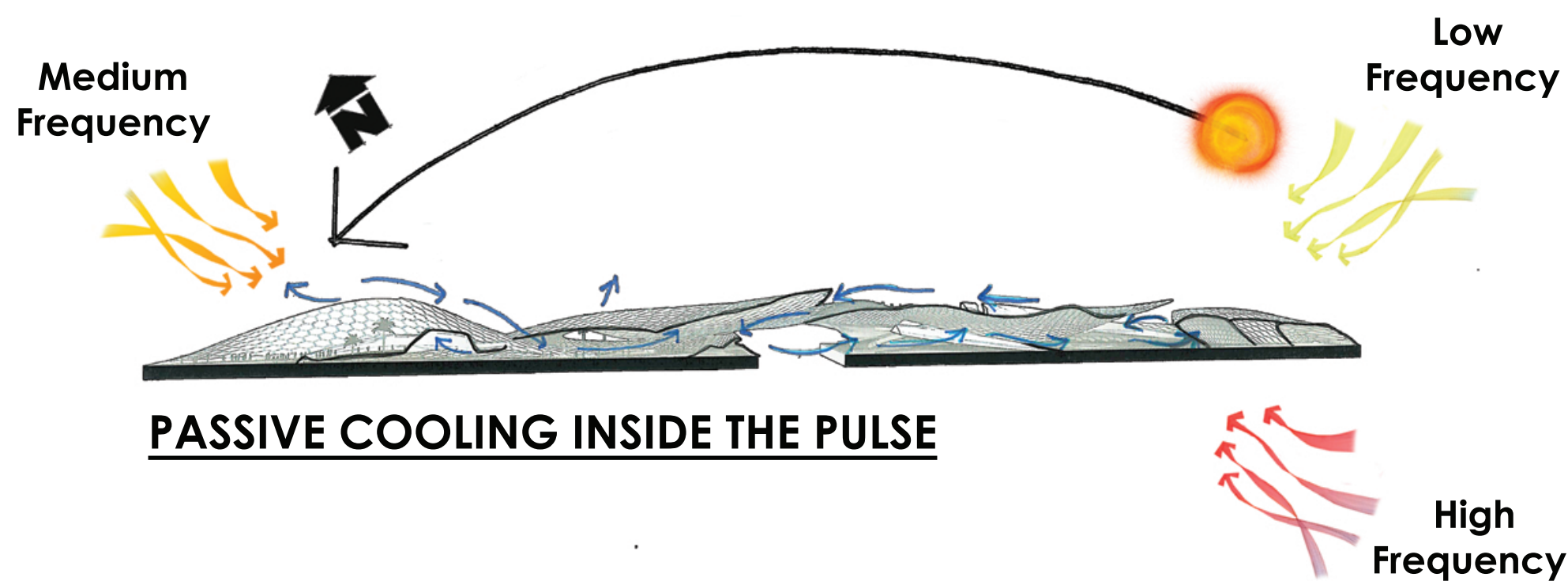
## BRIDGE AND PLAZA

The open plazas beneath that provide gathering spaces for people incorporate human movement and local circulation as parts of the design itself. Not to mention, the area welcomes all visitors, as it is even accessible to people of determination, through the aforementioned bridge. The wooden bridge provides a raw feeling of nature while promoting stronger preservation of the environment by emphasising on the value of reusable, natural resources.



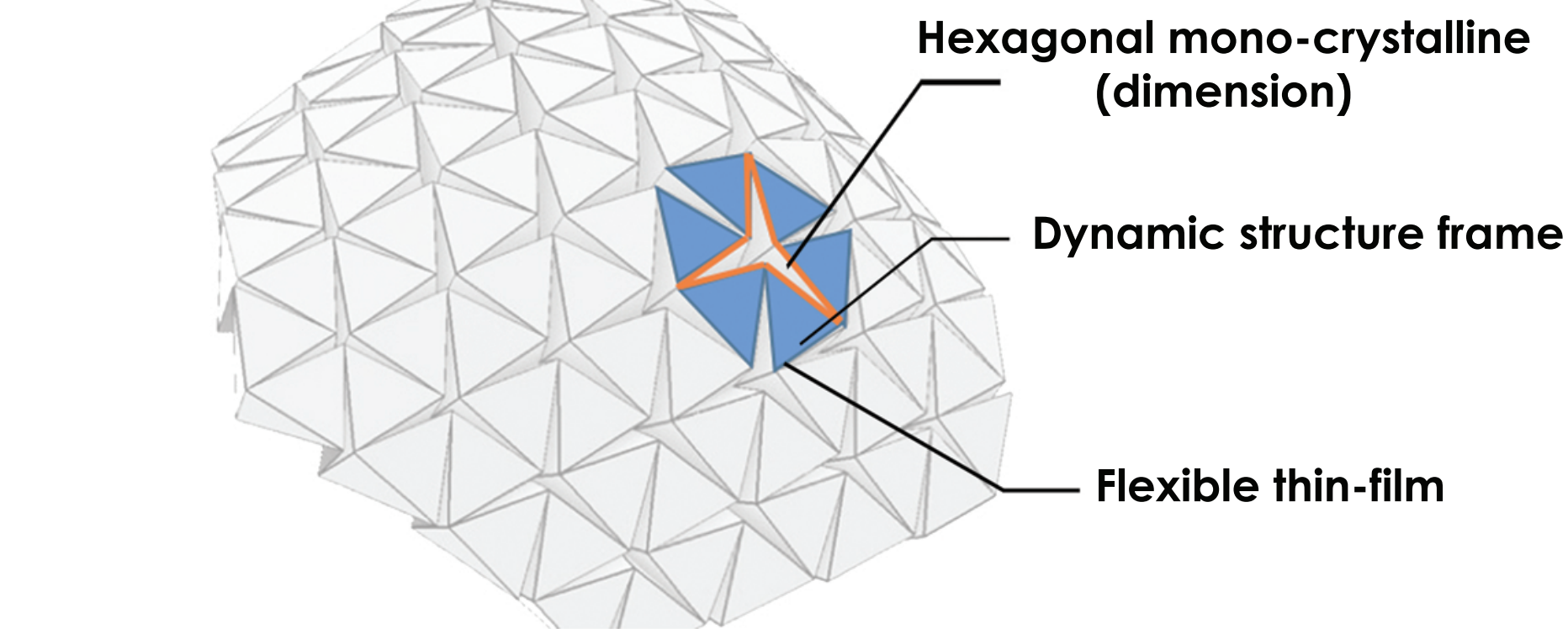
## VENTILATION

Landscaped waterbodies assist a passive cooling technique underneath the structure, as when air passes through, a crisp and refreshing circulation of wind spreads throughout the building

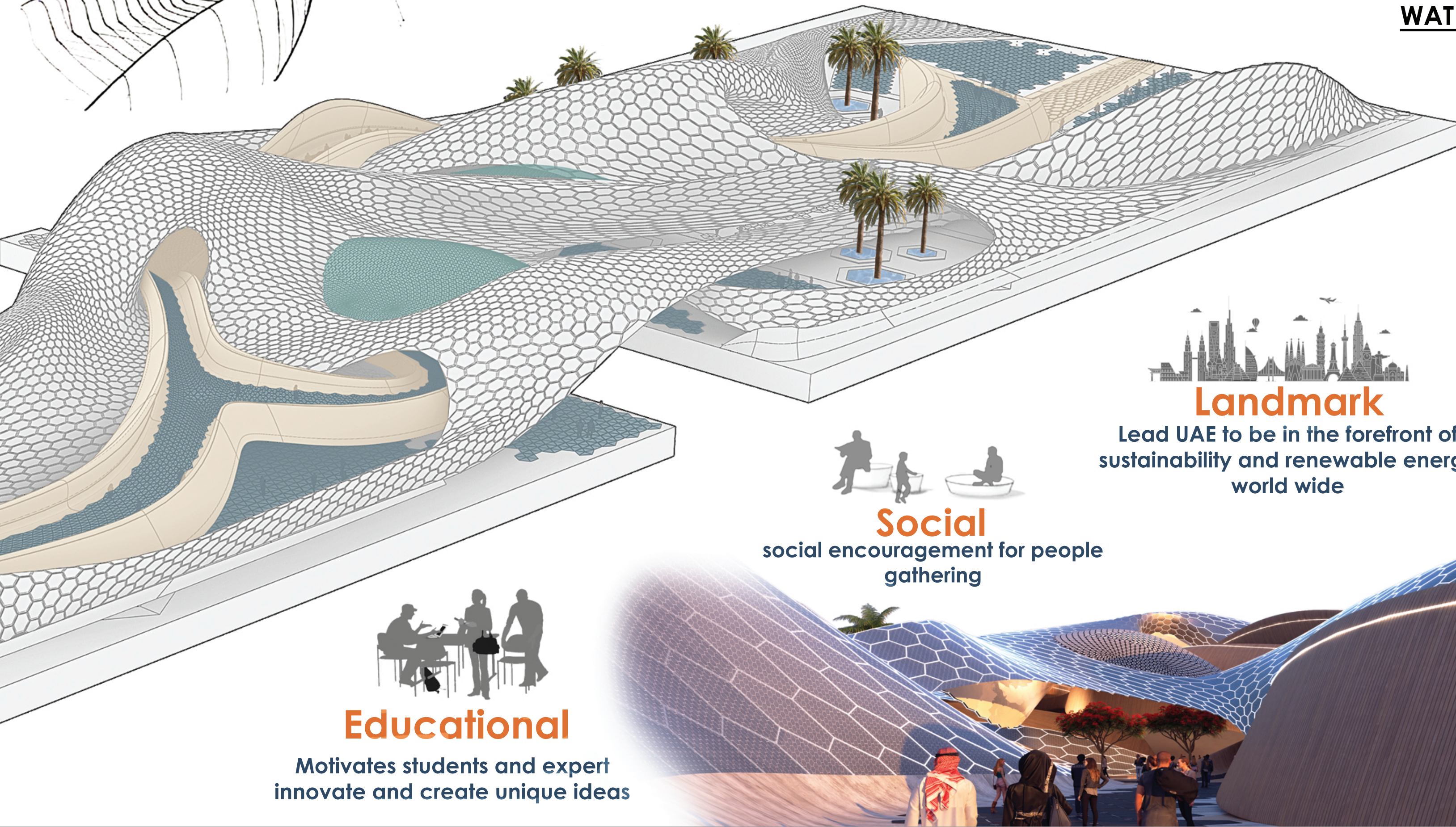
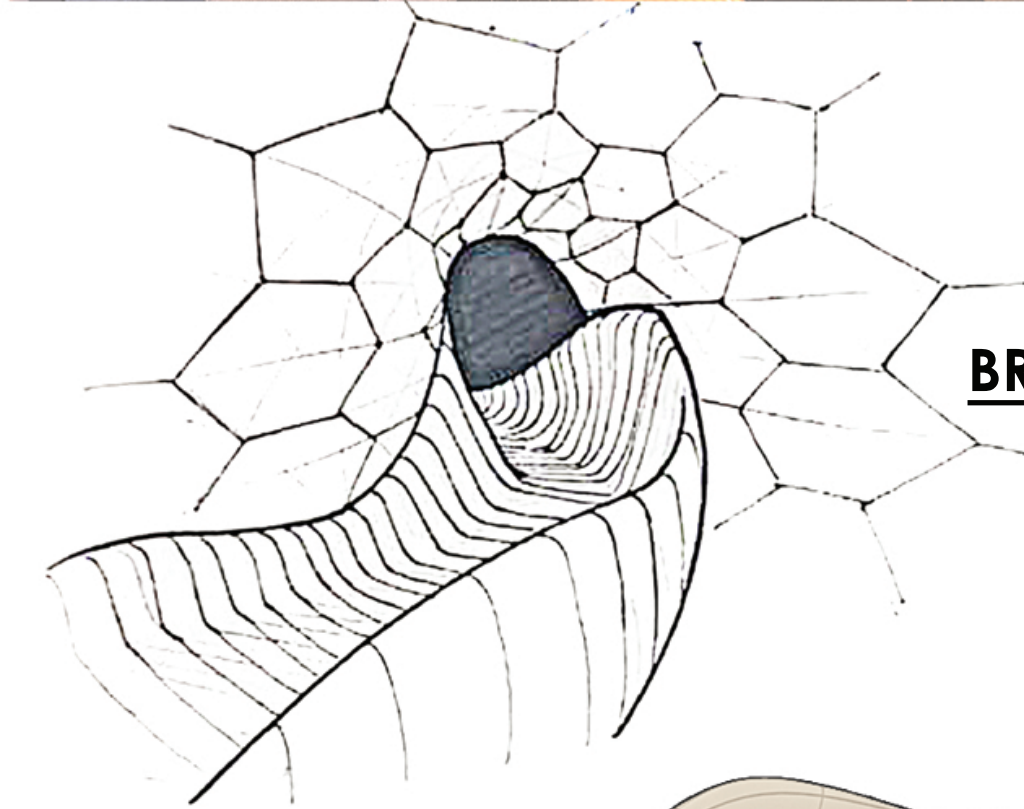


WATER SURFACE

BRIDGE VIEW INSIDE THE PULSE



SCHEMATIC DUAGRAM FOR PV BREATHING UNIT



## Environment

Reducing the carbon footprint due to the implementation of renewable energy



## Landmark

Lead UAE to be in the forefront of sustainability and renewable energy world wide



## Social

social encouragement for people gathering



## Educational

Motivates students and expert innovate and create unique ideas

