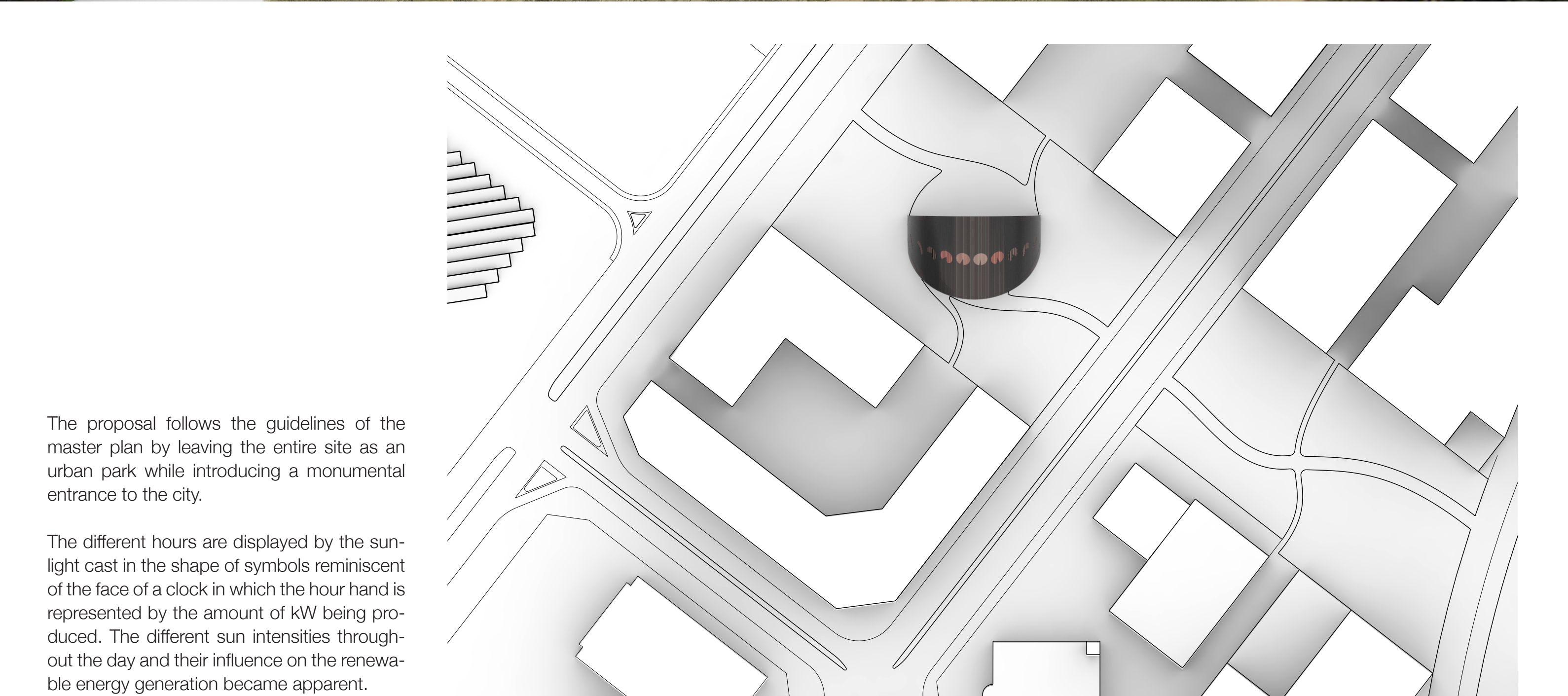
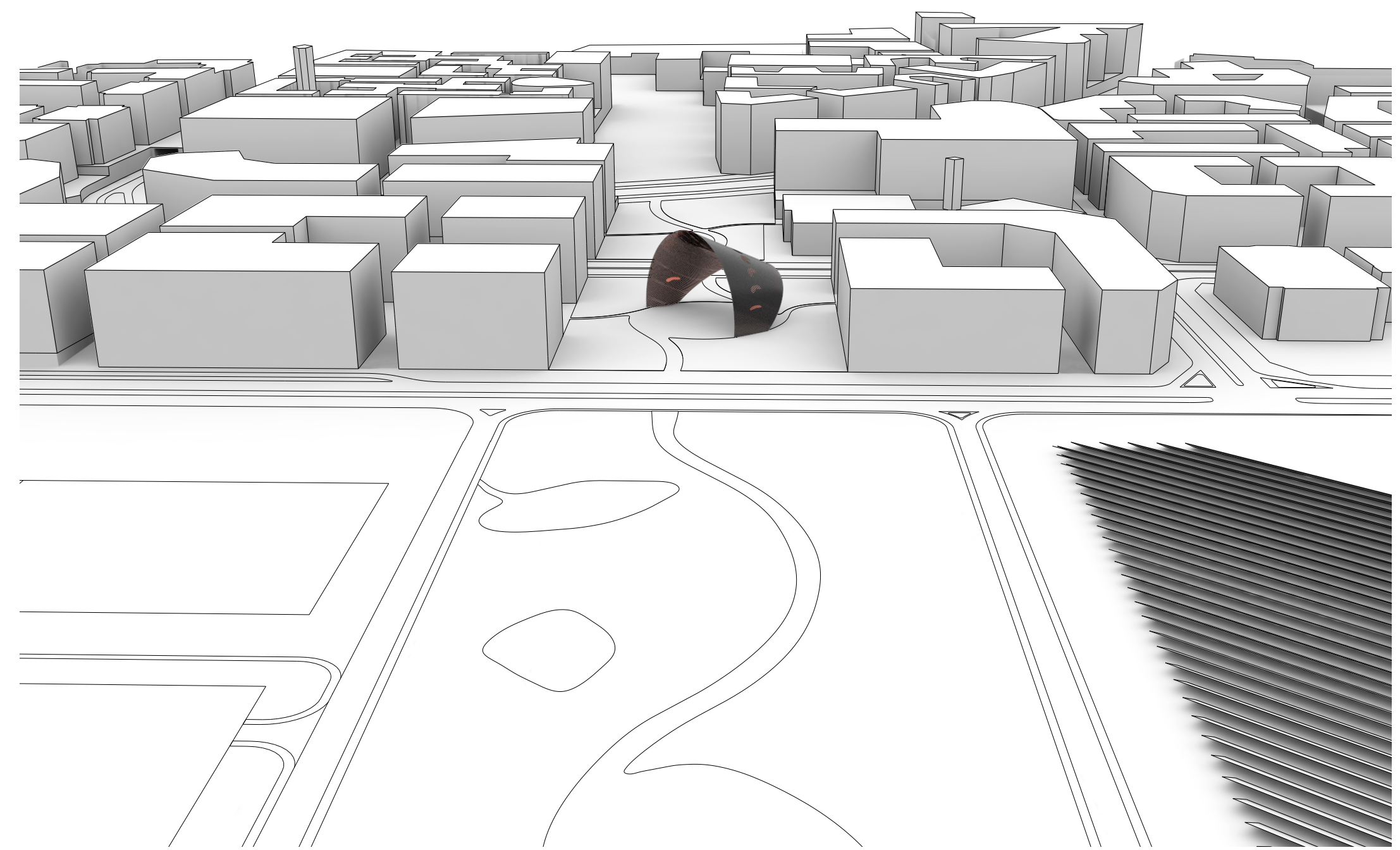


Diurnal shadow

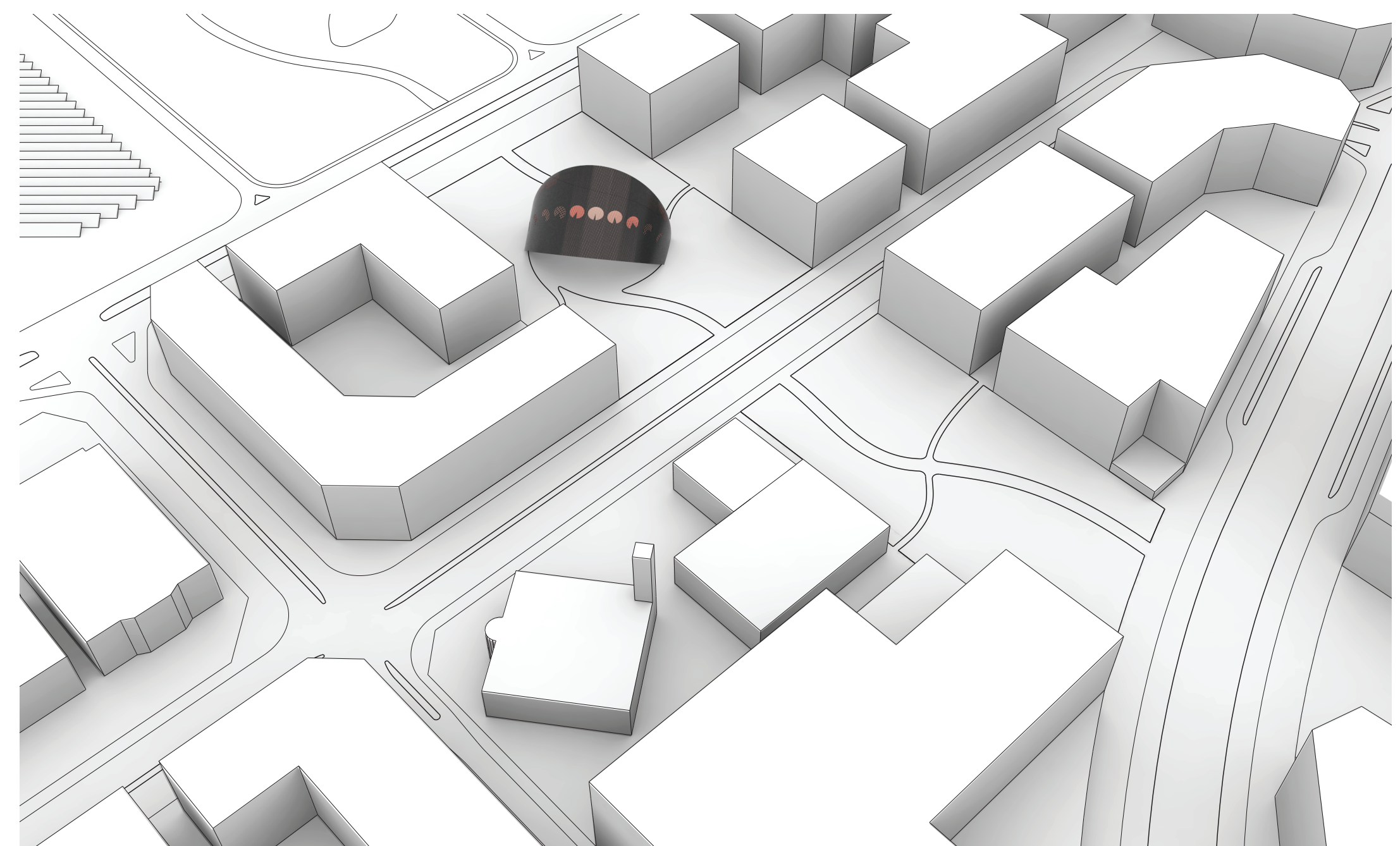
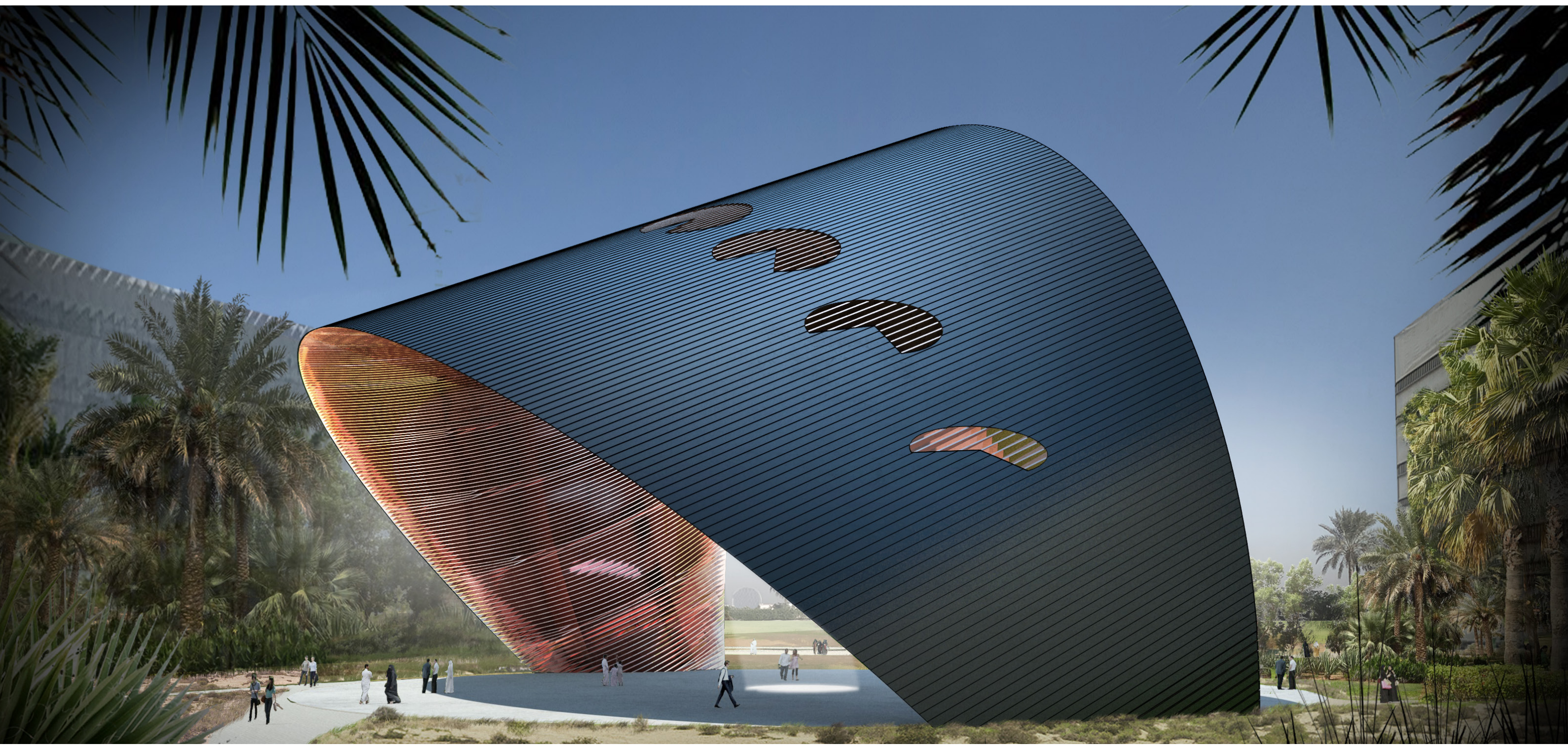
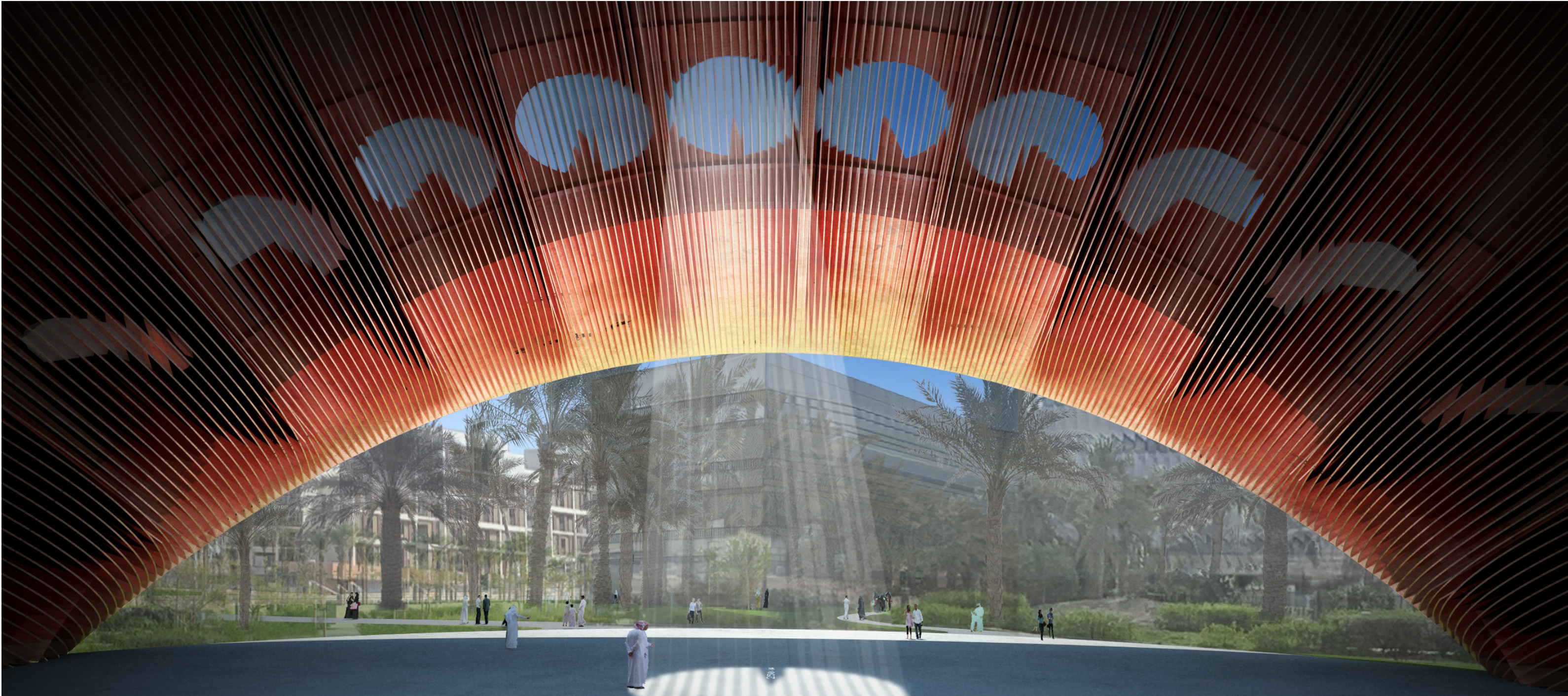
Artwork in context

An arch understood as the archetypal shape of a gate gently leans towards the sun and provides indispensable shadows for the people of Masdar in its exceptionally sunny weather. Diurnal shadow focuses on the relationship between the amount of renewable energy generated and the time of the day. It displays them on the publicly accessible ground shaded by the artwork. By using the diurnal motion of the sun as a medium to link time and renewable energy generation Diurnal shadow makes viewers aware of the production of energy in an intuitive and playful way.



The proposal follows the guidelines of the master plan by leaving the entire site as an urban park while introducing a monumental entrance to the city.

The different hours are displayed by the sun-light cast in the shape of symbols reminiscent of the face of a clock in which the hour hand is represented by the amount of kW being produced. The different sun intensities throughout the day and their influence on the renewable energy generation became apparent.



While tracing the path of the sun, the overall form is reminiscent of an arch. This feature is meant to emphasize the function of the artwork as a gate to the city of Masdar. Diurnal shadow is both a monumental passage and a place to linger and experience.