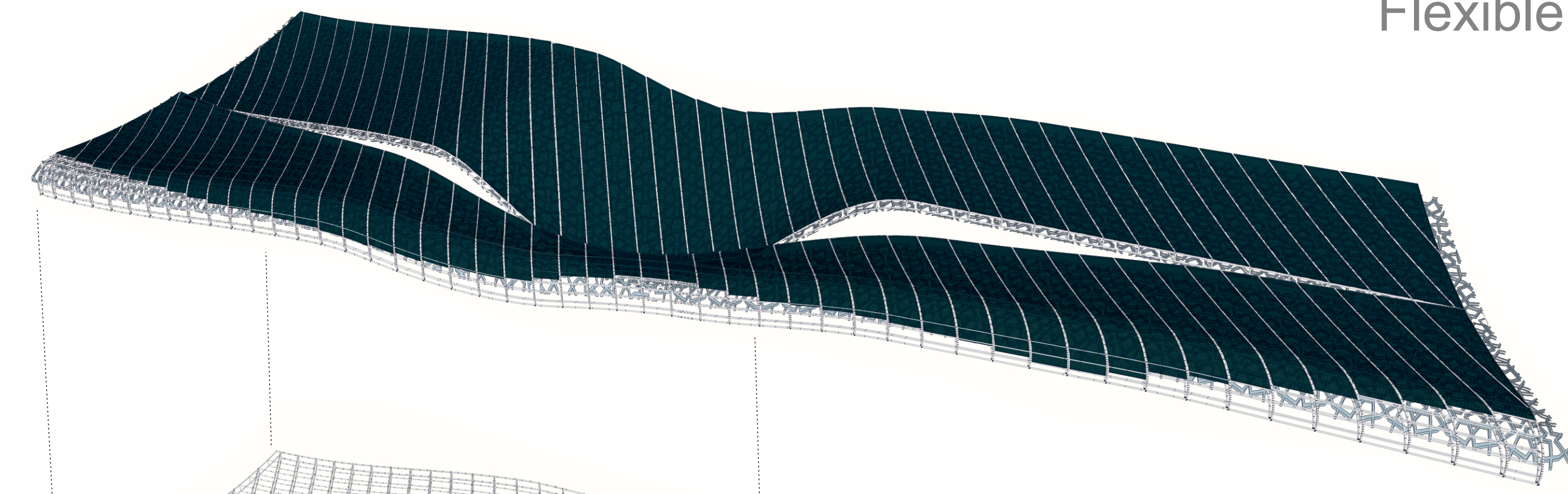


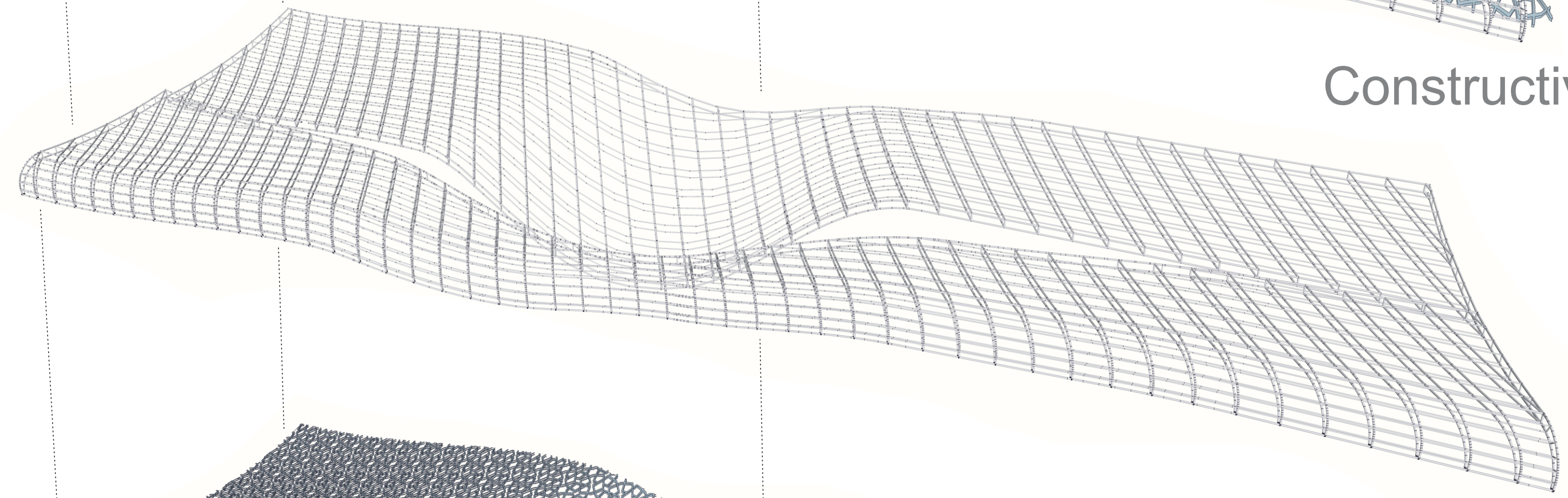
Flexible Solar PV Modules



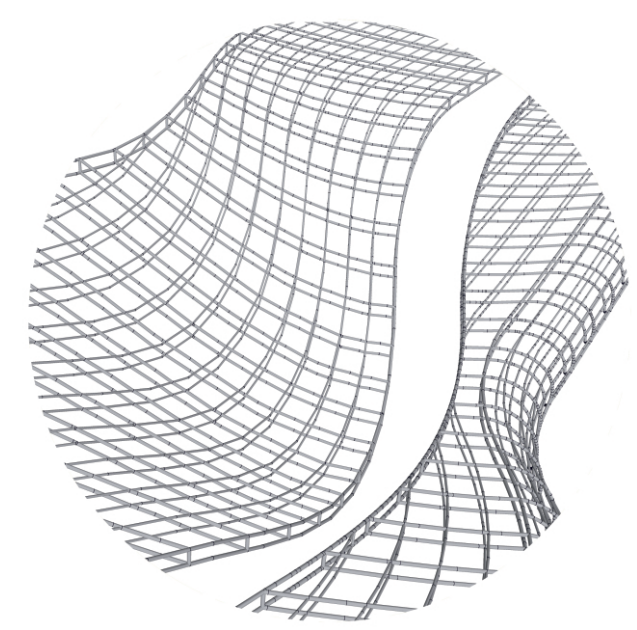
The World's first FLAT Solar Panel.

eArche is a super flexible and ultra-thin solar panel that can be stretched along any exterior. Its applications include but are not limited to buildings facades, automobile mobile roofs and mobile power station. The product is made with composite material and 70% lighter than conventional solar panels, making it far less costly to transport and install. Solar Panel Size of 1.96 meters x 0.99 meters. Power rating 315-320 W. Poly (6 inches) 1.94 m² per panel. Total Surface Area: 20900 m². This total surface area provided by the canopy can then be divided through by that of the 10700 solar panels. Solar springs generates 5361 MWh annually.

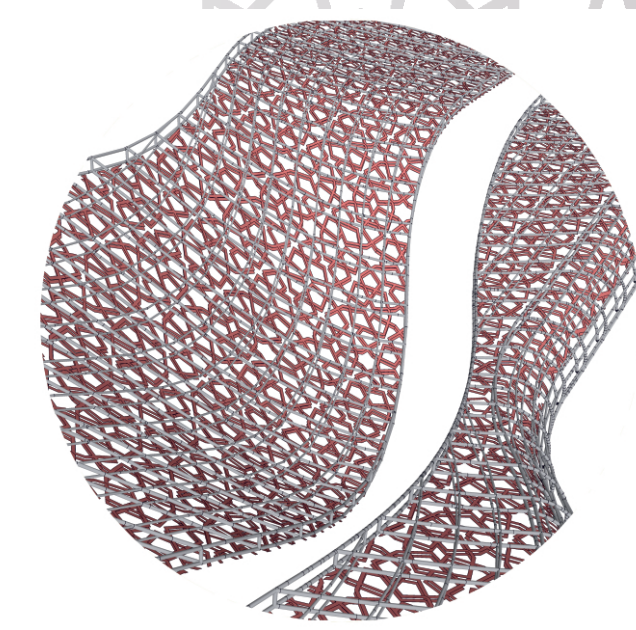
Constructive canopy system



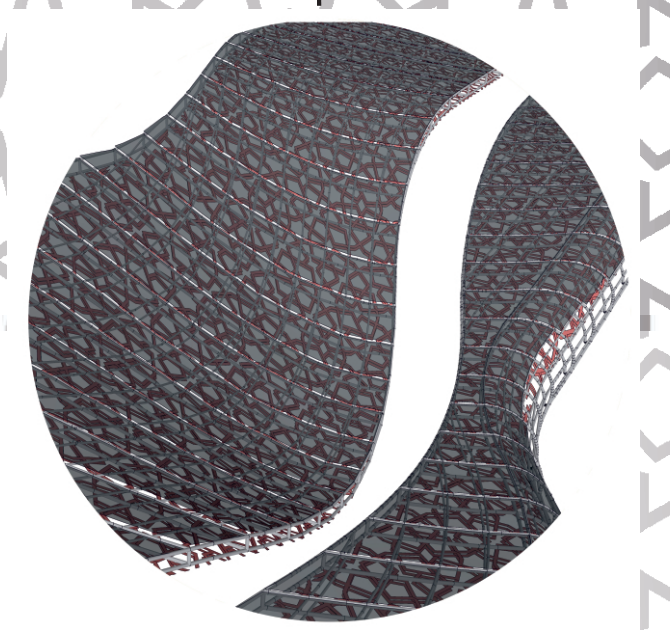
metal structure



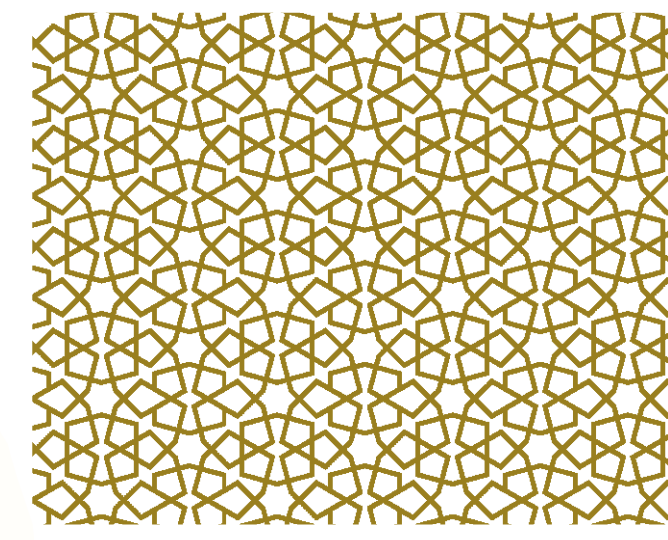
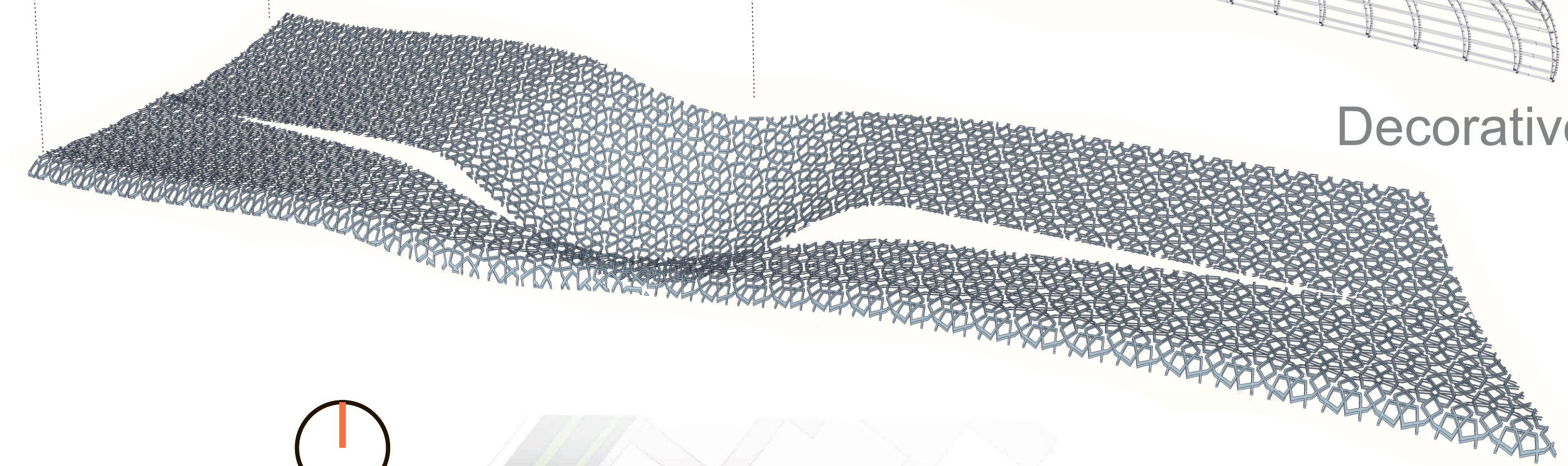
decorative arabic ornaments



Solar panel

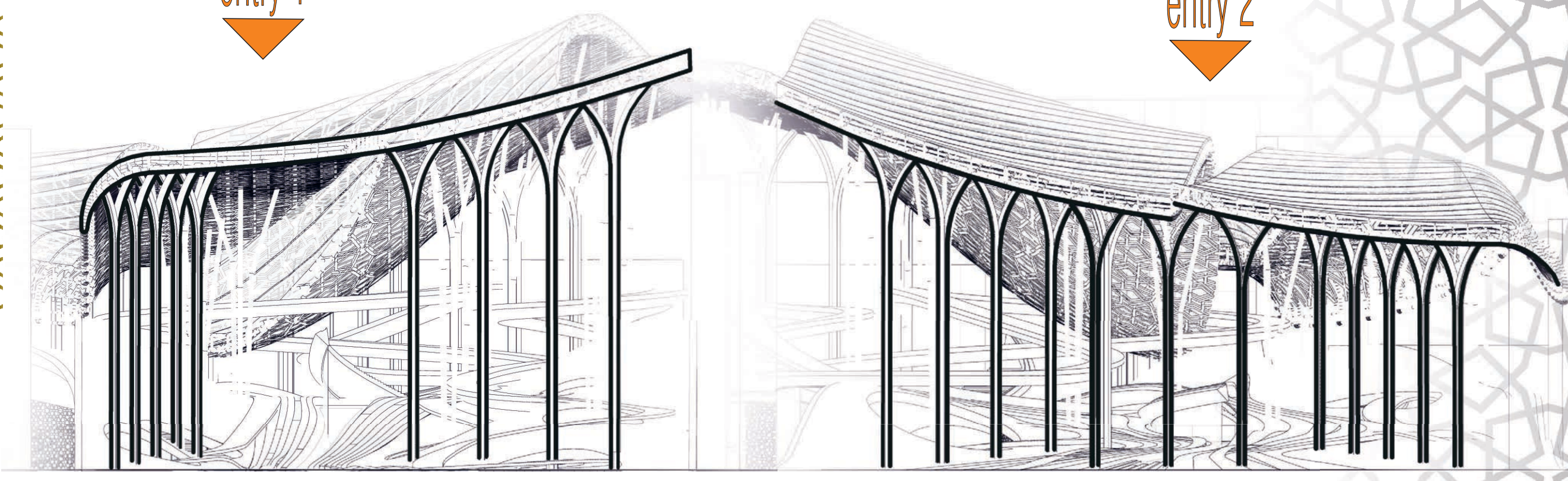


Decorative arabic ornaments



entry 1

entry 2



Silhouette of a traditional arabic arch

