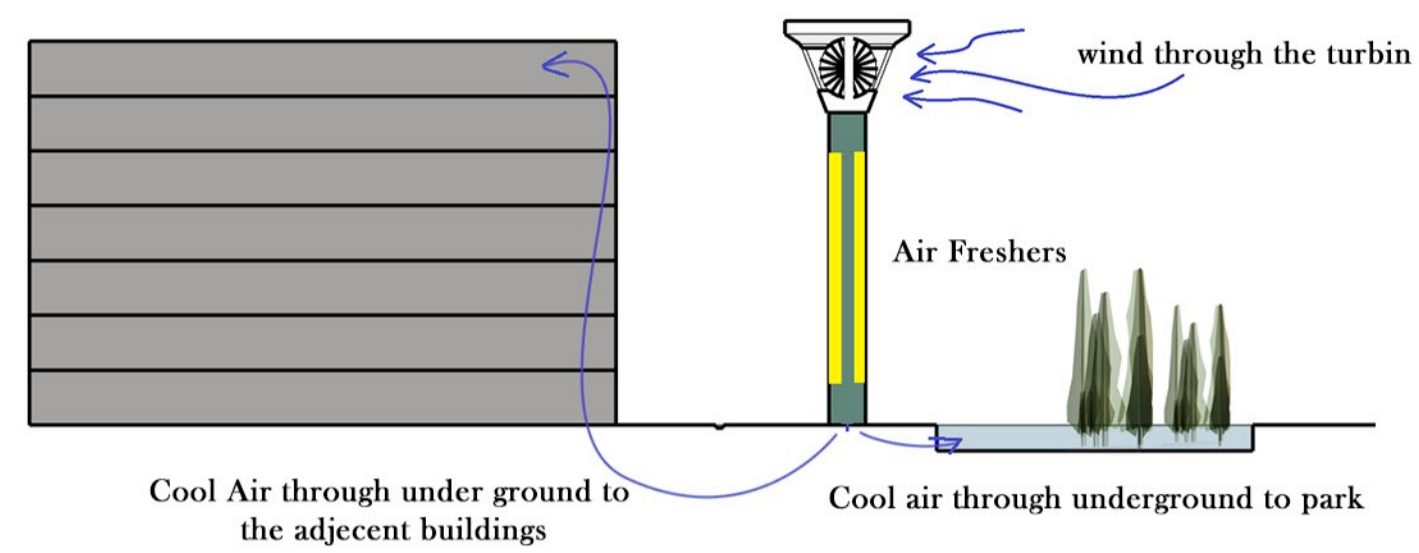
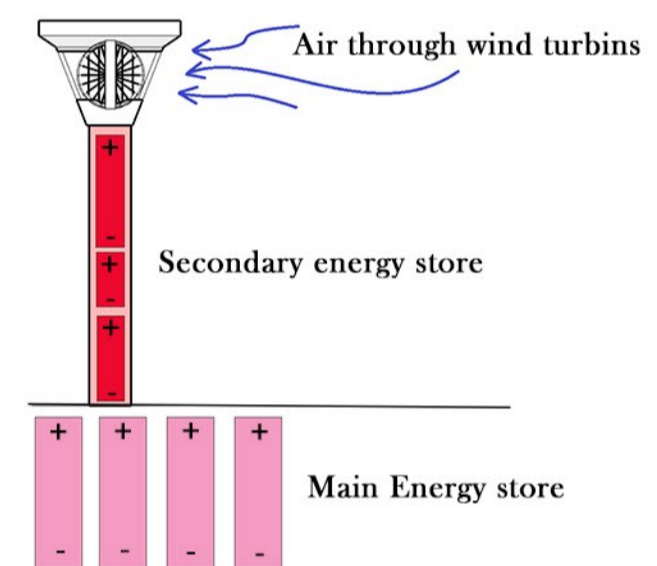


## we use two types of towers, with the same form.

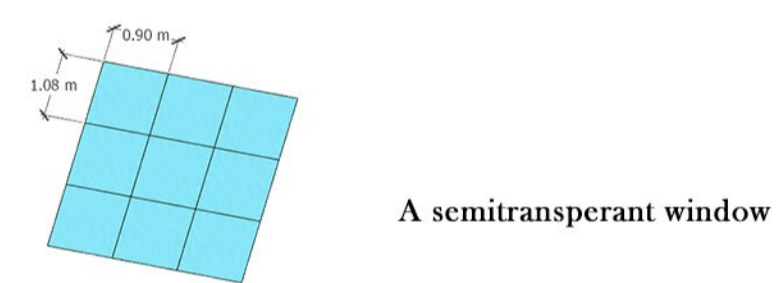
the passive cooling which is provided throughThe wind towers which transmit cool air into the area and also transmitted through Ground pipes to the adjacent buildings.



The second Type is a tower containing energy storing devices which store the energy collected by the solar panels.



Every semitransparent window contains 9 (1.08x0.9) cell that supply 164 Watt/hour,it means every window supplies 1476 watt/h.



## The Shape Analays of our design

all materials that used are sustainable materialsLike Green Concrete, Steel, Tissue (in turbin fcircular fan)..  
The openings between between shelters helps for air circulation.

