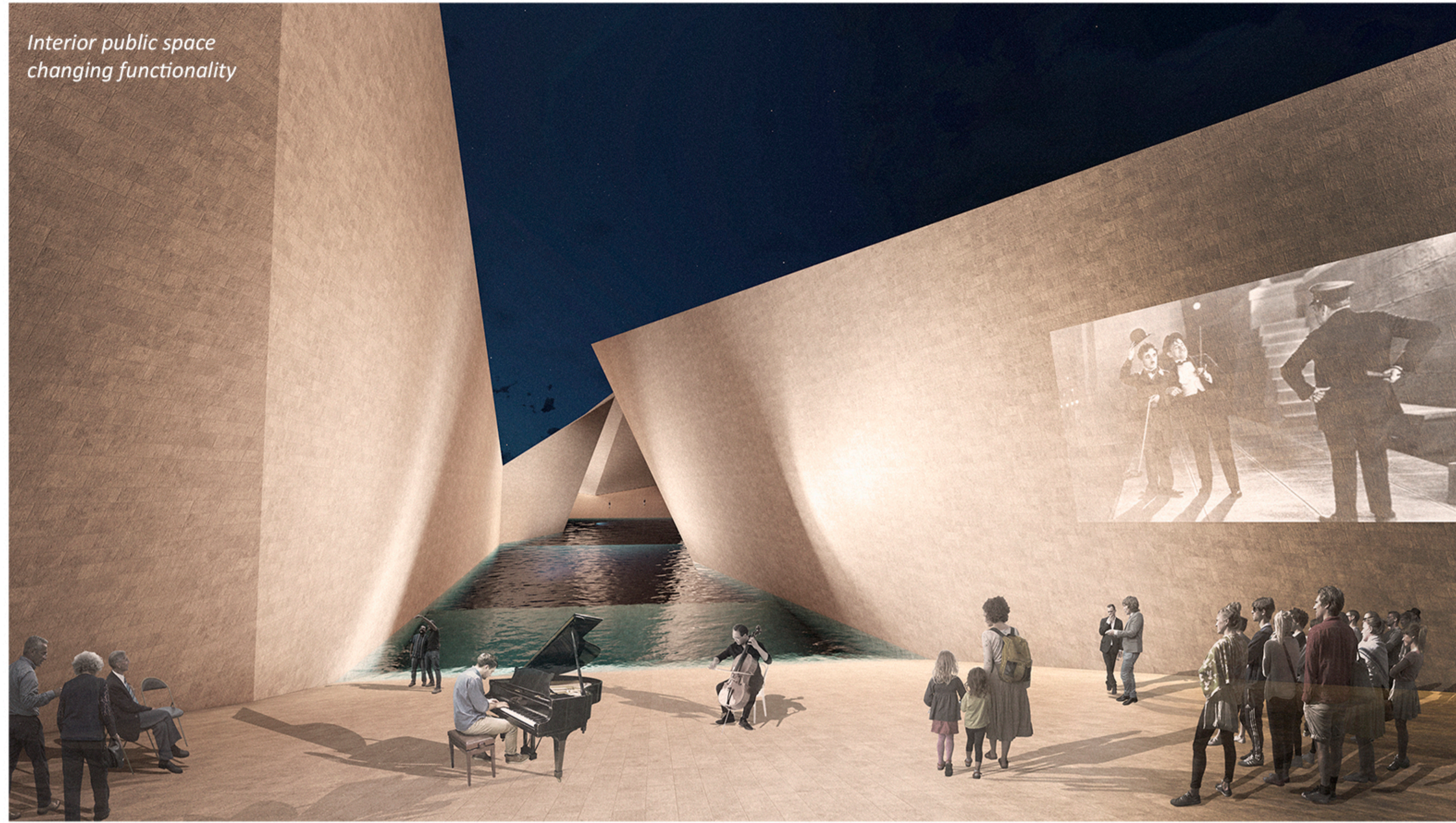
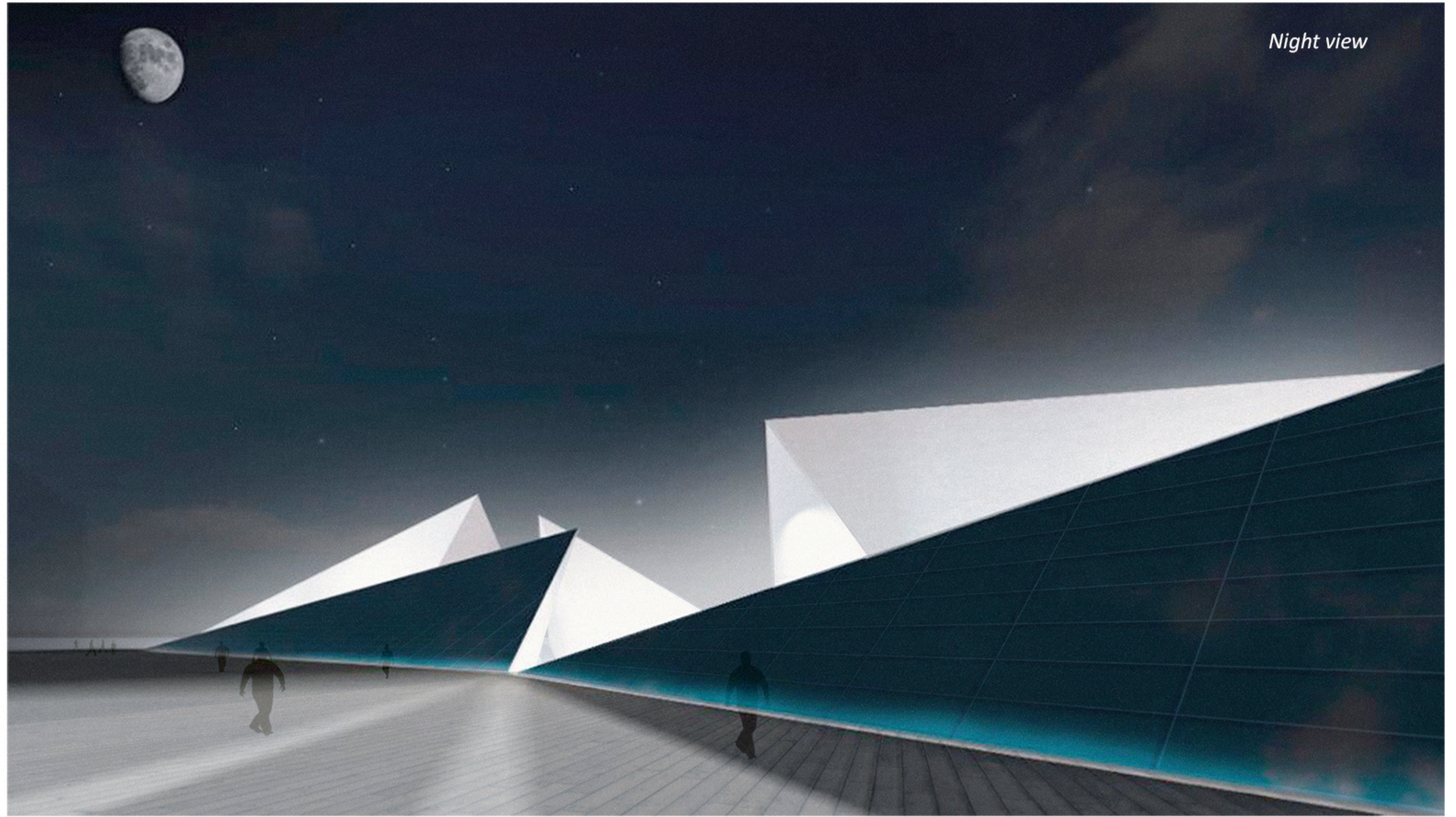


Interior public space  
changing functionality

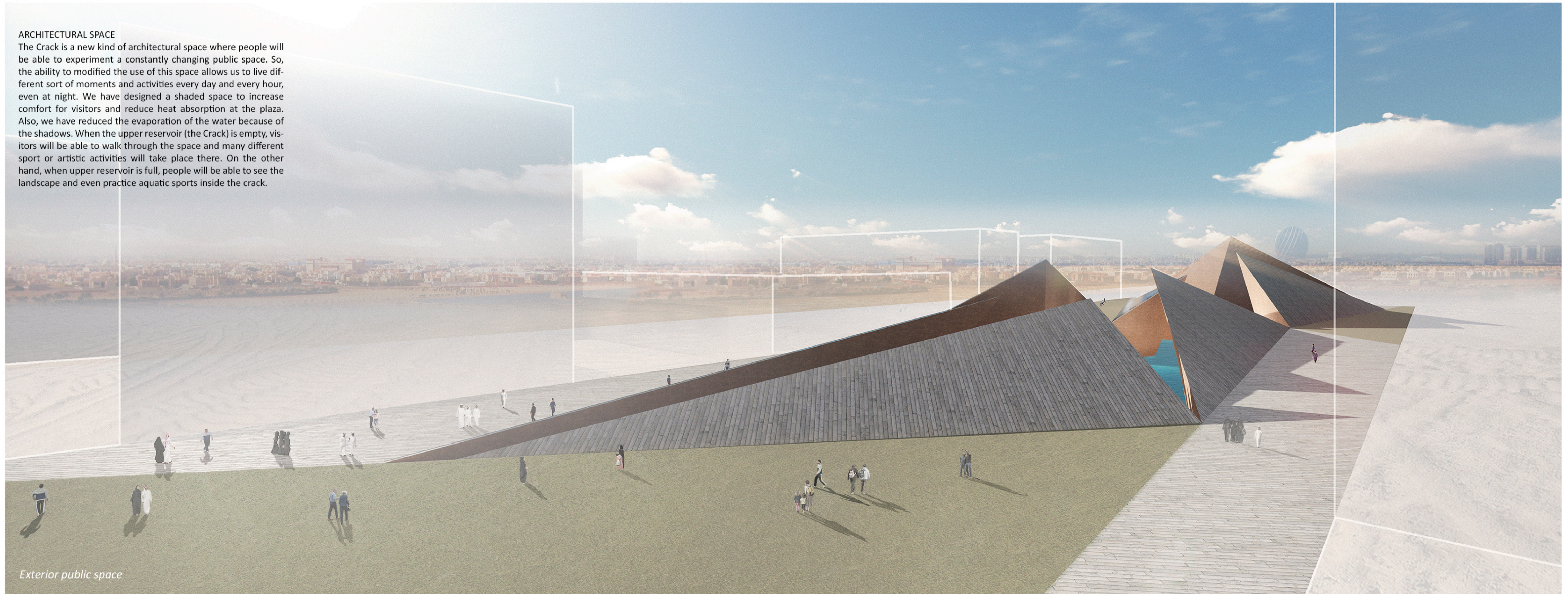


Night view



**ARCHITECTURAL SPACE**

The Crack is a new kind of architectural space where people will be able to experiment a constantly changing public space. So, the ability to modified the use of this space allows us to live different sort of moments and activities every day and every hour, even at night. We have designed a shaded space to increase comfort for visitors and reduce heat absorption at the plaza. Also, we have reduced the evaporation of the water because of the shadows. When the upper reservoir (the Crack) is empty, visitors will be able to walk through the space and many different sport or artistic activities will take place there. On the other hand, when upper reservoir is full, people will be able to see the landscape and even practice aquatic sports inside the crack.



Exterior public space