

“A sky reaching event shines on Masdar’s horizon celebrating the exponential change of renewable energy into a spectacle of light.”



Pinnacle of structural support pole in recycled stainless steel

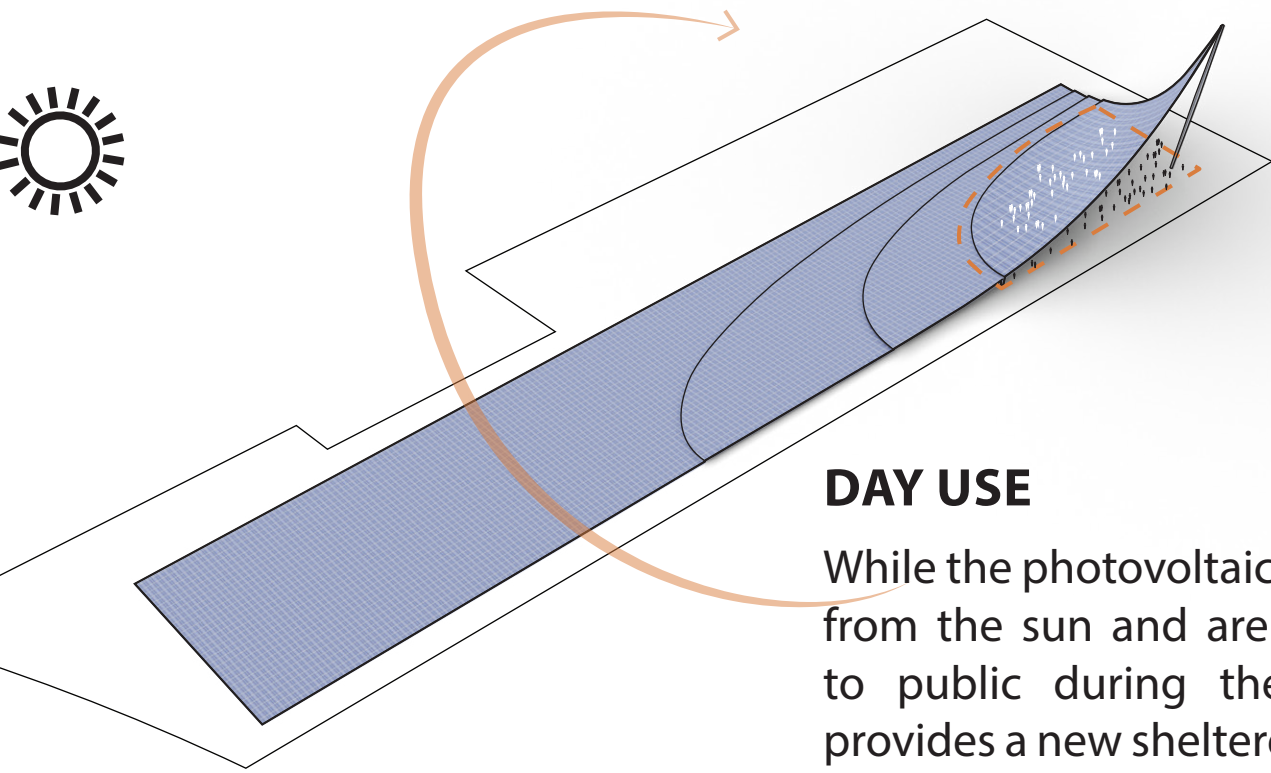
Beam light LEDs connected to main centraline

Structural recycled steel pole spanning up to 40m high

Elctrical wire system connection

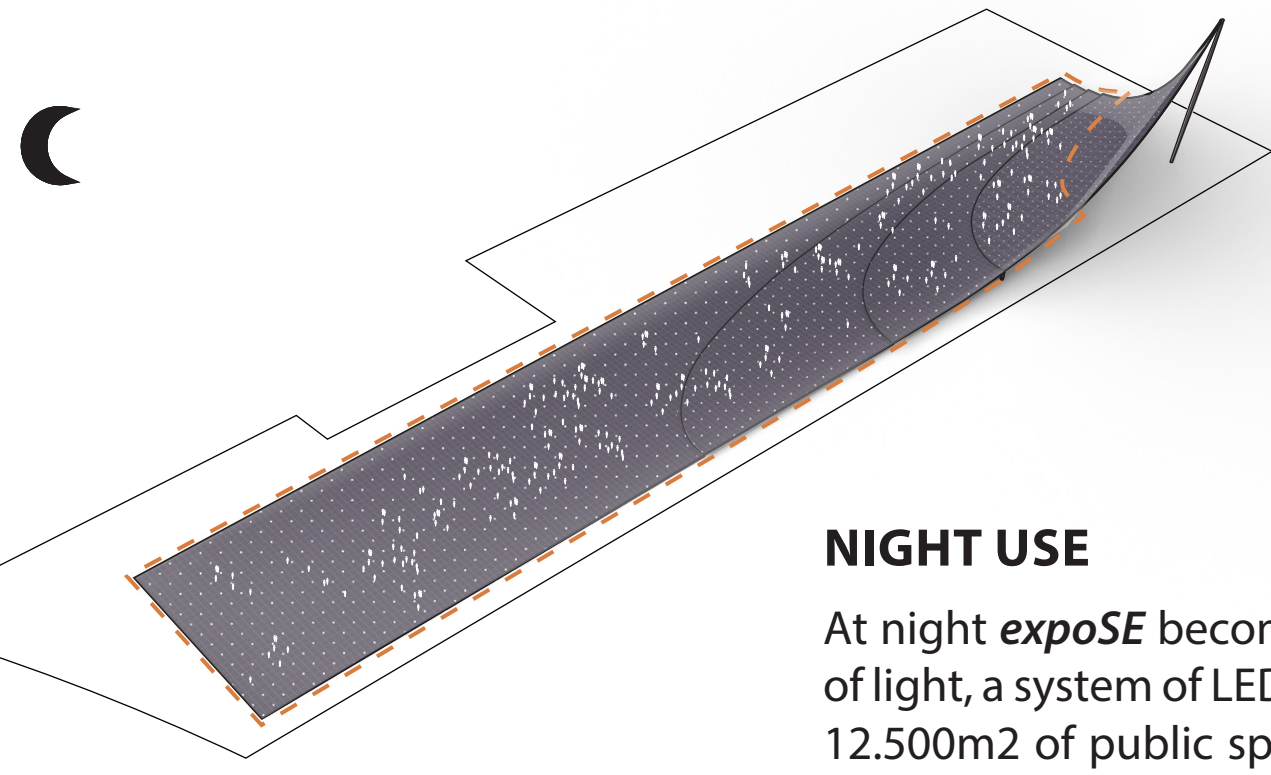
PINNACLE BEAM LIGHT DETAIL

DESIGN USES DIAGRAMS



DAY USE

While the photovoltaics create energy from the sun and are not accessible to public during the day, *expoSE* provides a new sheltered public space of 2.500m2 created for a various range of public activities to best use in the day.



NIGHT USE

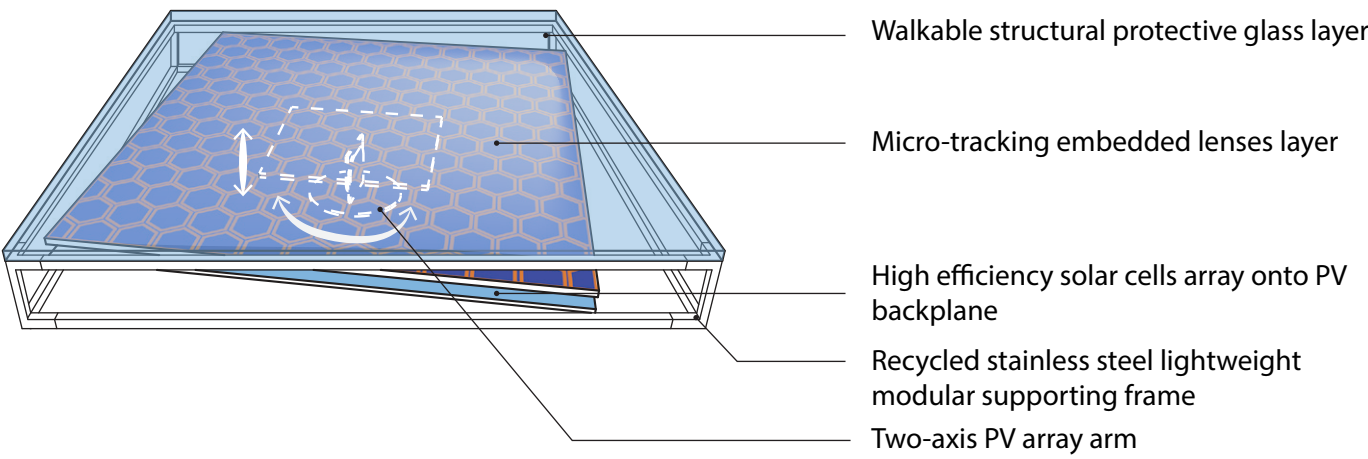
At night *expoSE* becomes a spectacle of light, a system of LEDs shines across 12.500m2 of public space created for a celebration of energy.

ENERGY PRODUCTION

387.000kWp
892.200.000 kWh/Year

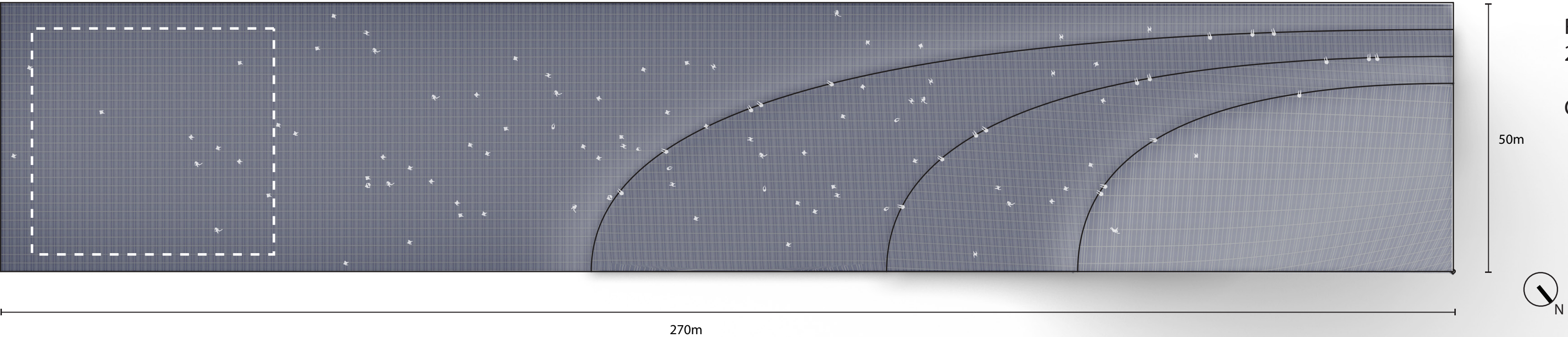
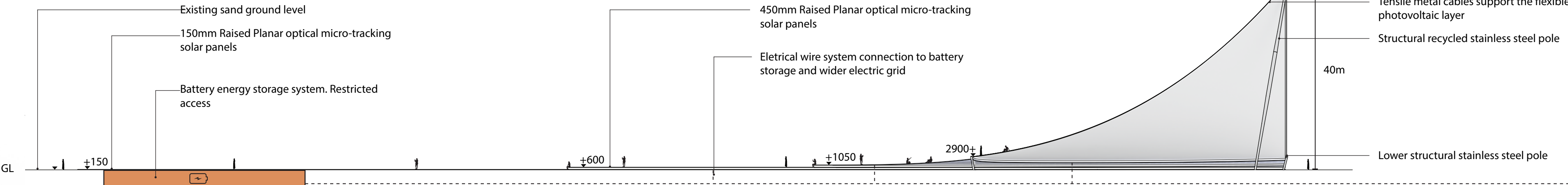
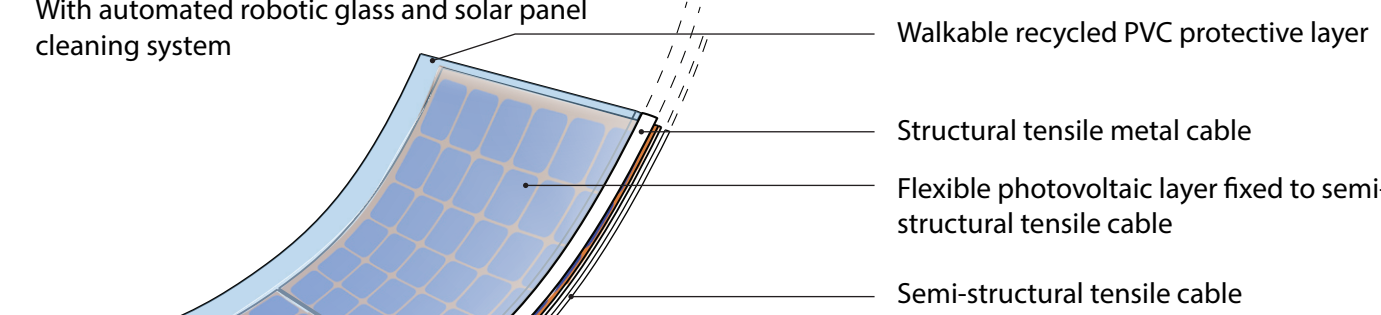
PLANAR OPTICAL MICRO-TRACKING SOLAR PANELS

Capacity rating 850W/m²
With automated robotic glass and solar panel cleaning system



CIGS (COPPER INDIUM GALLIUM SELENIDE) SOLAR PANELS

Capacity rating 320W/m²
With automated robotic glass and solar panel cleaning system



Reaching out for the sky is a pinnacle sky light: 2kW can stretch to 2-3km

Over an area of 15.050m² LEDs system: 1.7kW