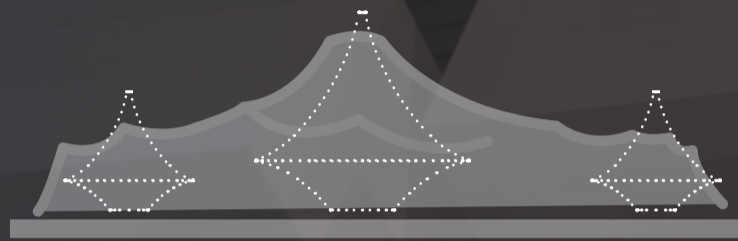


SOLAR BEIT

DESIGN CONCEPT

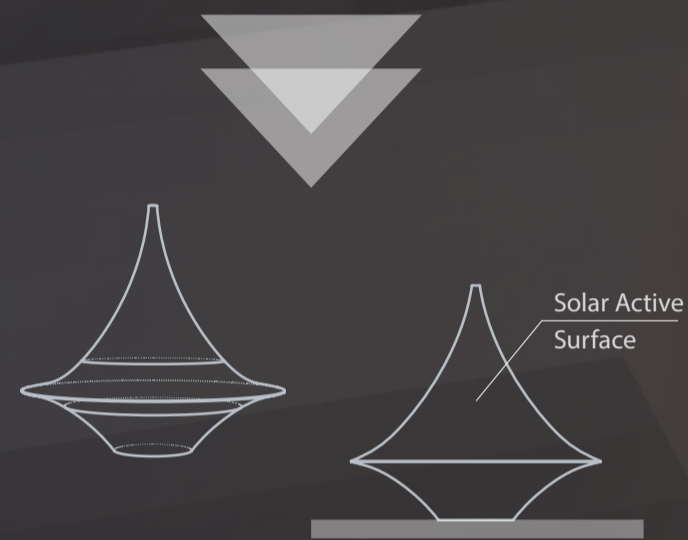
BEIT ARABIC: بيت - A HOUSE

PAST - THE SILHOUETTE

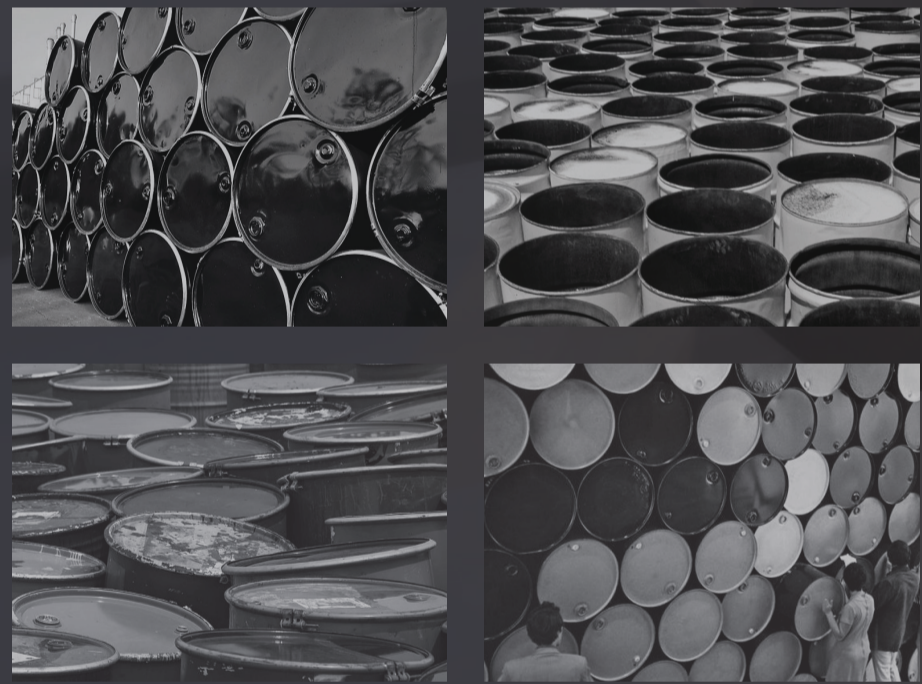


Bedouin Tent / Historic Examples

Images depicting bedouin tent structures throughout different cultures and historic periods.



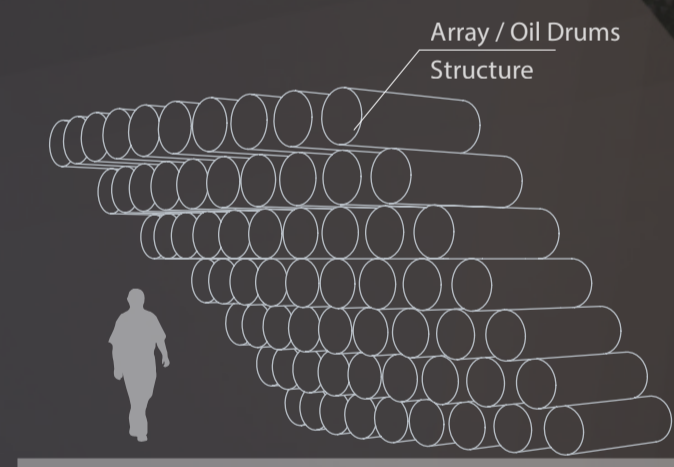
PRESENT - THE STRUCTURE



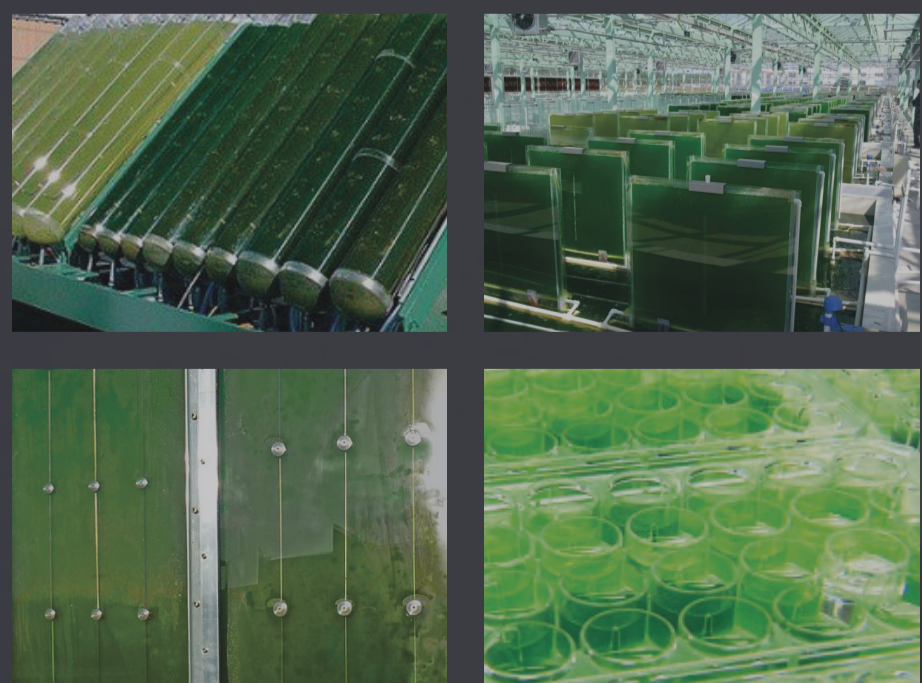
Circular Economic Model

A circular economy is an economic system aimed at minimising waste and making the most of resources.

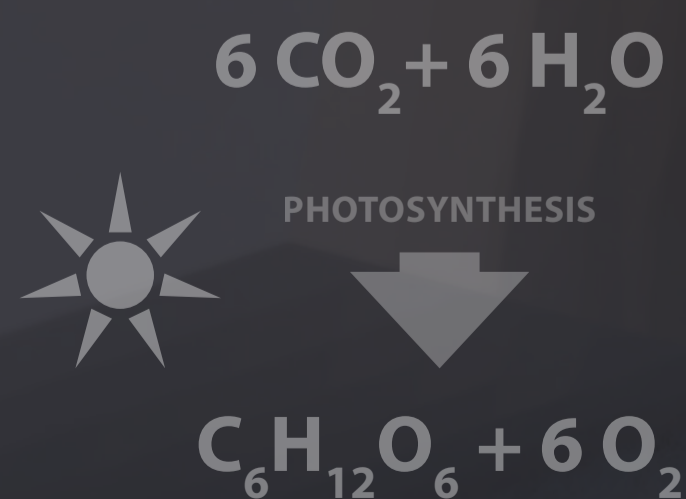
Oil Drum / Barrel as a structural element
Images depicting steel drums.



FUTURE - THE TECHNOLOGY

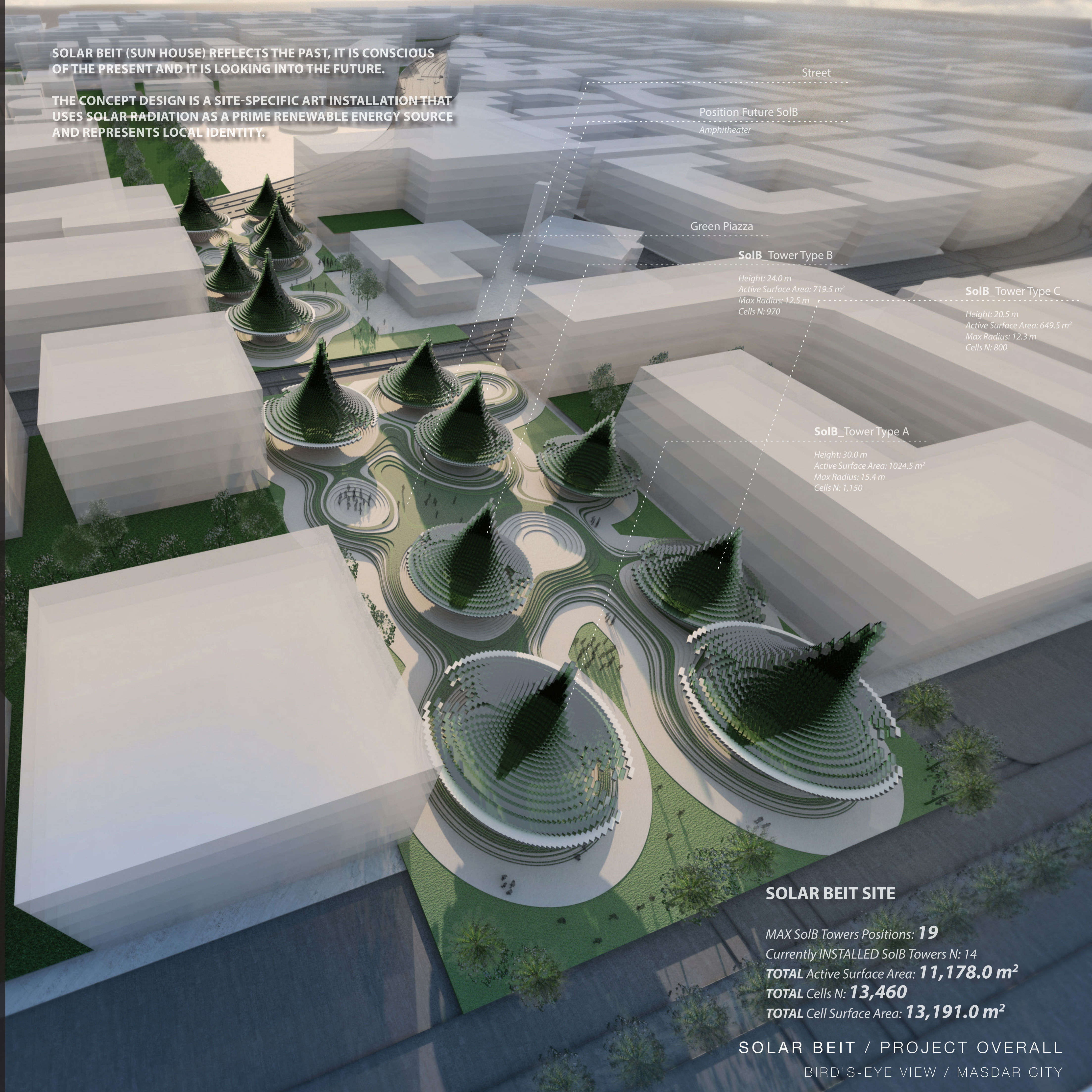


Algae as a source of energy
Images of Algae-powered Bio Solar cell



SOLAR BEIT (SUN HOUSE) REFLECTS THE PAST, IT IS CONSCIOUS OF THE PRESENT AND IT IS LOOKING INTO THE FUTURE.

THE CONCEPT DESIGN IS A SITE-SPECIFIC ART INSTALLATION THAT USES SOLAR RADIATION AS A PRIME RENEWABLE ENERGY SOURCE AND REPRESENTS LOCAL IDENTITY.



Street

Position Future SolB
Amphitheater

Green Piazza

SolB_Tower Type B

Height: 24.0 m
Active Surface Area: 719.5 m²
Max Radius: 12.5 m
Cells N: 970

SolB_Tower Type C

Height: 20.5 m
Active Surface Area: 649.5 m²
Max Radius: 12.3 m
Cells N: 800

SolB_Tower Type A

Height: 30.0 m
Active Surface Area: 1024.5 m²
Max Radius: 15.4 m
Cells N: 1,150

SOLAR BEIT SITE

MAX SolB Towers Positions: **19**
 Currently INSTALLED SolB Towers N: 14
TOTAL Active Surface Area: 11,178.0 m²
TOTAL Cells N: 13,460
TOTAL Cell Surface Area: 13,191.0 m²

SOLAR BEIT / PROJECT OVERALL

BIRD'S-EYE VIEW / MASDAR CITY