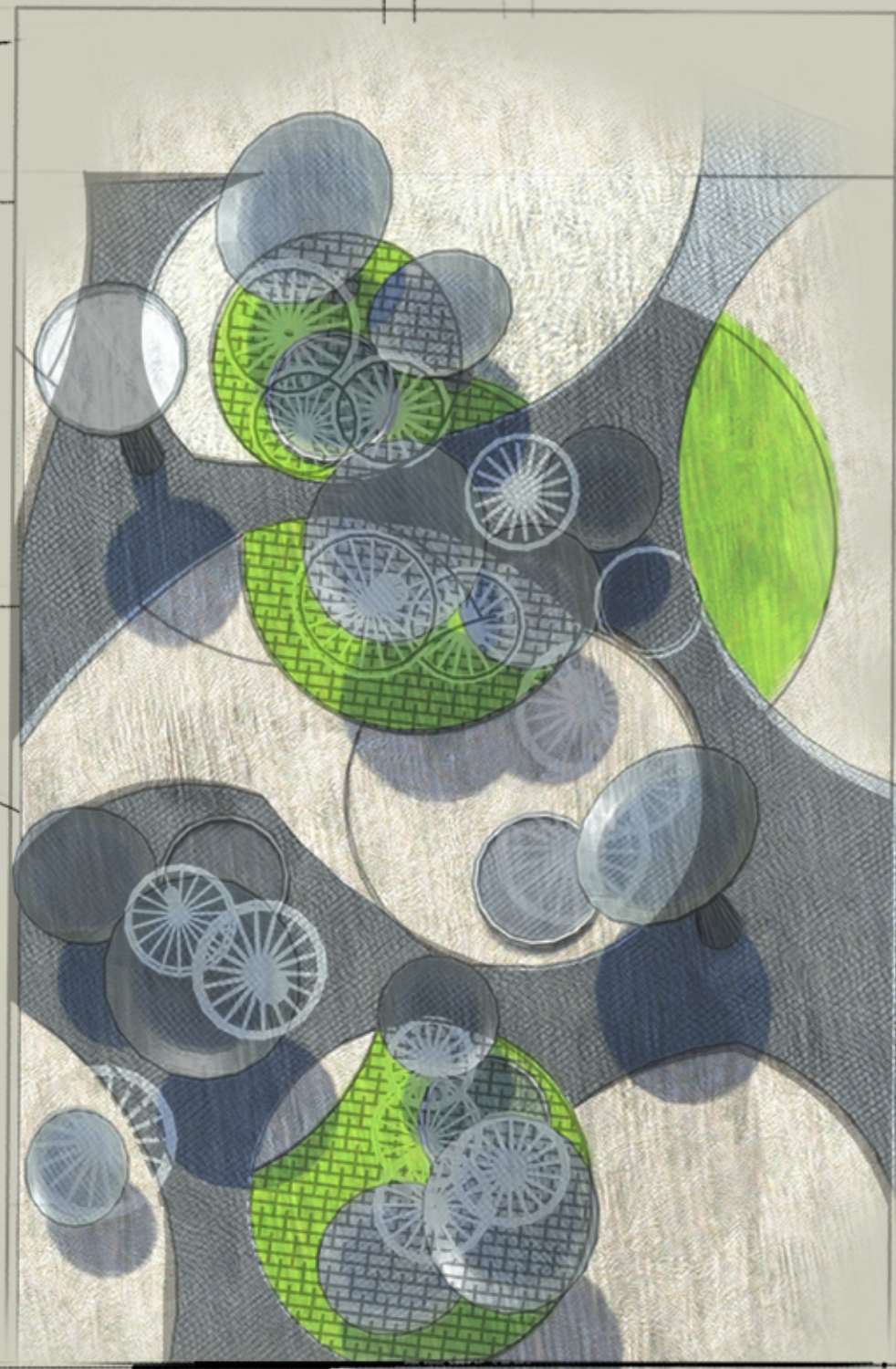
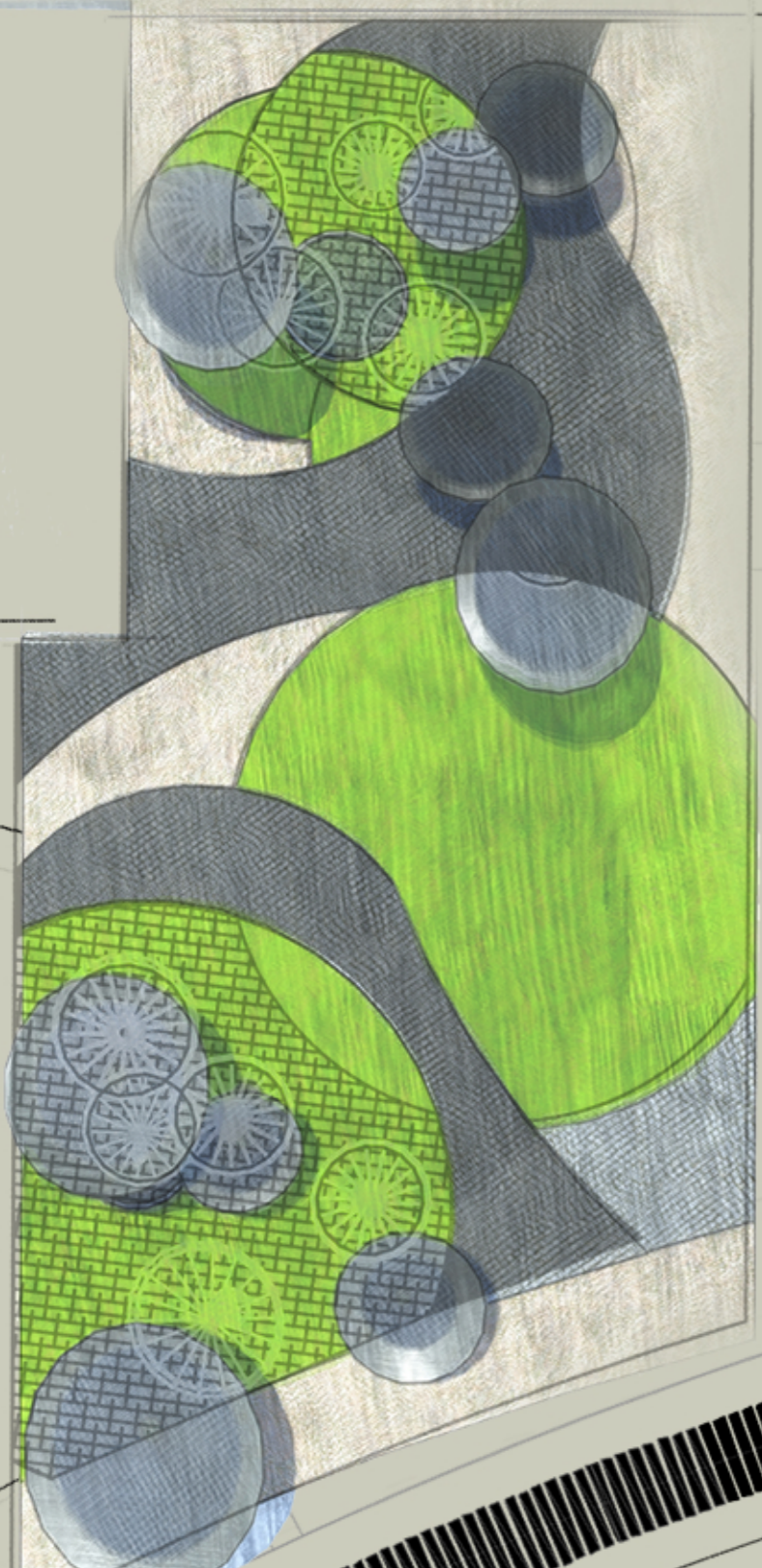


. AN ECOLOGICAL AND SUSTAINABLE URBAN PARK



- *GREEN AREAS
- *PLAYGROUNDS
- *PEDESTRIAN PATHS
GUIDING VISITORS THROUGH THE ENTIRE PARK STROLL



- *USE OF LOCAL MATERIALS TO:
ASSURE A BETTER INTEGRATION INTO THE SITE
RESPECT THE NATURAL PANORAMA



AN OBSERVATORY OFFERING A PANORAMIC VIEW ON THE CITY



CIRCULAR PUBLIC BENCH CENTERED BY SOLAR PANEL



PROVIDING SHADED SPACES

