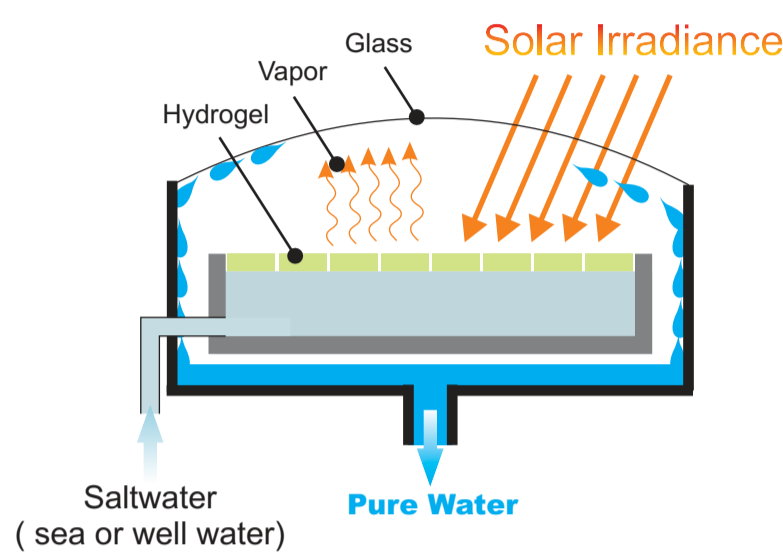




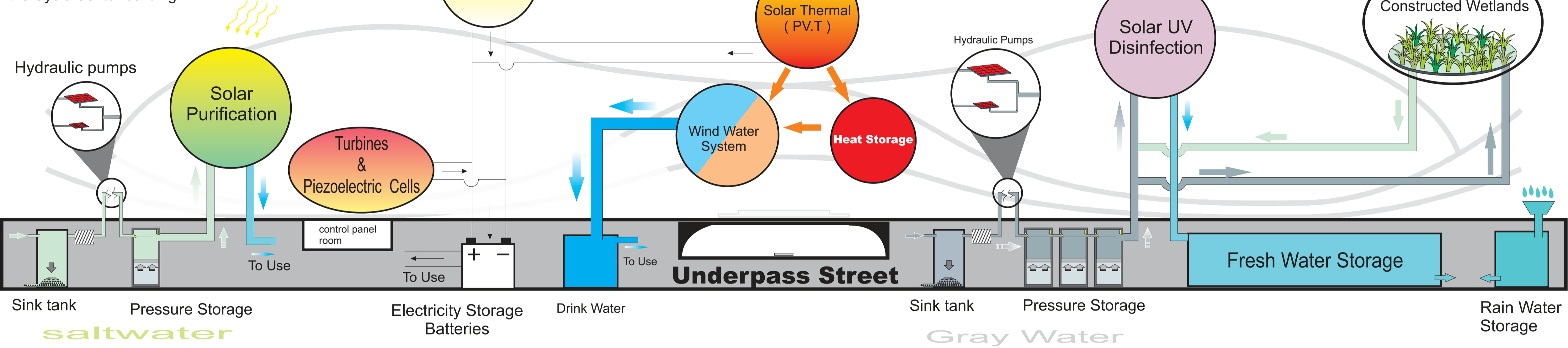
systems & installations

INFINITY as an integrated energy harvesting system and water purification system has different installations and communications. INFINITY is an ecosystem and all parts have interaction with each other .

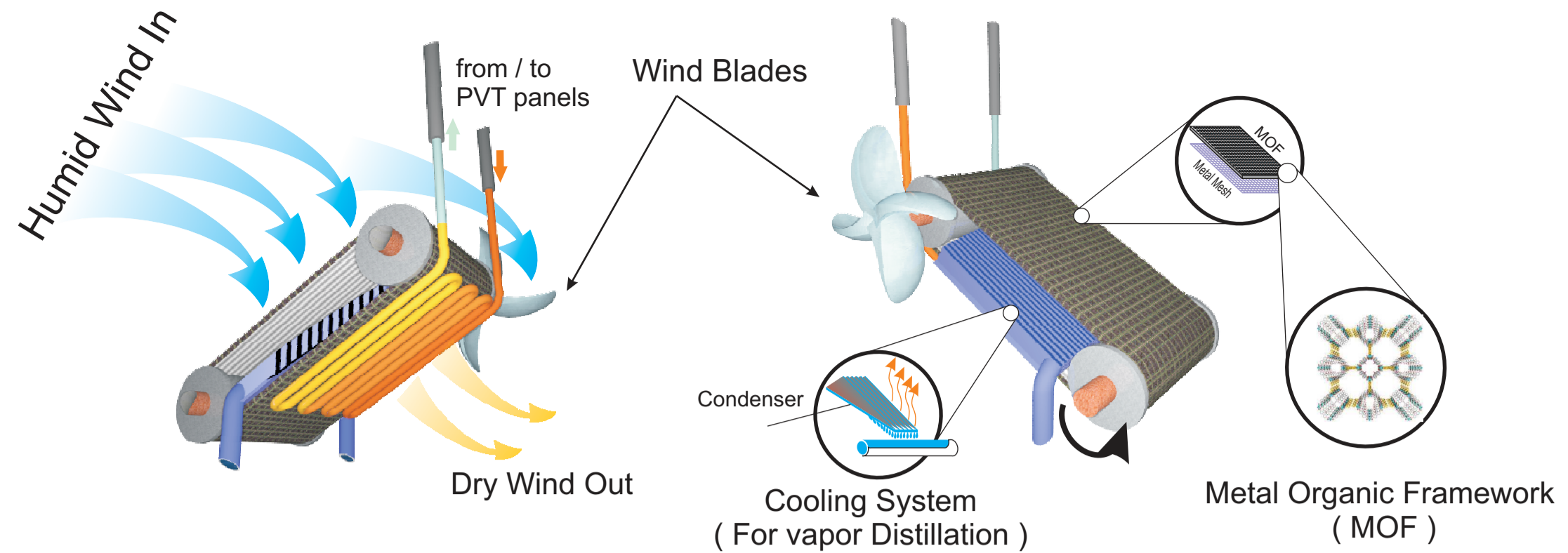
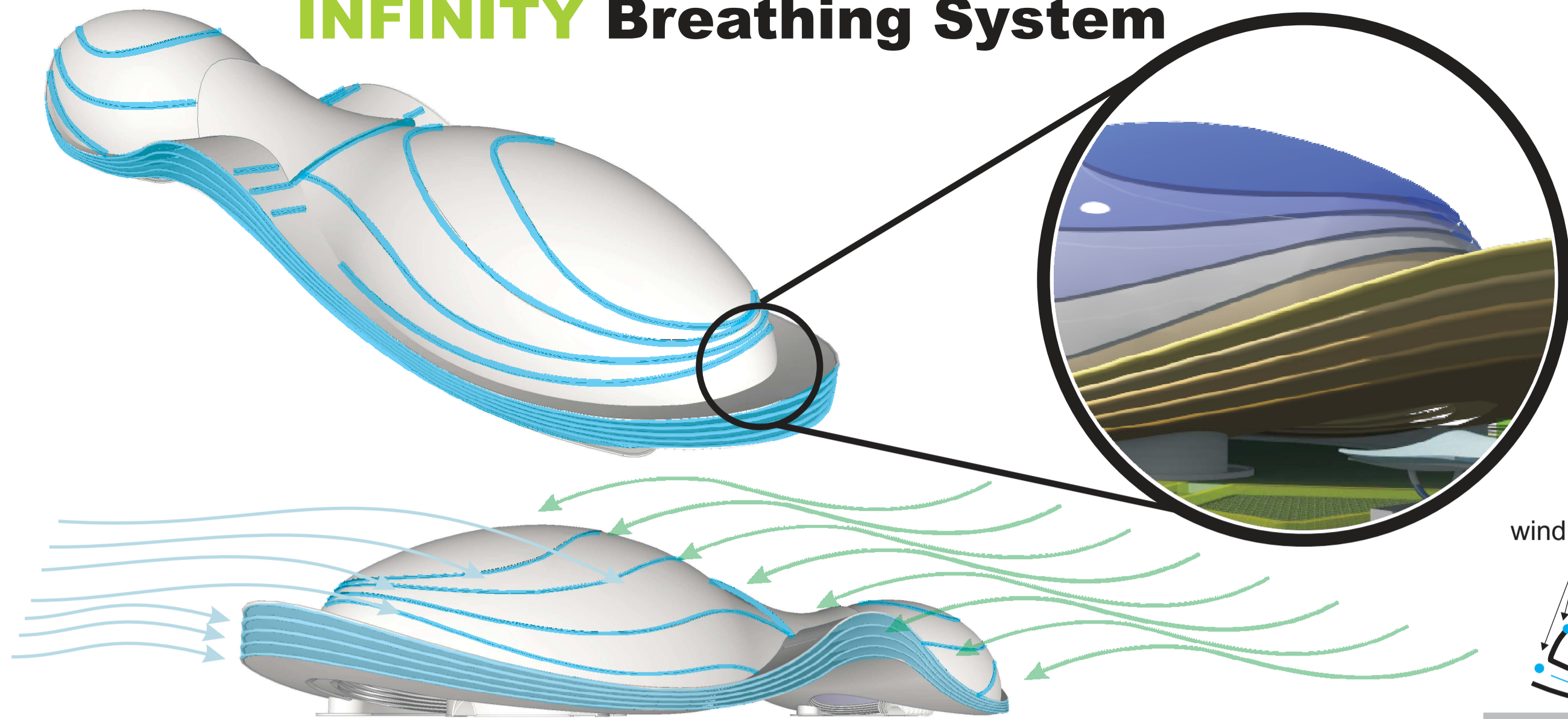


Saltwater Purification System

Purification units are arranged in rows and all the units are integrated with the Cycle Center building .



INFINITY Breathing System

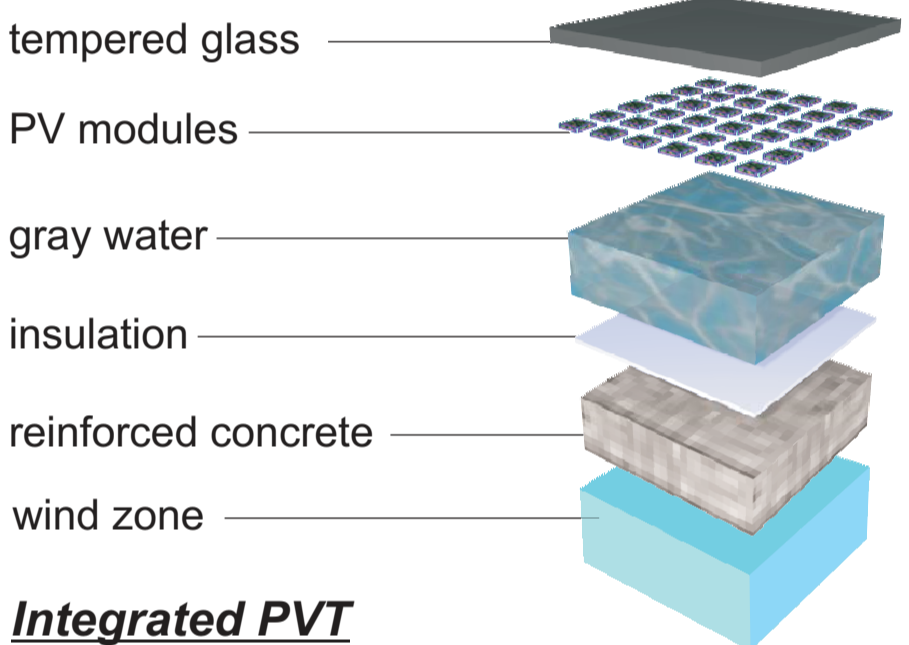


INFINITY Wind Water Generator System

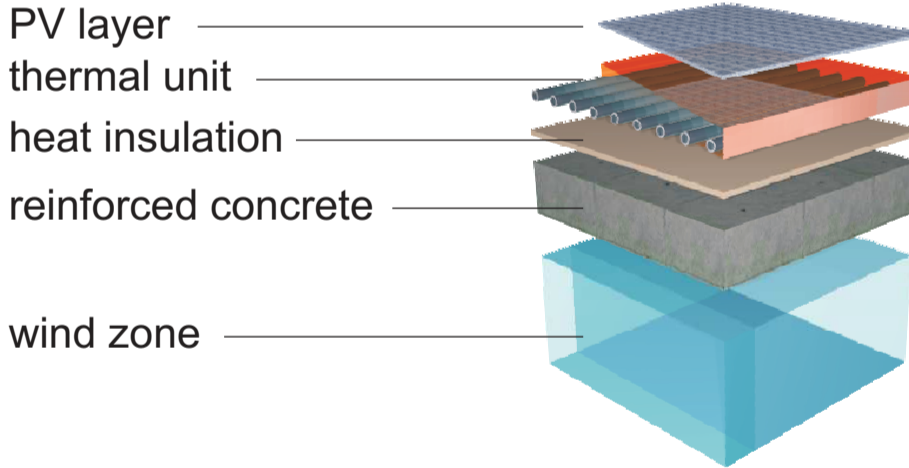
It's an efficient and creative system to capture water from air . It's dynamic and whenever the wind flows , it works. It makes pure water from humid air and wind , so it is **Wind Water** system .

BIPV systems

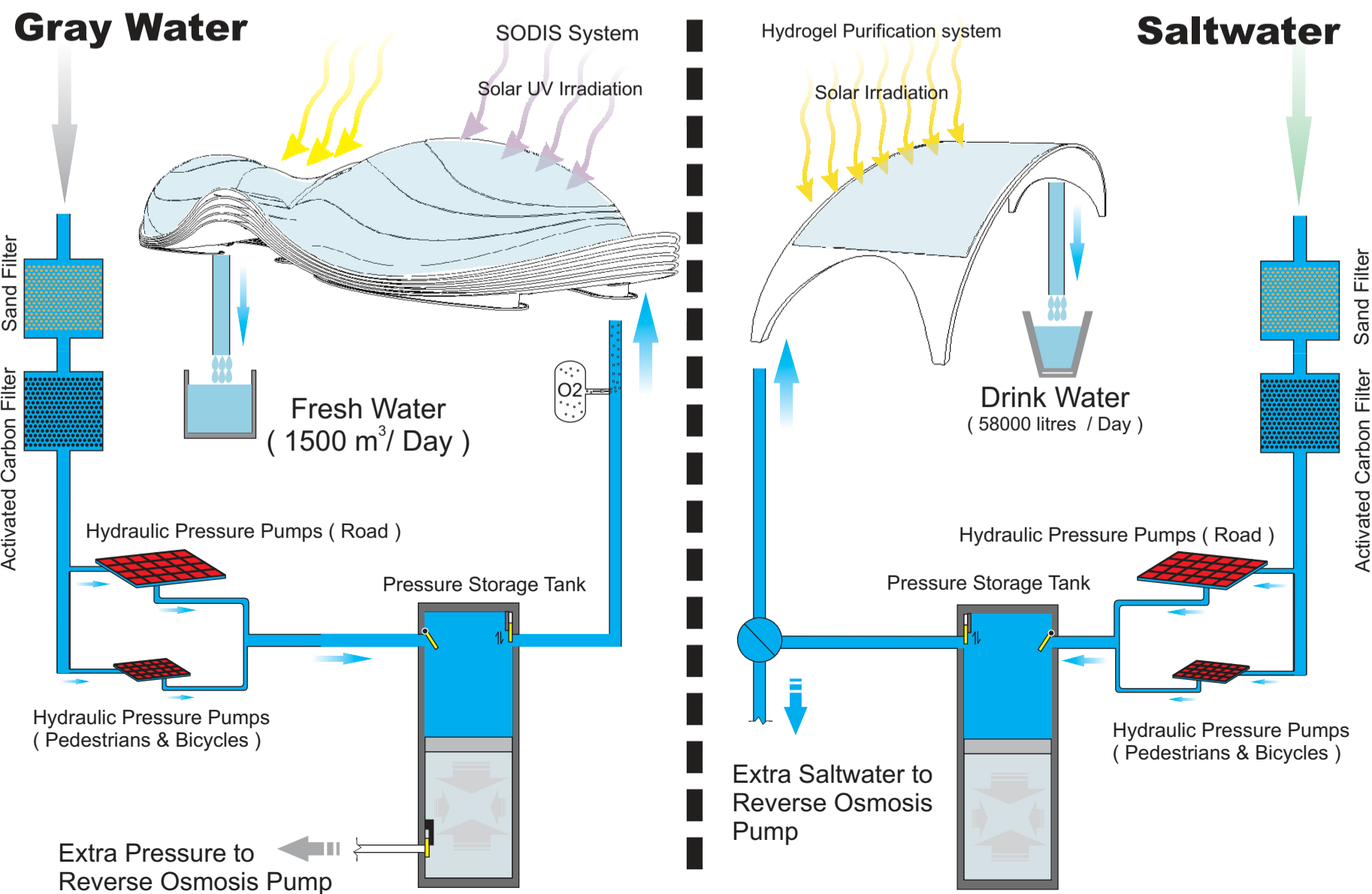
PV + solar disinfection



Integrated PVT

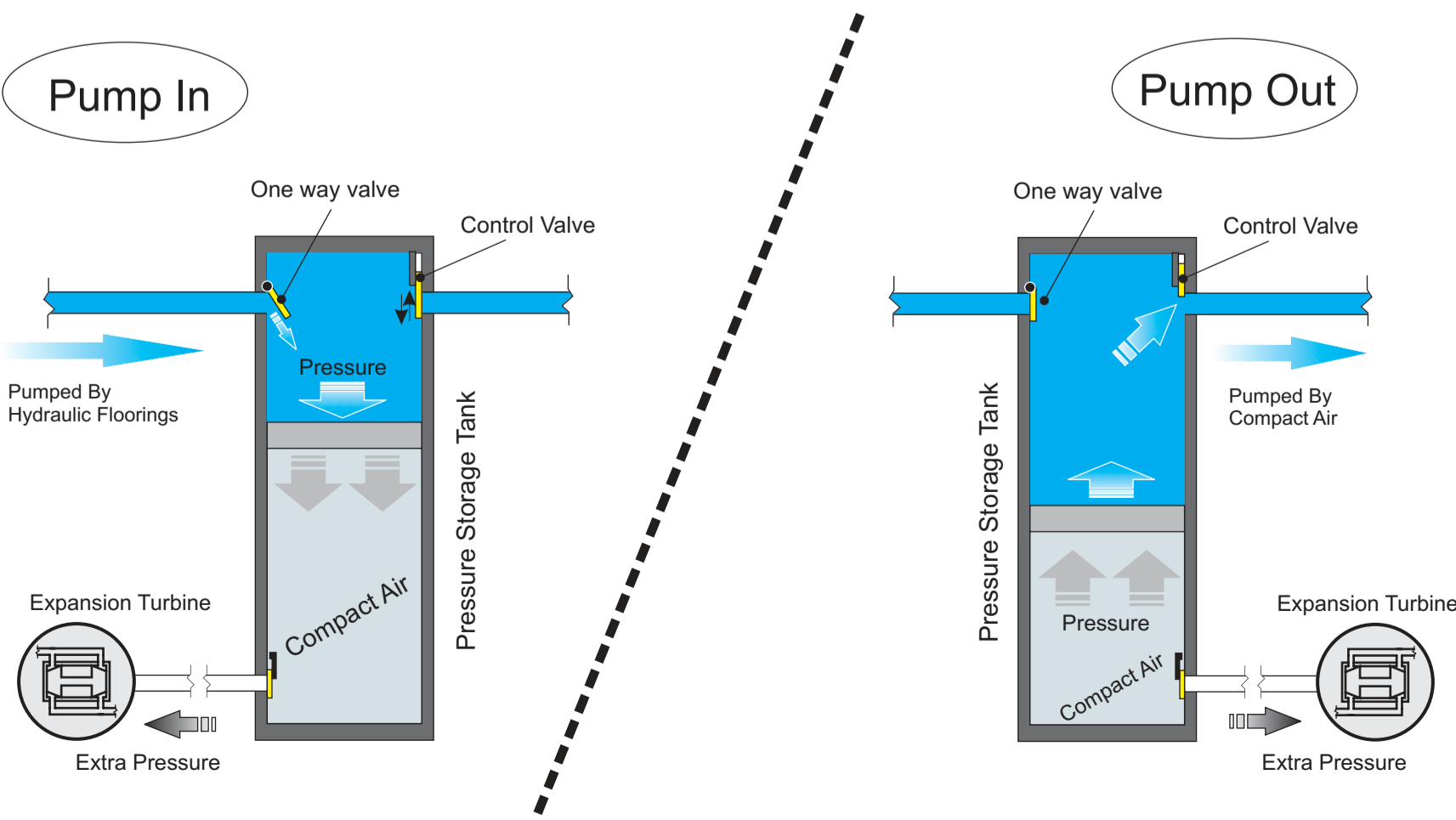


INFINITY Water Cycle System

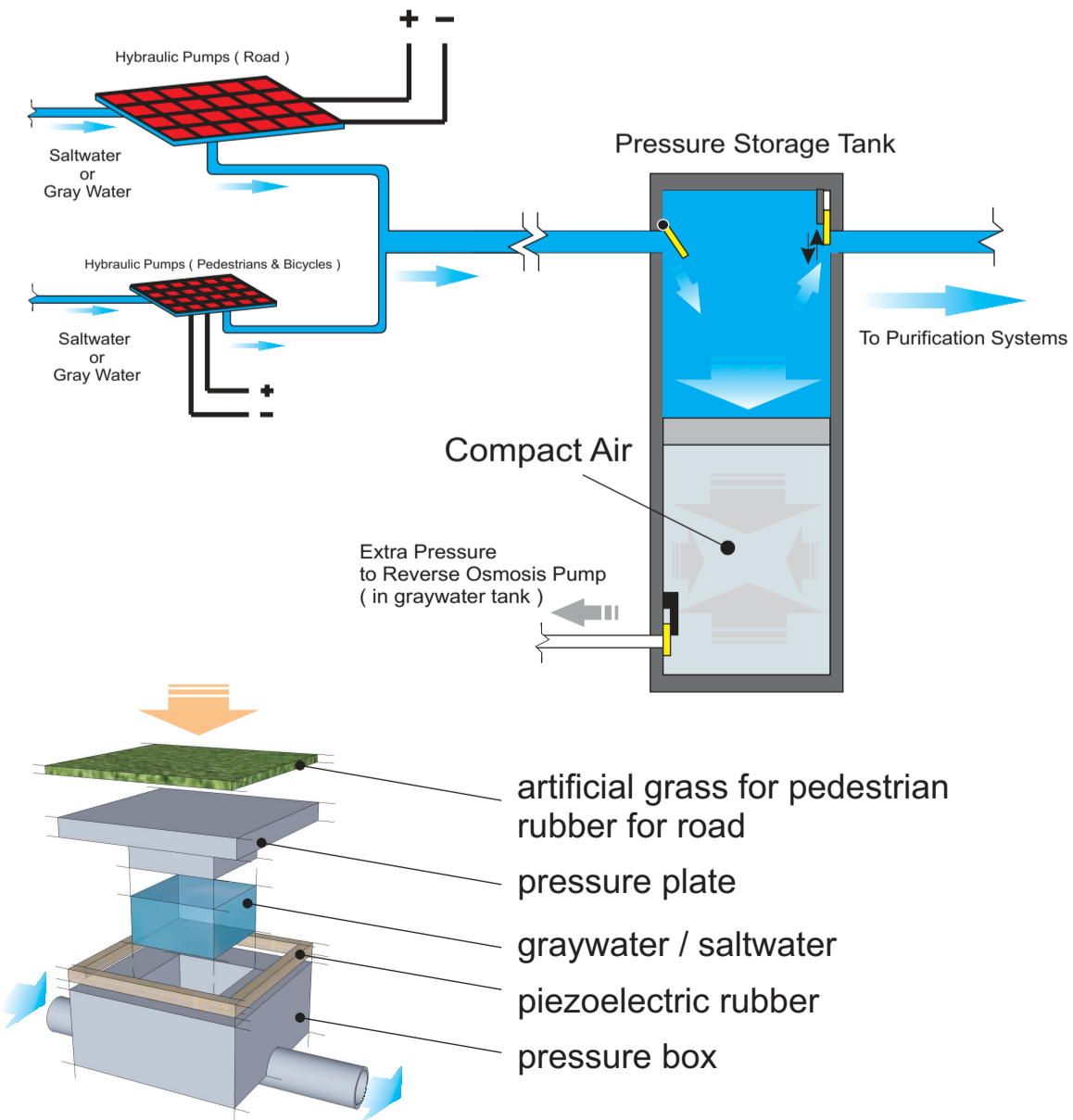


INFINITY Pressure Storage System

Pressure can be stored as an energy storage and be used when needed . The pressure made by **Hydraulic pumps** can provide all needed mechanical energy of all installations by using directly or as stored pressure energy .

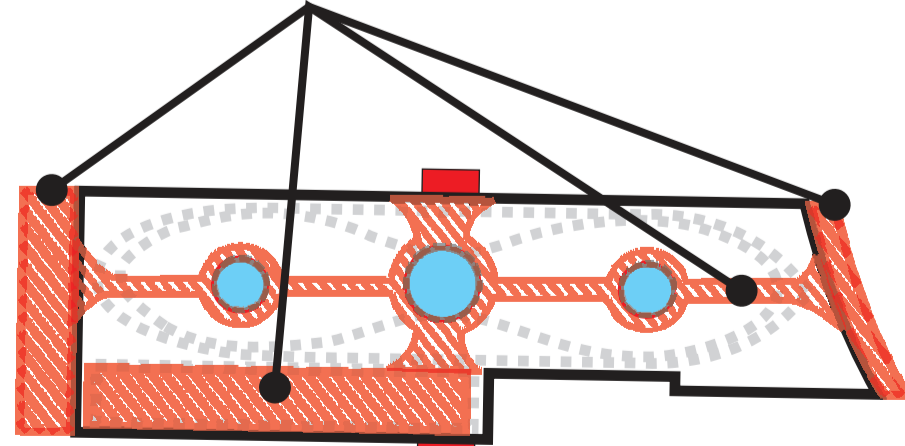


INFINITY Hyblaulic flooring pumps



Hydraulic Flooring Area

Pedestrian Area
(5000 m² = 500,000 units)



Underpass Road Area
(1800 m² = 45,000 units)