

Unexpected Scenarios

An Event to Attend



A square is a place where people activities take place and stories begin.

Unexpected Scenarios wants to provide a new landmark in the middle of a desert masterplan evolution. The design wants to surprise the citizen by giving them the opportunity to attend an event where the last sphere, the white, hidden underground, appears through inflation made possible by the energy collected from the sun during the day. The thermal heat will also give energy to the led stripes located on the spare between the cushions slices of the dome. When not in use, the sphere is without air laying underground and leaving the space above as a flat stage where people can interact and relax.

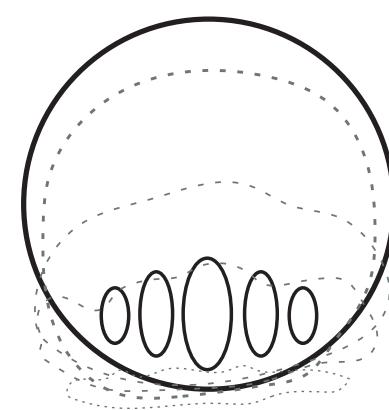
The white sphere is 40 mt width and it is made in ETFE (Ethylene Tetra Fluoro Ethylene) inflatable with led strips integrated in the vertical spars. The floor pavement is made in concrete and directly connected with the ground; it is the only fixed part of

the design. Being an inflatable construction, it can be removed or substituted anytime.

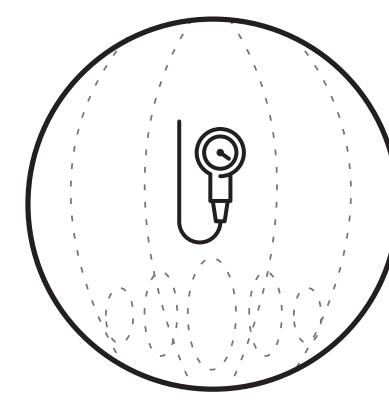
The structure will represent a new symbol where public events can be developed and shared and the area underneath, which is 4775 mq, will be able to hold other events like Abu Dhabi Art Fair and so on. Multiple sensors, located throughout the dome structure, monitor the external environment and adjust the pressure of the cushions accordingly. For example, in high wind speed, pressure will be compensate by making the sphere more rigid.

The merit of the proposal is the possibility of change and modify the structure throughout the years, in order to answer to future functions and climate changes.

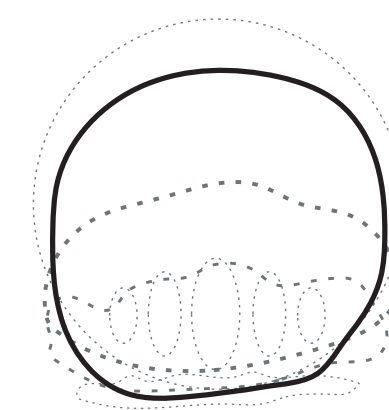
The evolution of the sphere, the desire and the curiosity of the event will create a new attraction in Masdar City, such as the sunset on the sea or the color of the desert under the moon light.



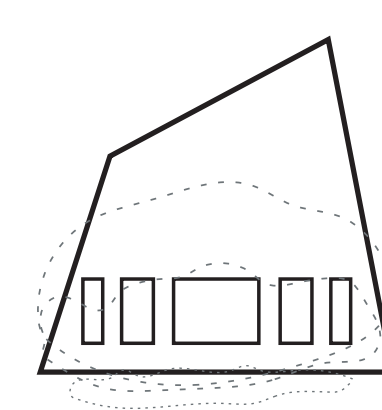
The energy create by the Stirling Engine inflate the ETFE sculpture.



During the day sensors controll the air pression inside the sphere.



In the early morning the sphere is dismantled automatically.



The square main sculpture can be changed in order to answer to future functions and climate changes.

