

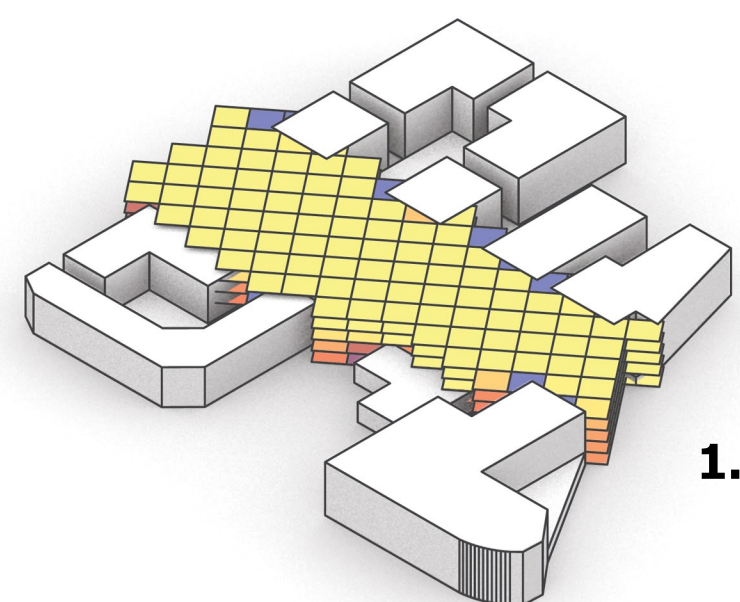
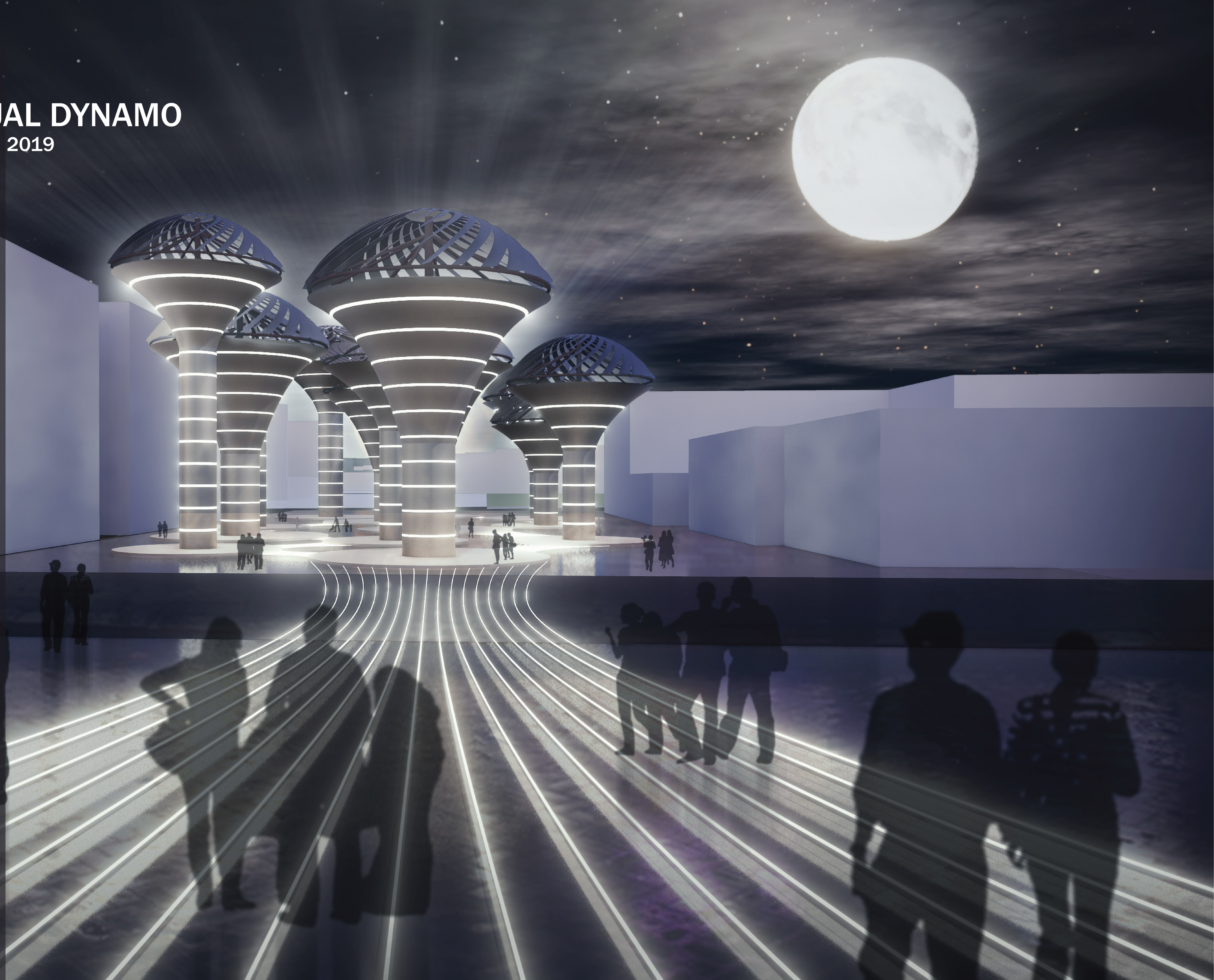
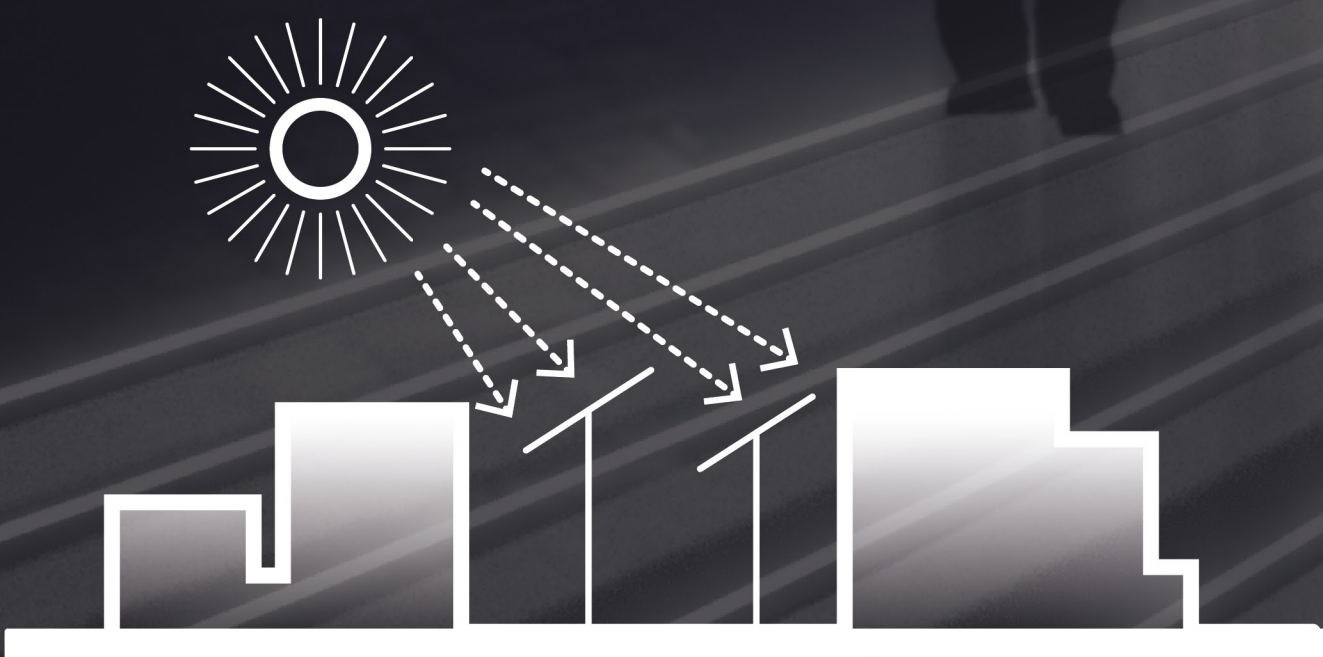


DUAL DYNAMO

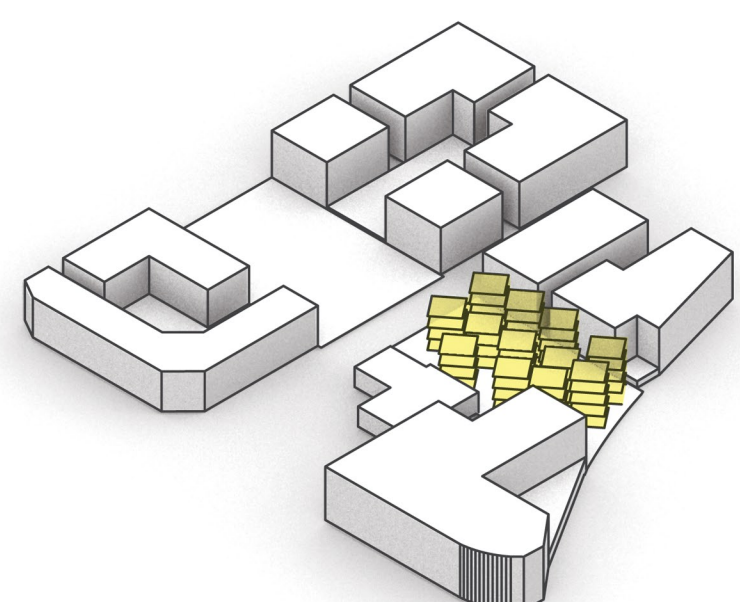
LAGI 2019

The project consists of a number of energy-generating plates, which, due to the stretch and enclosed site, are subjected to be exposed to sunlight in most hours of the day. The angle of these plates is changeable by its leverage and light sensor, so all day will be exposed to the highest sunlight exposure. On the other hand, after the end of the day and the impossibility of taking advantage of sunlight, the productive plates will turn to the opening and revolving mode in order to continue to be influenced by wind to save energy at night. Actually, converting solar panel to wind turbine with vertical axial.

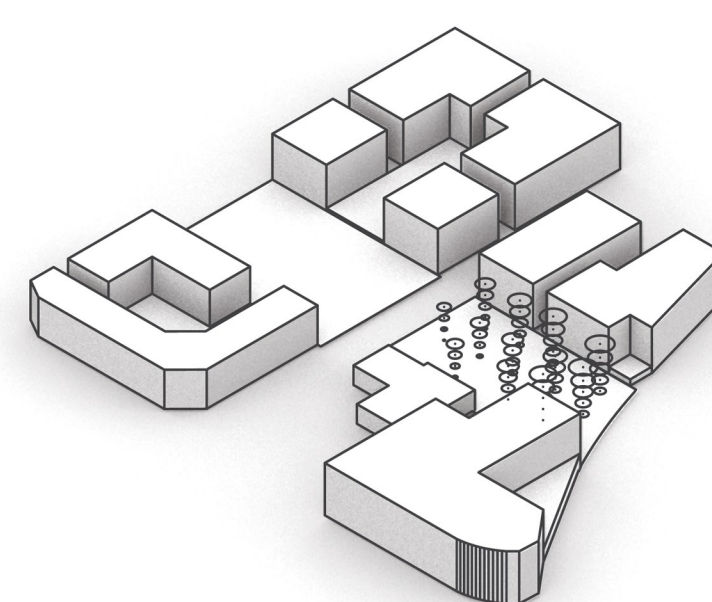
These plates are placed vertically on a holding structure at the right height, which is embedded around the vertical element of the energy storage. The level of energy storage on the external body is marked by luminous lines from top to bottom.



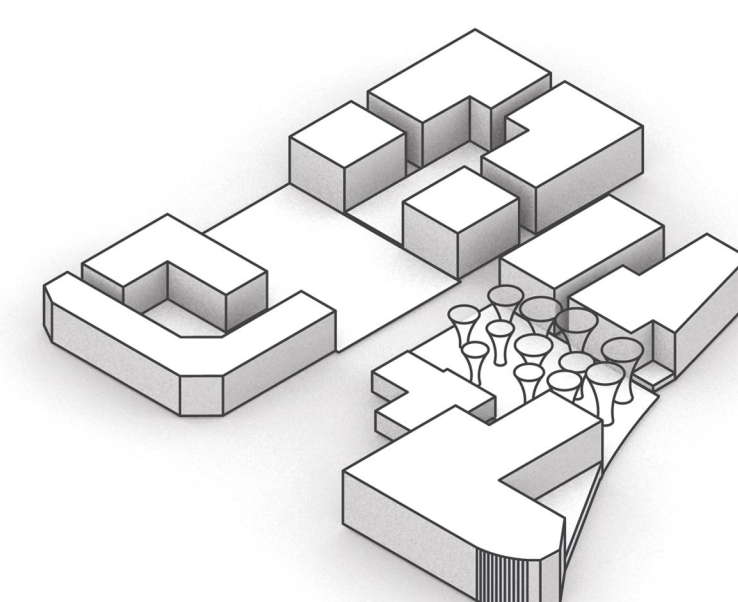
1. Annual sun analysing



2. Selecting the best nodes according to nearby



3. Grow up in height



4. Make it pan for sun radiation