

COLDNESS
A 10 TONNE RESERVOIR CAPACITATING 45,000 LITRES OF WATER IS COLLECTED FROM CONDENSATION RIGS

DRYNESS
30% OF THE WATER OBTAINED IS USED TO GENERATE STEAM THAT POWER THE EVAPORATION ENGINES

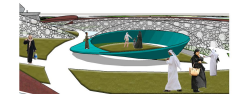
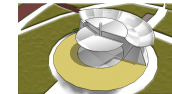
HUMIDITY
LANDSCAPED GARDENS ARE BEING SUSTAINED BY 20% OF THE COLLECTED WATER

WIND
WAVE SHELLS AND SERIES OF WIND CATCHERS INCREASE THE VELOCITY BY 3m/s TO SPIN THE TURBINES

HEAT
AERODYNAMICALLY DESIGNED IN THE FORM OF LARGE SPEAKERS CONSIST OF 25,000 SMALL ALUMINIUM FLAPS THAT ROTATE WHEN STEAM IS GENERATED FROM SURFACE THERMAL HEAT

HOTNESS
A SOLAR KITCHEN ACTIVATED BY CONCENTRATING SOLAR POWER (CSP) TECHNOLOGY GENERATES 75 KW/h, PRODUCING ENERGY TO COOK 100 WHOLE MEALS

TIME AND SPACE
A MOBIUS STRIP BASED ON A BUCKLING SELF-SUPPORTING STRUCTURE ACTS AS A SOCIAL GATHERING SPACE AND A SYMBOLIC REPRESENTATION OF WHAT TIME DOES TO SPACE



THE OVERLAPPING WAVE SHELLS CREATE FUNNEL SHAPED STREET CORRIDORS ALTERING WIND SPEEDS ACCORDING TO ITS DIRECTION



20% OF THE WATER COLLECTED FROM THE FOG CONDENSATION RIGS ARE USED TO HYDRATE THE LANDSCAPED AREAS

