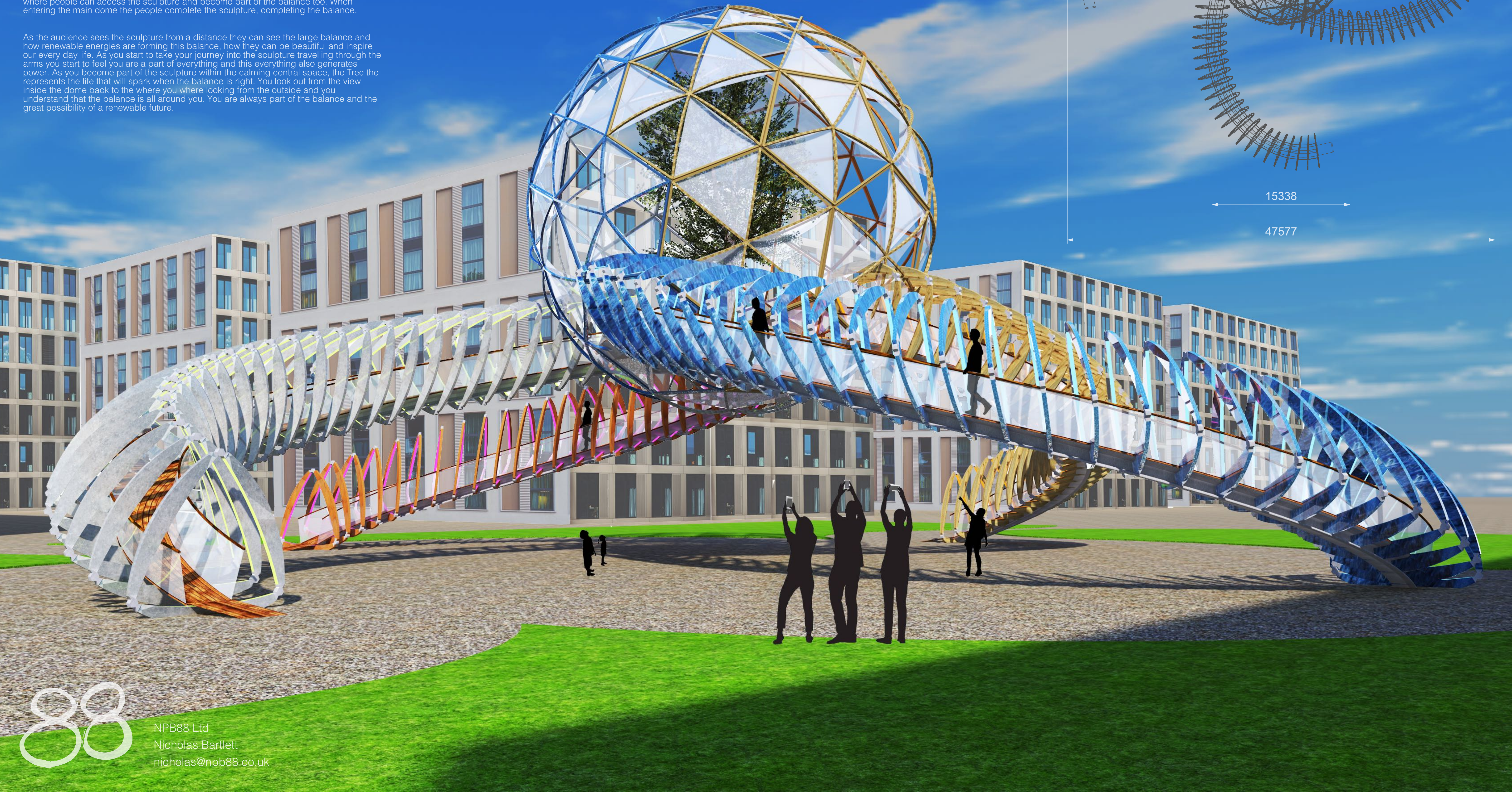
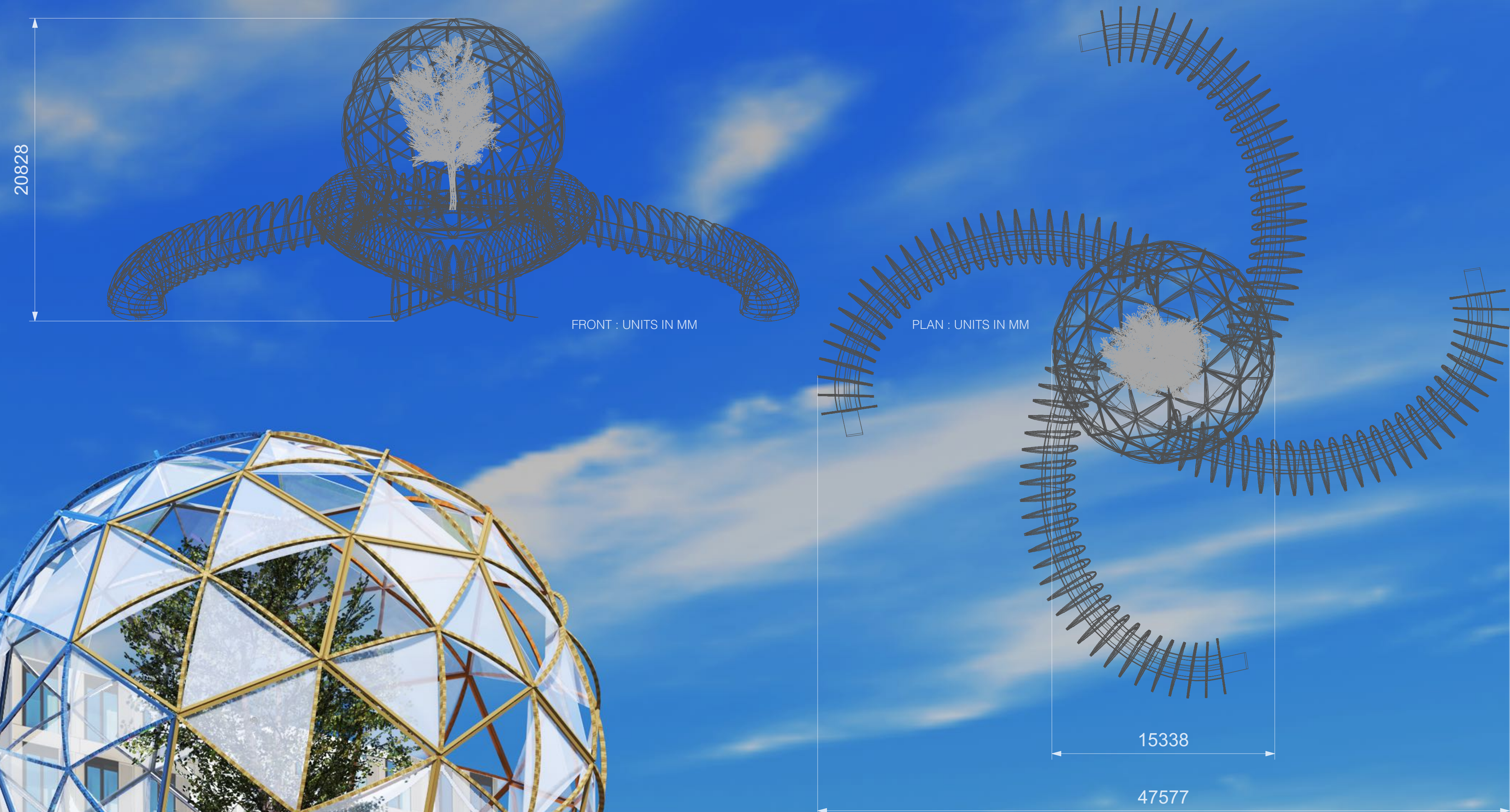


BALANCE

We are so used to the simple action of turning on the light switch or switching on the oven or our hairdryers. Just flip the switch and hey presto the appliance works with out any need for further thought. We have become detached from our tools and systems that allow our modern world to run. We are comfortable in the knowledge that the electricity we use comes from power stations somewhere out in the far distance. We find it easily convenient to disregard our connection to these vital life giving power sources. Deniable plausibility, when some thing is so far removed. Then people start to talk, the power source we have subconsciously been relying on turns out to be killing the very place we live. Balance looks to reintroduce us to our power sources, our lifelines in the modern age. However, this time it's part of an old wiser vision, where the world we live in is part of us and all around us. In balance with its self, as we are part of it, it is part of us.

The sculpture is a swirling vortex of the 4 base elements, fire, earth, water, air. Each is represented by one of the 4 arms. As the vortex spins and sucks in the elements it creates a perfect balance a sphere where all are equal and calm. Life grows in this central balance, represented by the live tree. Each arm has a walkway into the central dome where people can access the sculpture and become part of the balance too. When entering the main dome the people complete the sculpture, completing the balance.

As the audience sees the sculpture from a distance they can see the large balance and how renewable energies are forming this balance, how they can be beautiful and inspire our every day life. As you start to take your journey into the sculpture travelling through the arms you start to feel you are a part of everything and this everything also generates power. As you become part of the sculpture within the calming central space, the tree represents the life that will spark when the balance is right. You look out from the view inside the dome back to the where you where looking from the outside and you understand that the balance is all around you. You are always part of the balance and the great possibility of a renewable future.



NPB88 Ltd
Nicholas Bartlett
nicholas@npb88.co.uk