

Black Gold



The venue of the competition was Abu Dhabi, so I chose the ancient architecture of the Mesopotamia as the prototype. The fourth floor of the building is a glass pyramid, wrapped in two or three layers of solar panels, which absorbs solar energy during the day and drives the lighting system in the base at night.

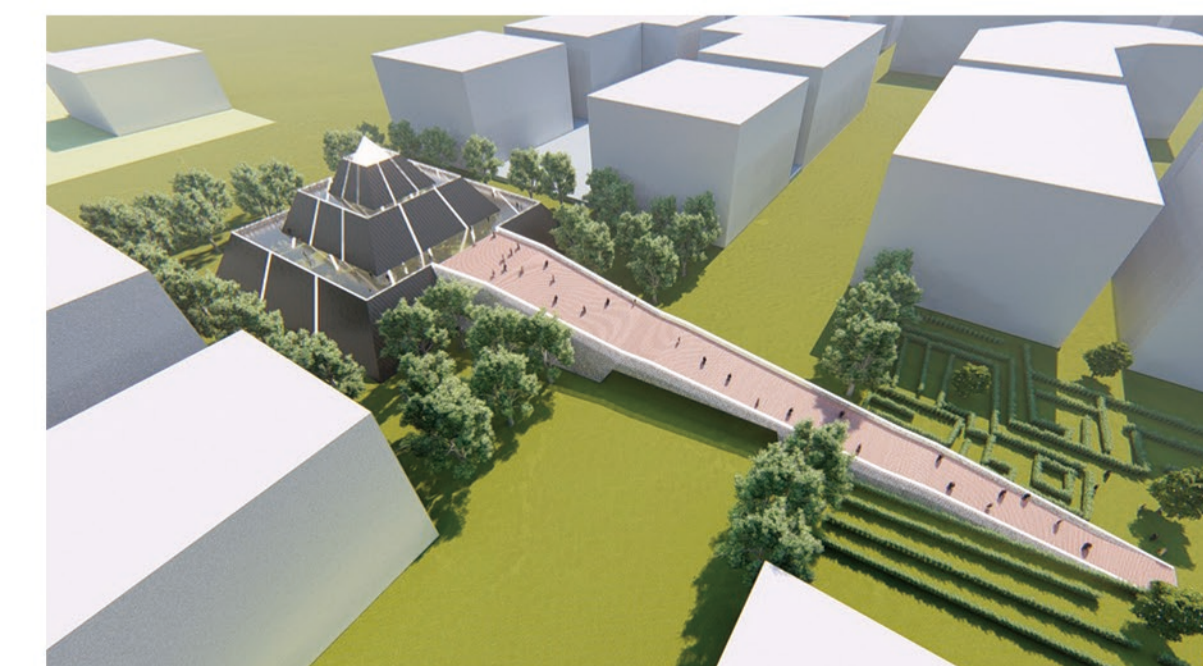
With regard to the long Shinto, I adopted Michelangelo's road design in the Cabindo Hill Municipal Square. Using the law of perspective, the people entering the Shinto felt that the Shinto was not a long illusion. The interior of the building was a botanical garden, and the exterior of the building was made of glass.



Ancient people worshipped celestial bodies, while mountain terraces were traditional religious buildings in the Mesopotamia. People hoped that they could approach celestial bodies more closely through high terraces and pray to the heavens.



Pyramid is the most famous building in ancient Egypt, with a magnificent volume, with its concise shape to bring a strong memorial.



The design combines the advantages of two ancient buildings, changes the traditional buildings of the two river basins, simplifies the body, lengthens the Shinto in the middle, cancels other Shintos, and the Shinto in the middle can also be used as an active area.