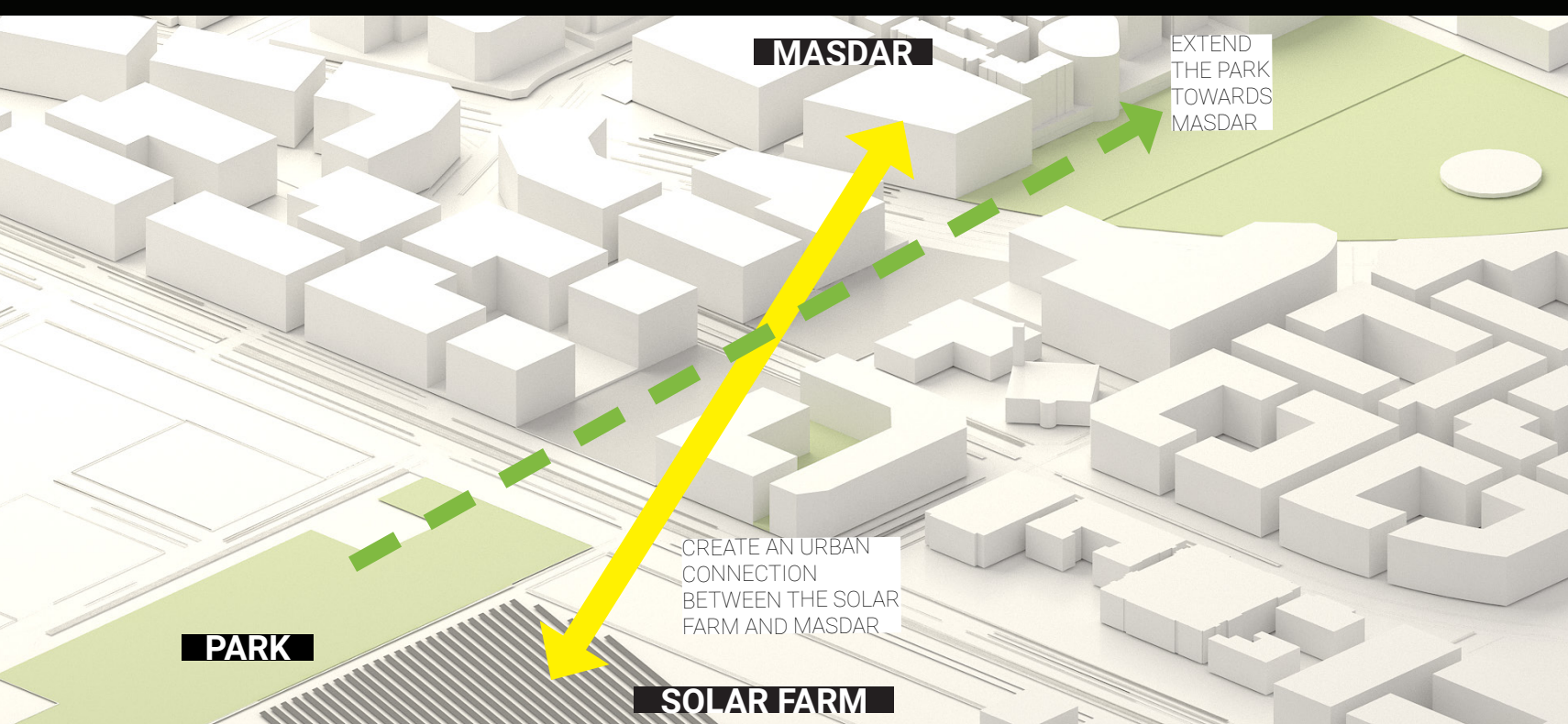
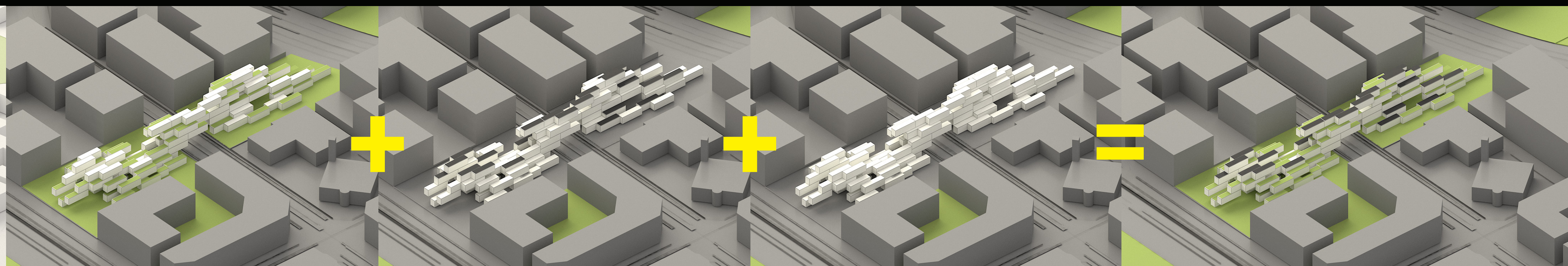


# BIOSOLAR ESPLANADE

THE BIOSOLAR ESPLANADE IS AN INFRASTRUCTURAL PIECE OF ART AND ELEVATED URBAN PARK. IT AIMS TO CREATE A UNIQUE HUMAN EXPERIENCE IN RELATION TO SUSTAINABLE TECHNOLOGY BY BEING A PLACE THAT VISITORS CAN EXPERIENCE INSIDE AND OUT. THE MAIN DESIGN APPROACH IS AN URBAN ONE THAT ATTEMPTS TO MELD THE BUILT URBAN ENVIRONMENT AT MASDAR WITH THE EXISTING PARK AND SOLAR FARMS TO CREATE A MORE COHESIVE URBAN FABRIC. THE TECHNOLOGY USED IS MADE UP OF BIOSOLAR TERRACED ROOFS WITH INTEGRATED THIN FORM BATTERY STORAGE IN THE STRUCTURE. INTENTIONALLY INTEGRATING THE TECHNOLOGY AND MAKING IT VISIBLY PART OF THE STRUCTURE ENGAGES VISITORS IN THE STORY OF MASDAR, THE MOST SUSTAINABLE CITY IN THE WORLD, AND THE STORY OF HUMANITY'S TRANSITION TO A 100% RENEWABLE FUTURE.



EXISTING SITE



GREEN SPACE

SOLAR FARM

ENERGY STORAGE

BIOSOLAR ESPLANADE