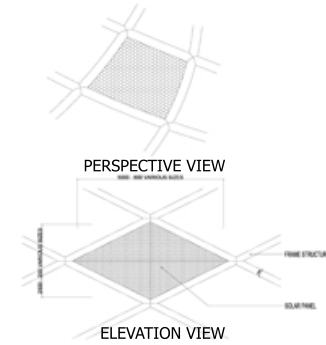
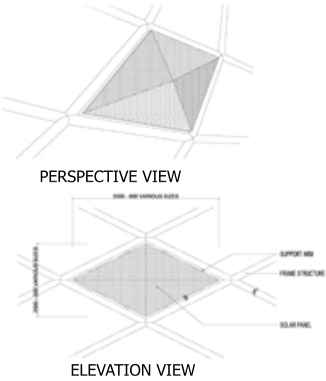
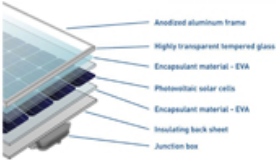


TECHNOLOGY AND MATERIAL USED

PHOTOVOLTAIC SOLAR PANEL

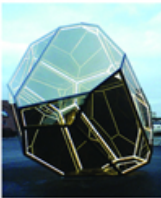
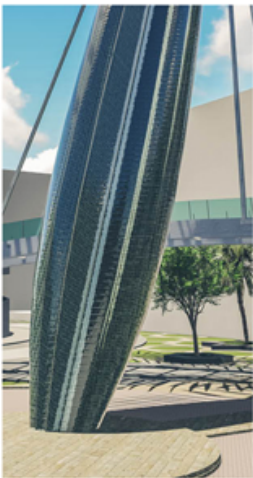


FLEXIBLE PV SOLAR PANEL

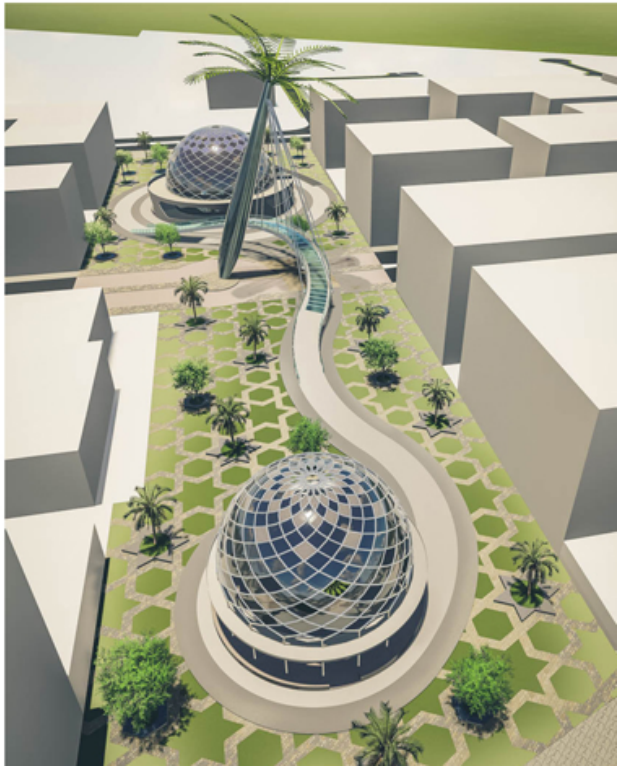
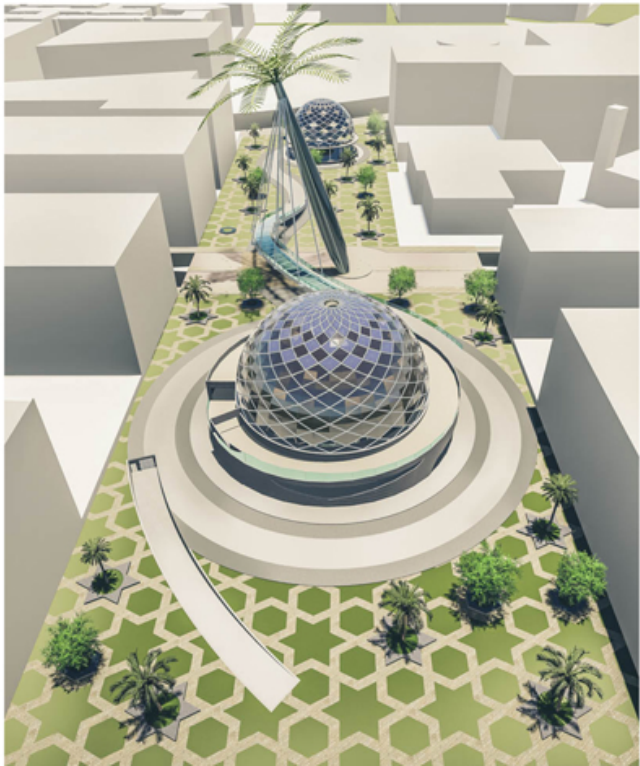
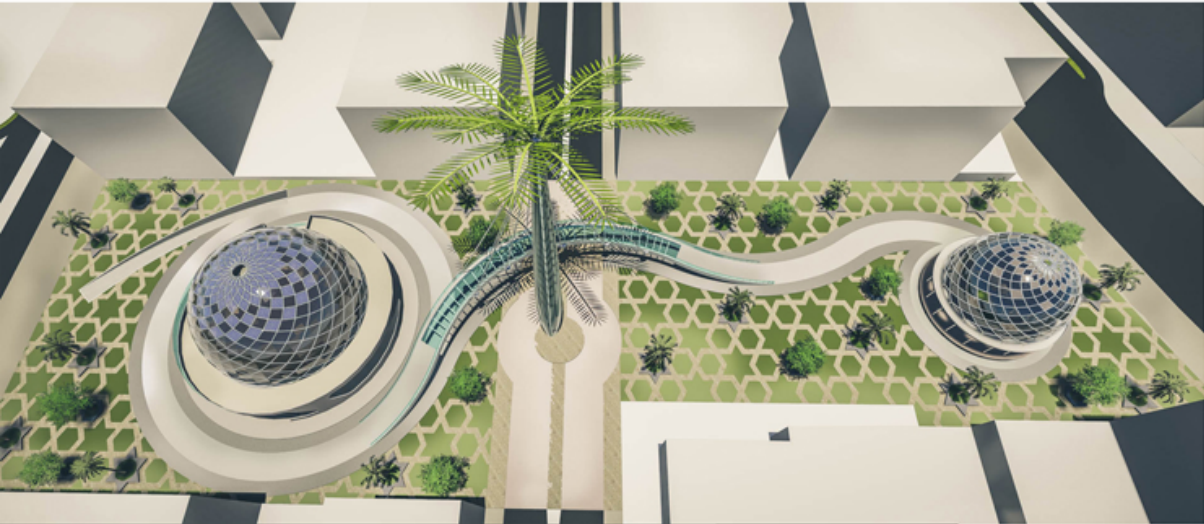
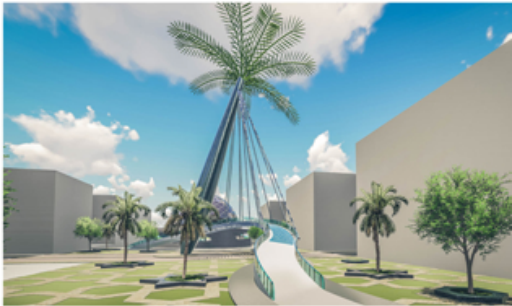
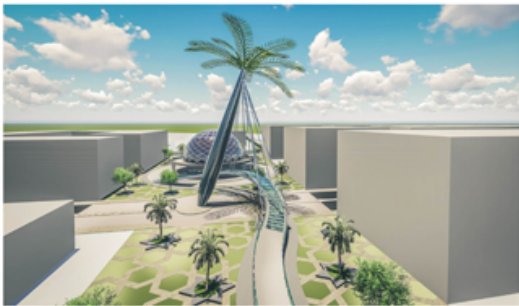
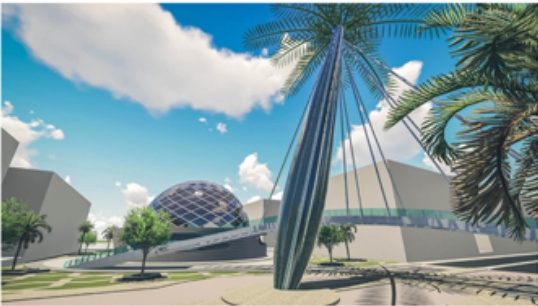
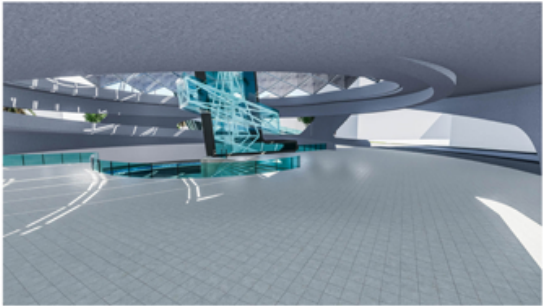
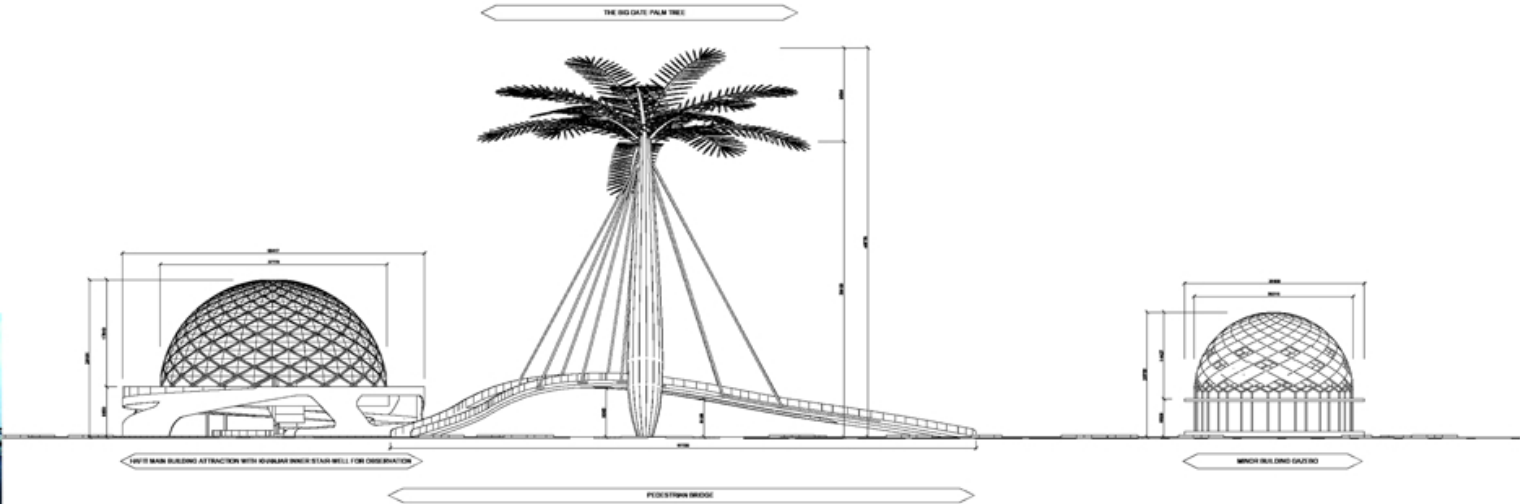


PHOTOVOLTAIC SOLAR PANELS ABSORB SUNLIGHT AS A SOURCE OF ENERGY TO GENERATE ELECTRICITY. A PHOTOVOLTAIC (PV) MODULE IS A PACKAGED, CONNECTED ASSEMBLY OF TYPICALLY 6X10 PHOTOVOLTAIC SOLAR CELLS. PHOTOVOLTAIC MODULES CONSTITUTE THE PHOTOVOLTAIC ARRAY OF A PHOTOVOLTAIC SYSTEM THAT GENERATES AND SUPPLIES SOLAR ELECTRICITY

GLASS DATE PALM TREE



GLASS DATE PALM SCULPTURE TREE WITH NEON LIGHTS



THE BIG DATE PALM GARDEN