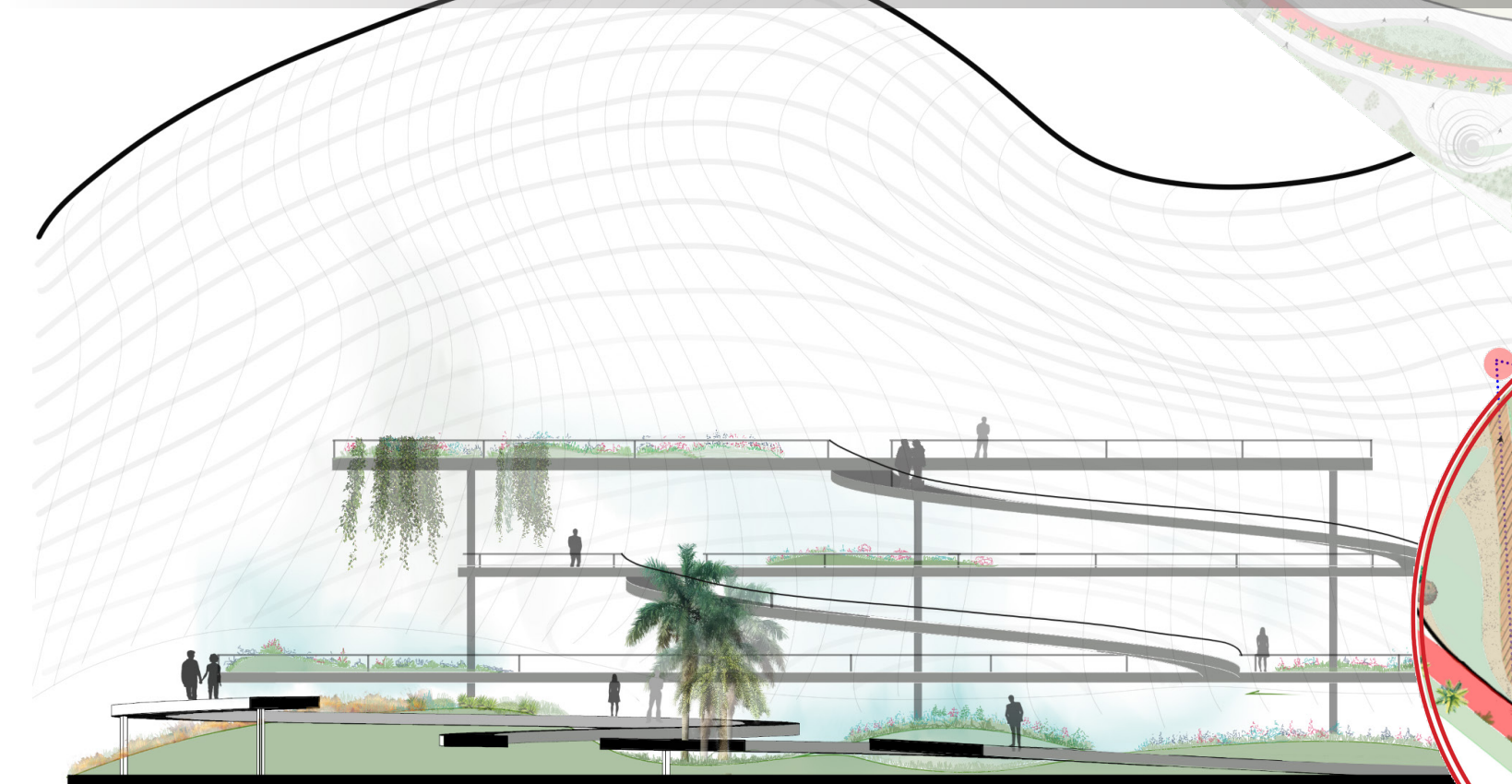
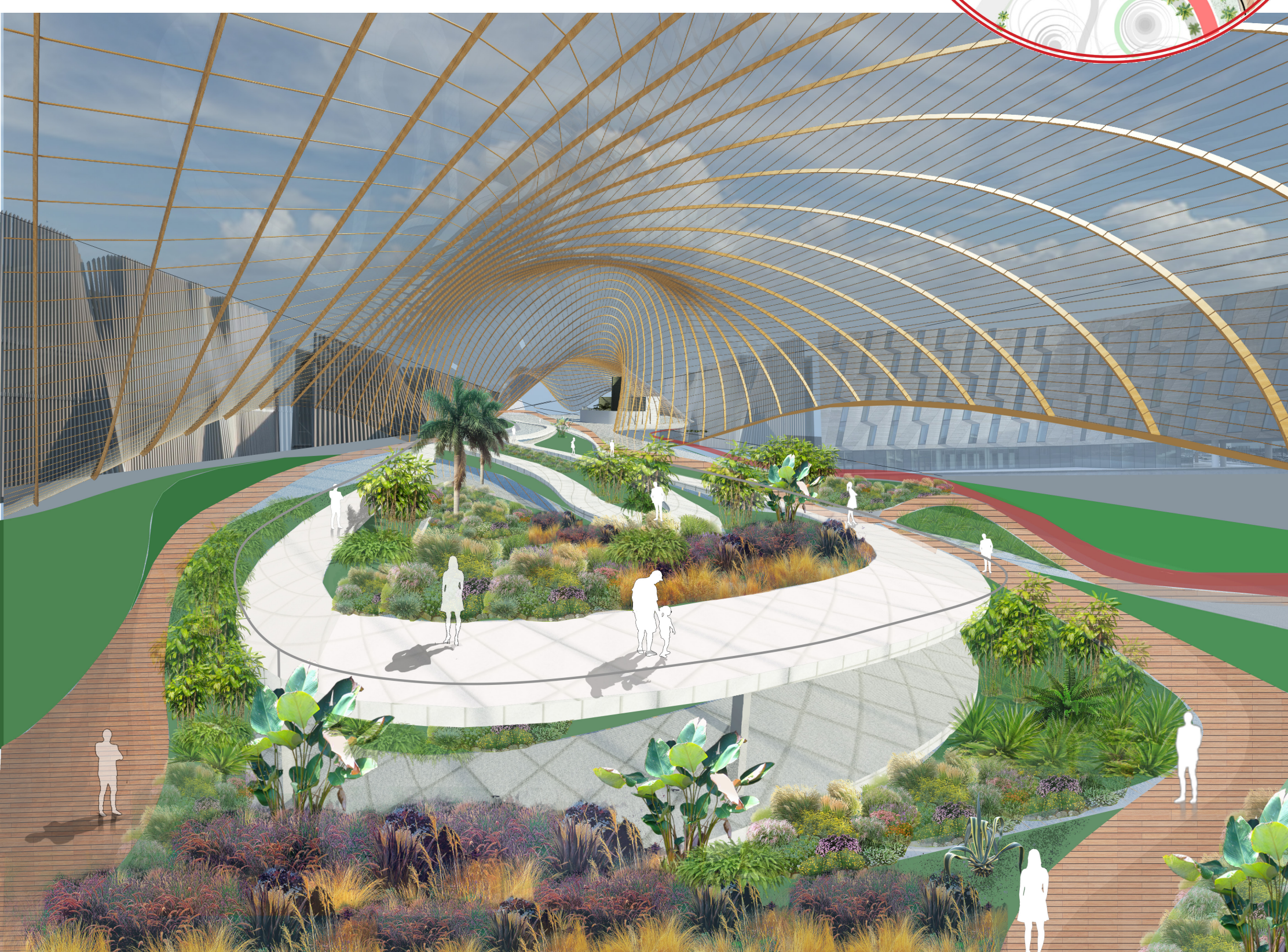


BIOPHILIC SKYLIGHT

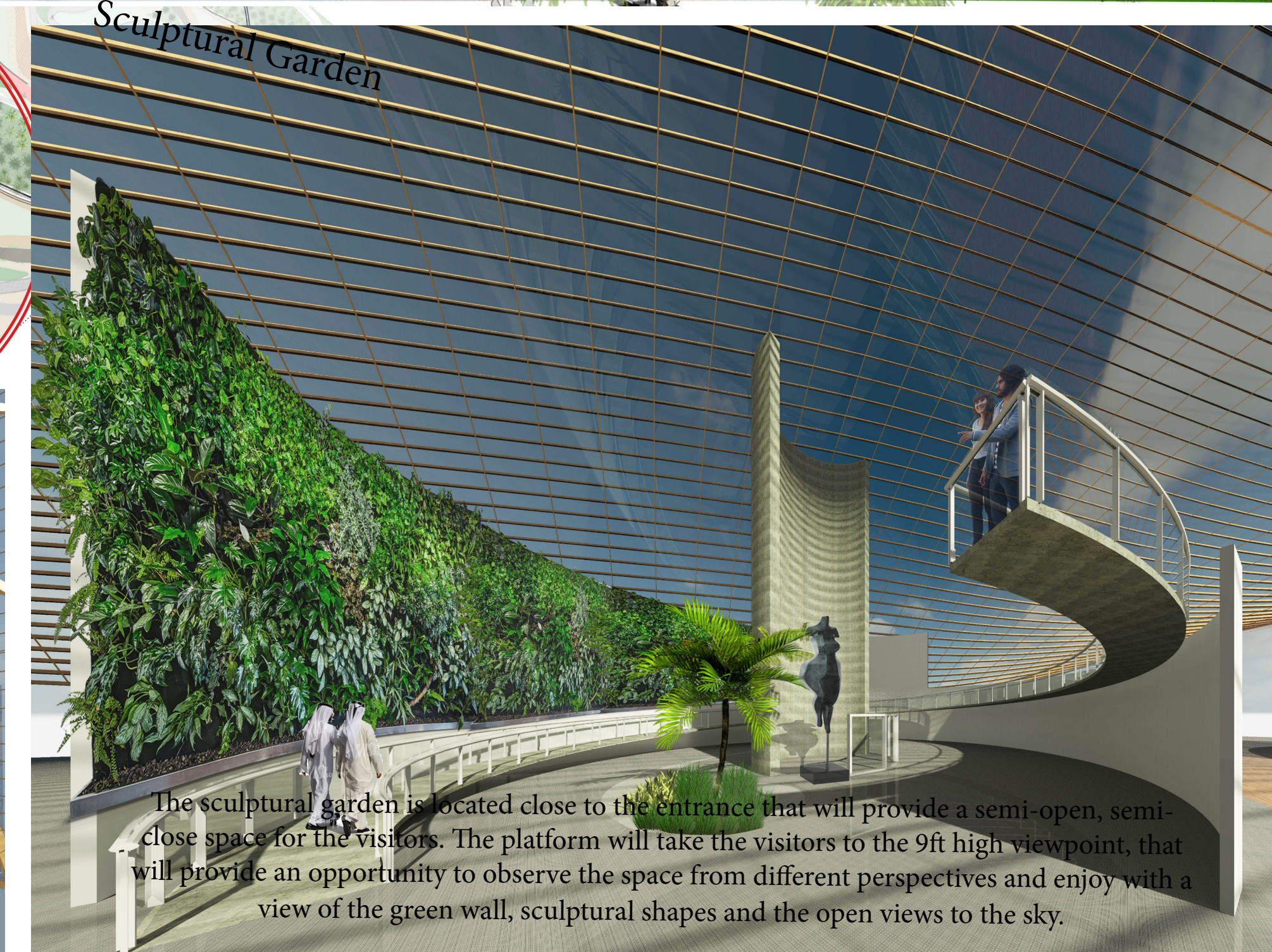


Indoor Botanic Garden. Section A-A.



The main goal of designing indoor botanic garden is to connect visitors with nature and by providing different level platforms they will have a possibility to observe nature from a different perspective. Around the indoor arboretum, the photovoltaic structure is open in both sides that will provide a secondary circulation from the residential and light industrial zones.

The plant selection of arboretum includes: Date palm, *Limonium stocksii*, *Aristida mutabilis*, *Frangipini*, tropical hibiscus, *verbesina encelioides*, Limon trees, Orchid species, bromeliad species, *Rhipsalis* species, Yellow trumpet flower, *Arta*, *neomarica gracilis* etc.



Plant Selection

Safravi	<i>Dipterogium glaucum</i>		<i>Philodendron</i>	
Arfa	<i>Rhantierum epposum</i>		<i>Spathiphyllum culti vars</i>	
Anaaj	<i>Lycium shawii</i>		<i>*Xanadu/Moniera</i>	
Arta	<i>Calligonum comatum</i>		<i>cultivars Schlefera</i>	
Desert lilycynth	<i>Cistanche tubulosa</i>		<i>Chlorophyllum comatum</i>	
Cornulca moncautha	<i>Genus Cornulca</i>		<i>Papernia species</i>	
Shuntup	<i>Pentstemonis stivalis</i>		<i>Rhipsalis species</i>	
Tropical hibiscus	<i>Hibiscus rosa-sinensis</i>		<i>Bromeliad species</i>	
Yellow trumpet flower	<i>Tecoma stans</i>		<i>Orchid species</i>	
Frangipani	<i>Plumeria</i>		<i>Epigremnum species</i>	
Bougainvillea			<i>Plectranthus ciliatus</i>	
Date palm	<i>Phoenix dactylifera</i>		<i>Aceron granitum</i>	
Flame tree	<i>Dalotia Regia</i>		<i>Dietes species</i>	
<i>Aristida mutabilis</i>	<i>Poaaceae</i>		<i>Pictia nodosa</i>	
<i>Boerhavia erecta</i>	<i>Nyctaginaceae</i>		<i>Arthropodium cirratum</i>	
<i>Limonium stocksii</i>	<i>Primulaginaceae</i>		<i>Purua/Arthropodium</i>	
<i>Verbesina encelioides</i>	<i>Asteraceae</i>		<i>Neomarica gracilis</i>	



Childrens Place

The harmonic wooden structure that mimics the flow of the main structure provides a cooler atmosphere and shade for children to play. Moreover, the entire shelter will be used to grow hanging plants and provide a playable, biophilic, safe, and fun atmosphere for children.