

# REFLECTION

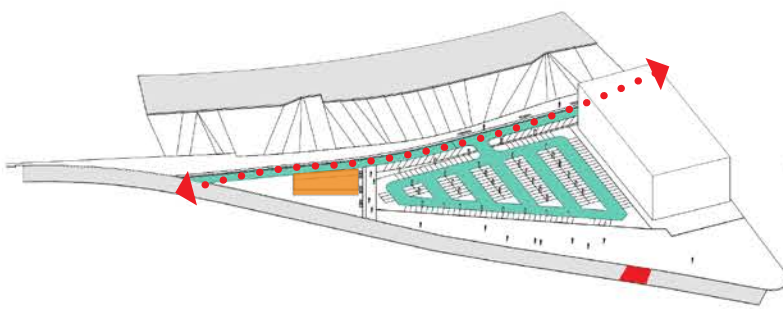
## CONCEPT

st kilda is known for being a center for culture and home to art, music and entertainment. the objective of the project is to add the site to the list of attractions such as luna park, acland and fitzroy street. the site provides a unique location imbedded in a rich urban surrounding with a heavy connection to the foreshore.

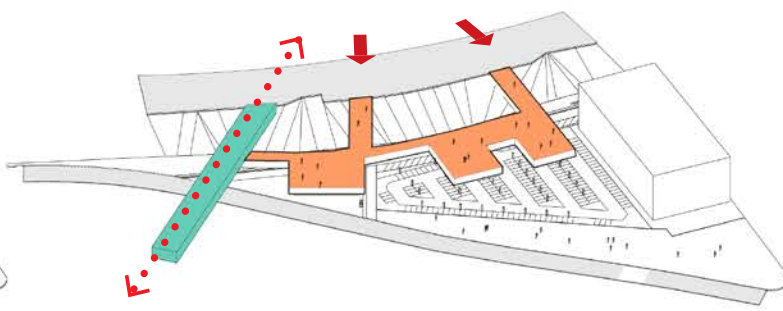
nature is the source of energy and has always been the subject of beauty and excitement, a master of creating intriguing spaces such as the 12 apostles, gibson steps and loch ard gorge. within this context the concept was to develop an artistic approach to the expressions of nature,creating a language between energy, st kilda and nature.

the structure volumes were subjected to natural weathering agents such as wind, erosion, rain and heat. Fast forwarding millions of years, creating art as if it was carved by of nature, a chaotic spatial volume inside man made boundaries.

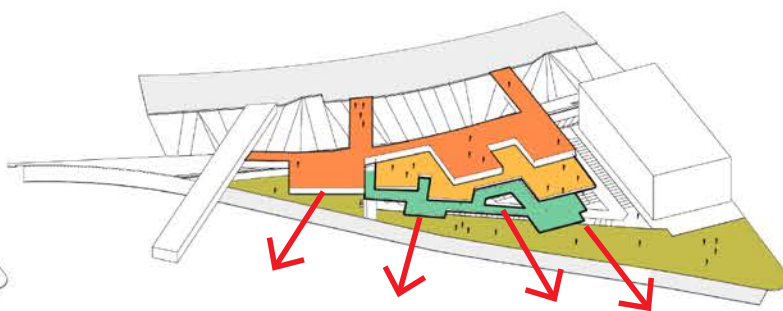
## SITE DEVELOPMENT



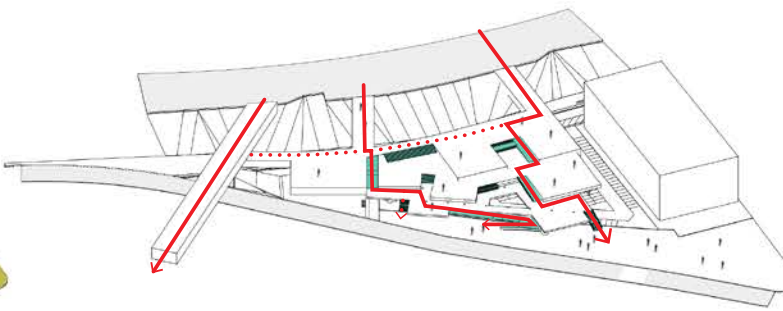
**PARKING LEVEL**  
Parking space for 230 cars and battery storage building below grade while preserving the lower esplanade and creating a pedestrian crossing .



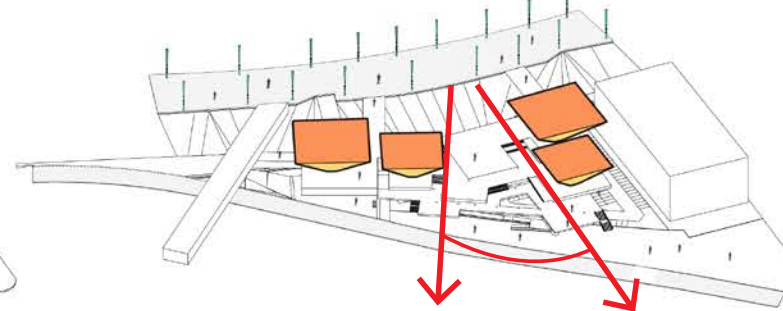
**ACCESS POINTS**  
Creating access points and connecting the esplanade and the foreshore with a crossing bridge.



**LANDSCAPE**  
Expanding the balcony and creating a terraced landscape to maximize visual connection to foreshore.



**CIRCULATION**  
Circulation across the site and adding seating steps making the entire site a viewing platform.



**ENERGY**  
Energy systems and leaving a clear viewing range in the middle of the site without any obstacles.

## DESIGN

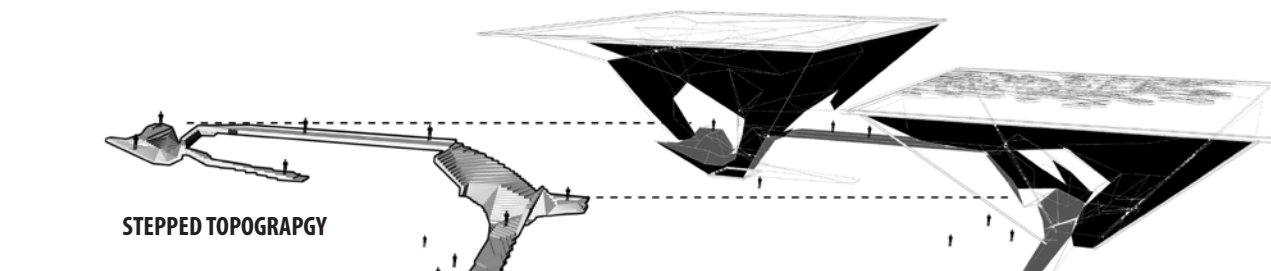
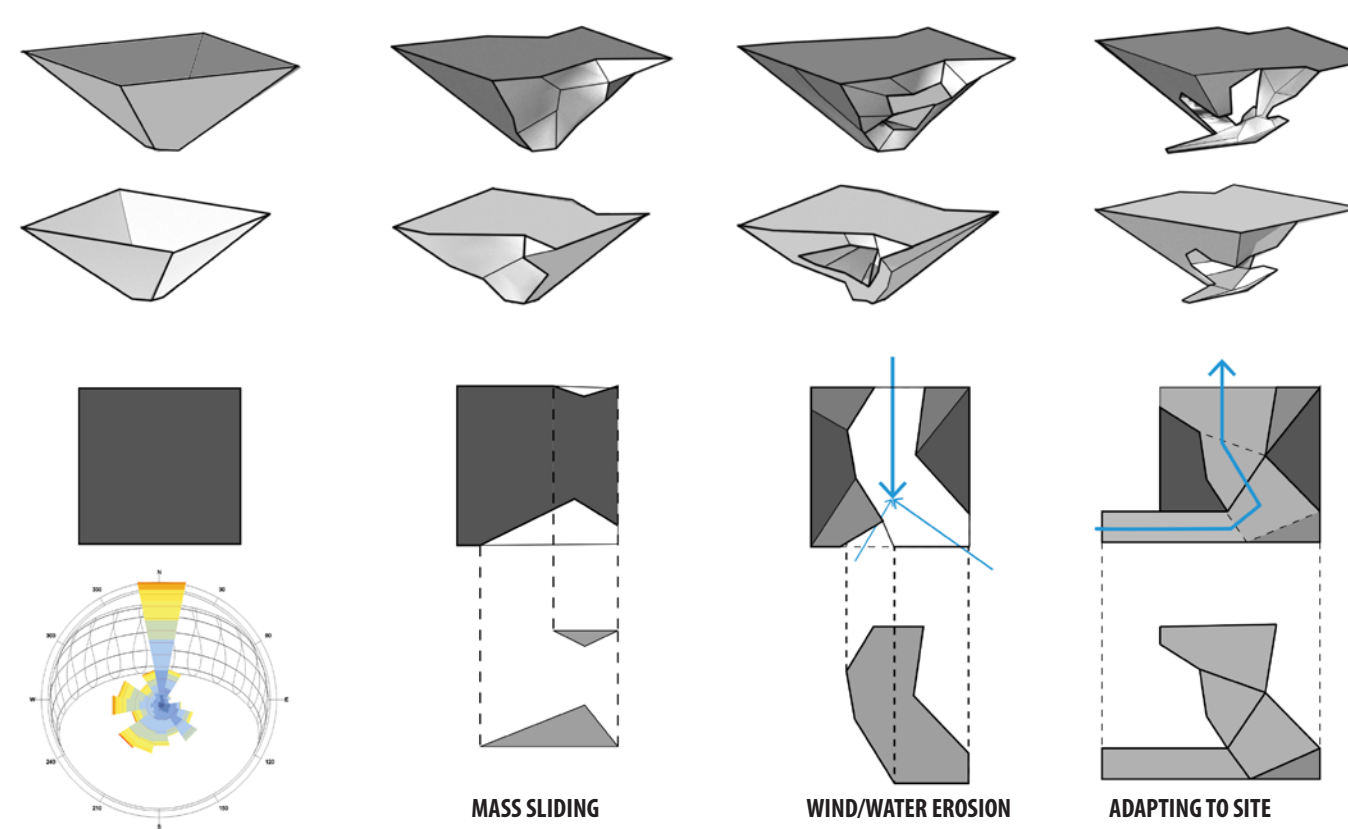
Several key points were taken into count for the design.

1. Maintaining view from the esplanade to the foreshore.
2. Ease of access through the site and over Jacka Boulevard.
3. Generating clean energy.
4. Respecting the surrounding urban context.
5. Creating a unique destination and providing an exciting experience during the day and night.

First the esplanade balcony was expanded and terraced creating a sloped platform giving an open view to the foreshore. Two access points to the foreshore were created; one directly from the esplanade through a crossing bridge, And the second from a pedestrian crossing on Jacka Boulevard.

The solar energy systems are lifted 15m above ground and the base dimensions are minimized to clear as much view as possible. The structure consists of four steel columns around the corners and a triangular steel grid which holds plexi glass panels. This is placed on top of an RC base that runs through the parking level. Four modules are placed near the edges of the site, leaving a clear view range from the esplanade.

## FORM DEVELOPMENT



STEPPED TOPOGRAPHY