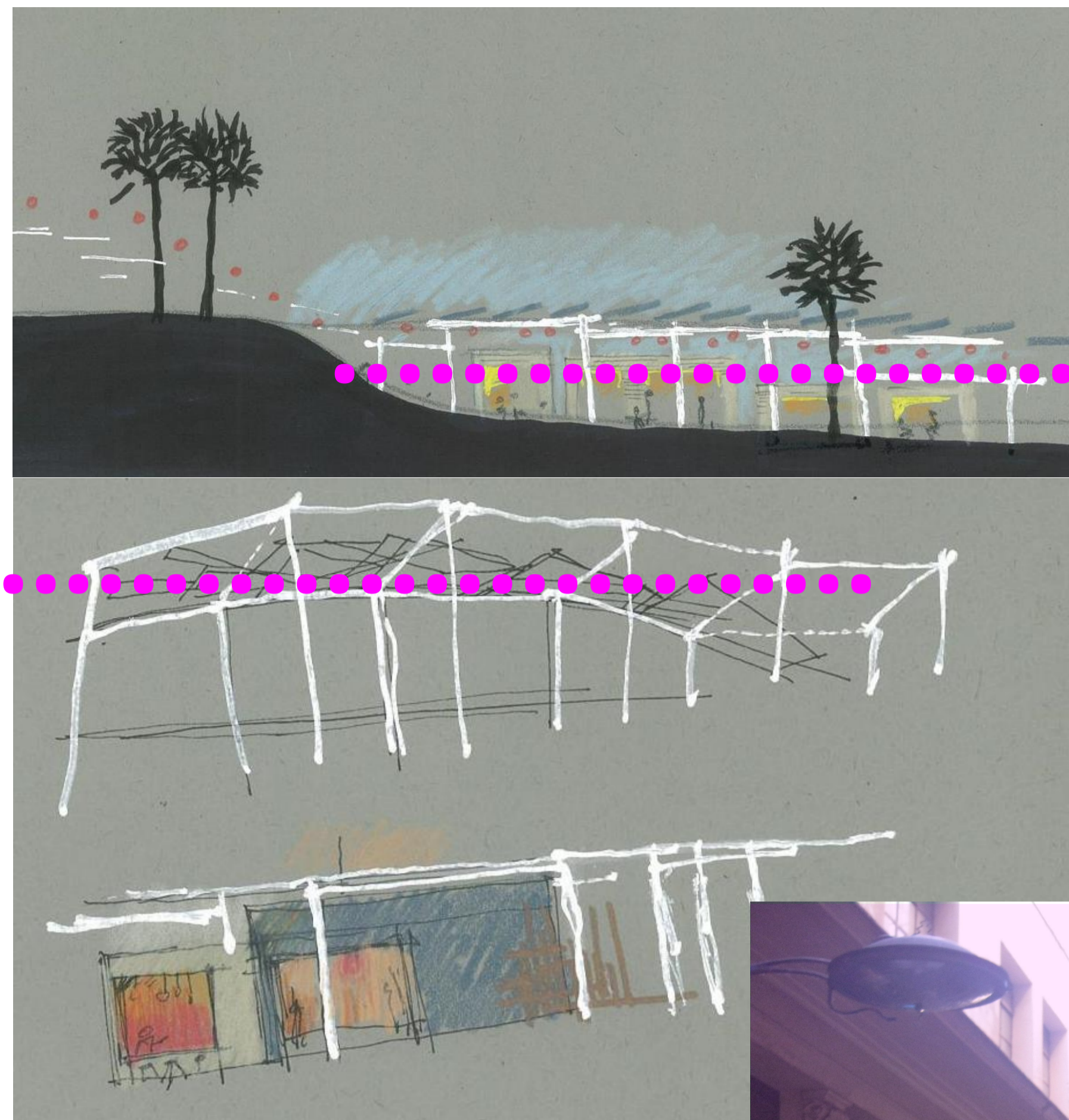
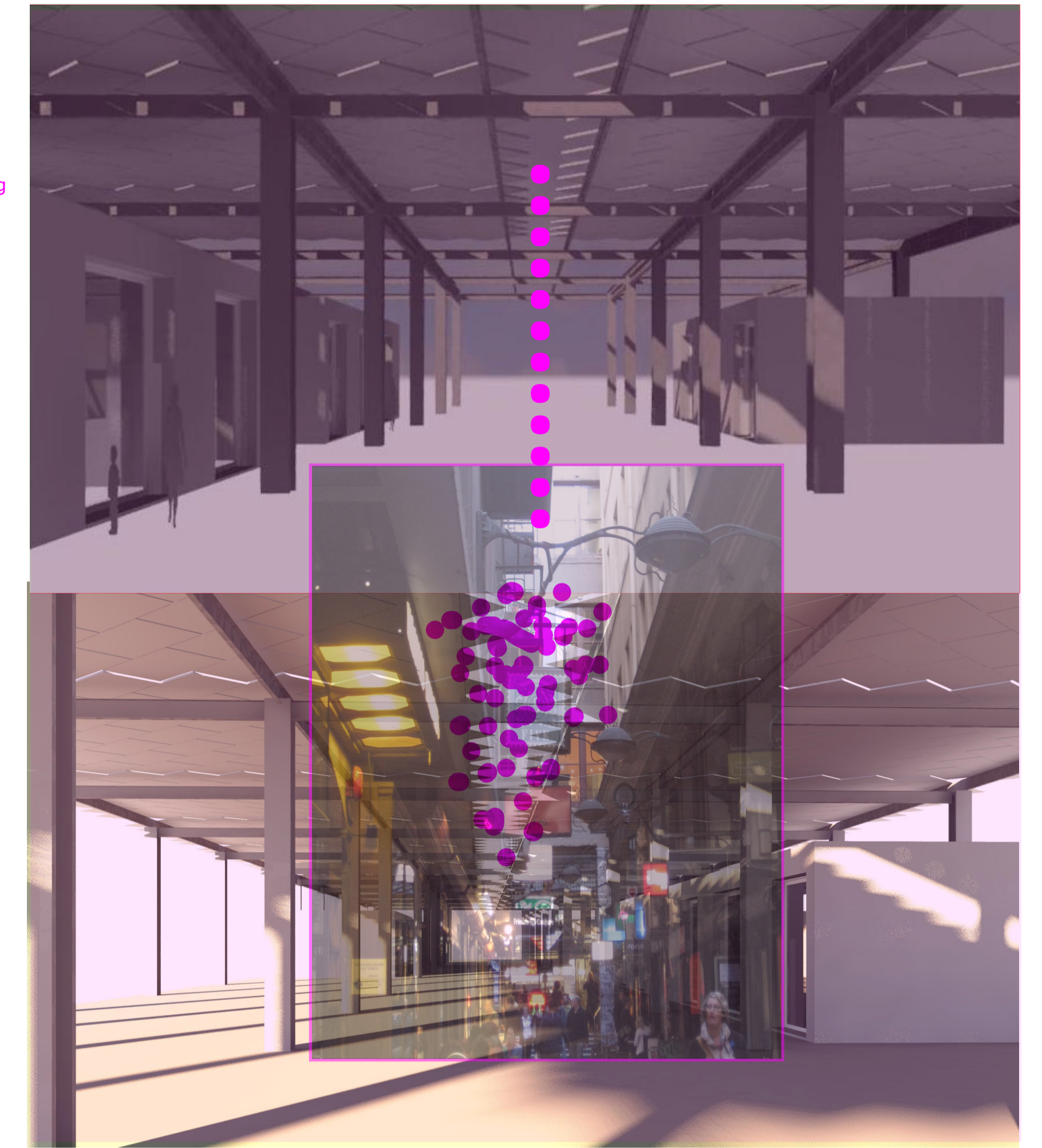


solar feathers



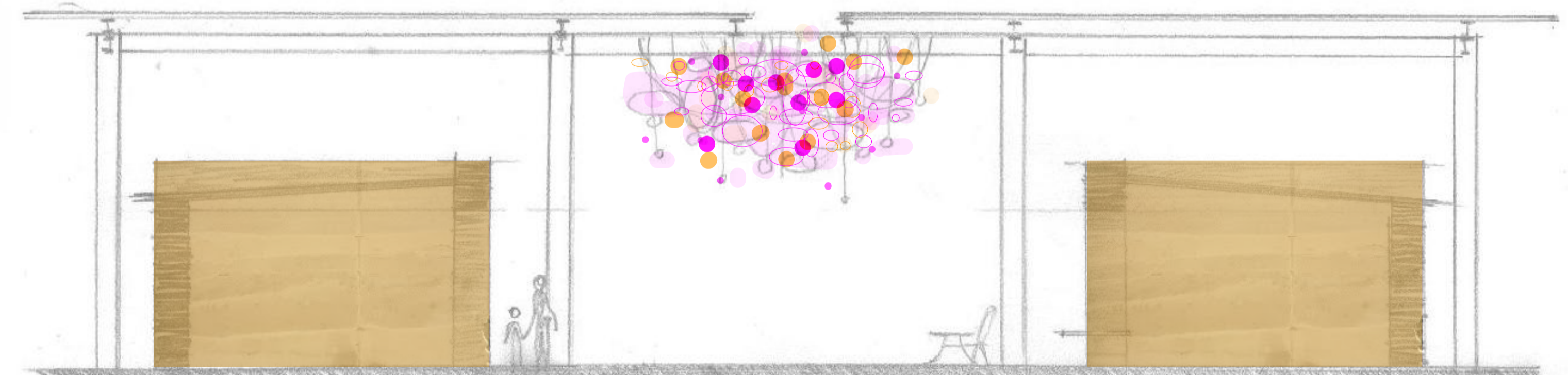
Link the life of Acland Street to the shore, using a continuation of the lighting. Leave views and lawn between the canopies.



Long slender arcs in plan - shade and shelter, with solar panels on top, connecting the vibrant town with the shore
Steel structure with 196 x 99 panels in herringbone feather pattern.



Distinctive lighting along the shaft



Rammed earth cabins below, sized to incubate small laneway businesses and temporary vendors.



New laneway infrastructure and a home for the local market. Distinctive lighting for the feather shafts.