



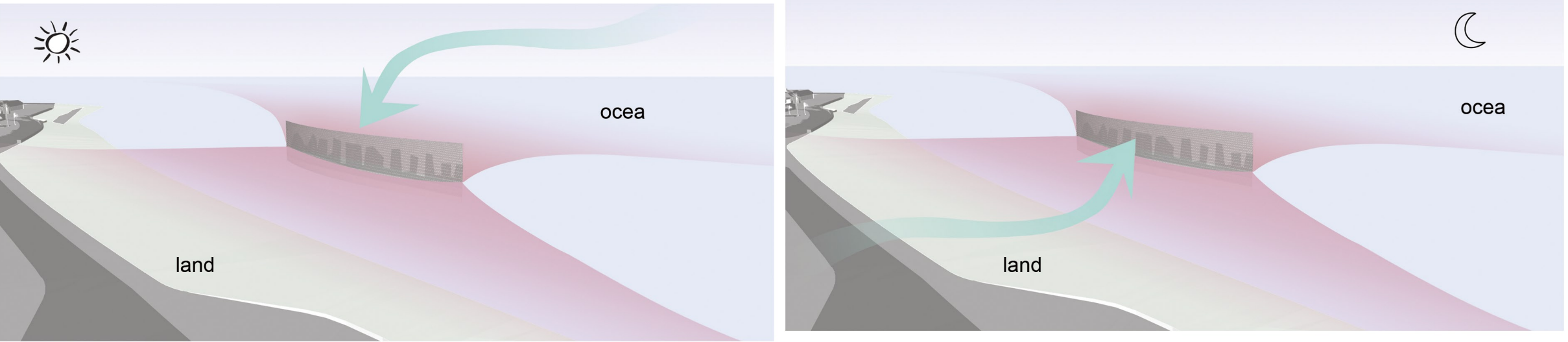
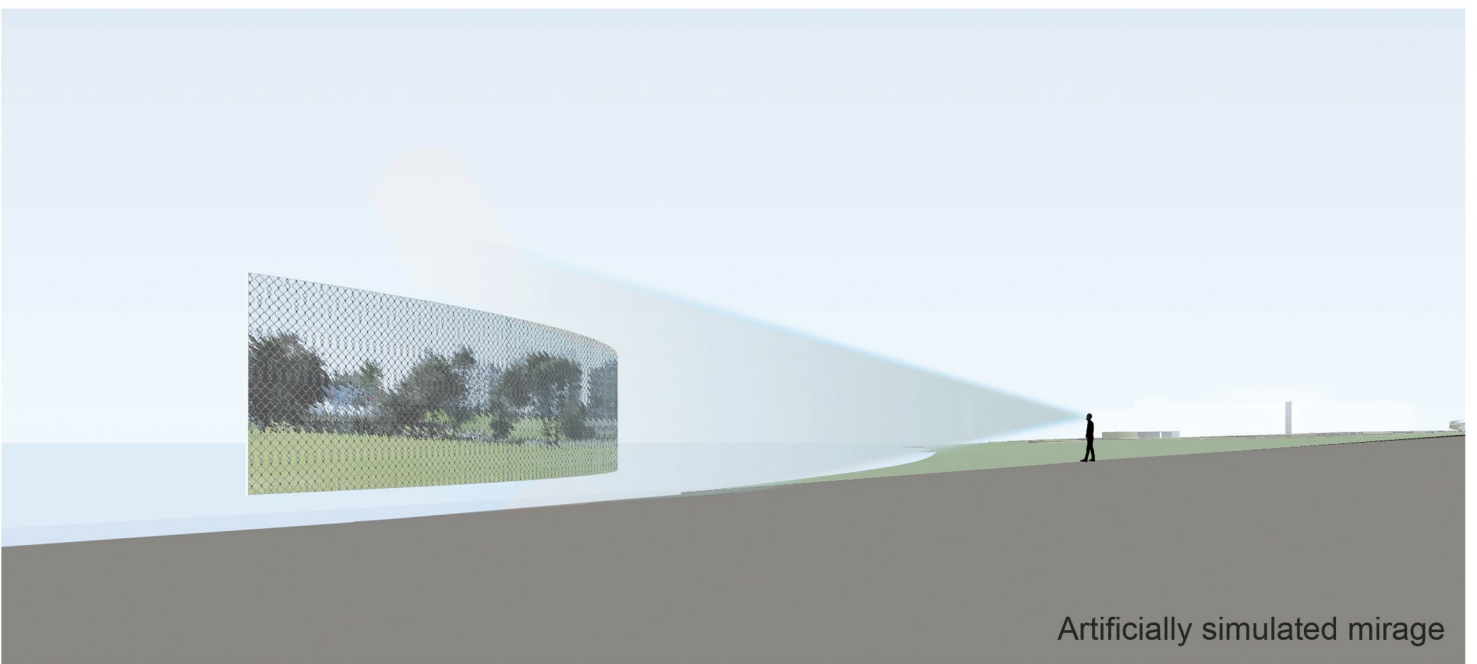
Art of Wind

Rebuild the Melbourne coastline

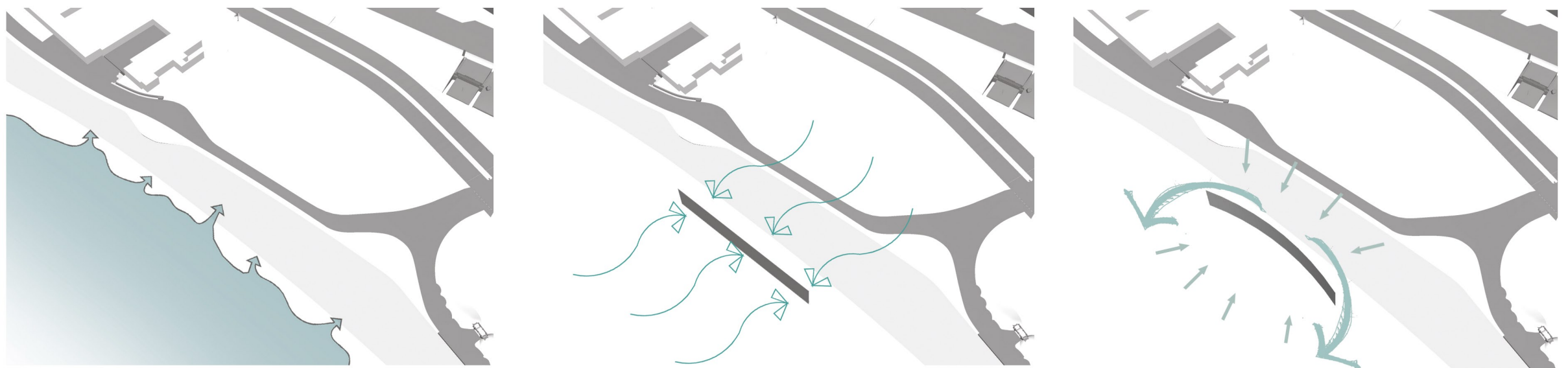
When we see the sea, we sometimes find distant cities and mountains like a huge art work. This is the natural deconstruction of the environment. Although each person has different views on art, different ways of understanding satisfy people's personality needs. We think about how to deduce the generation of energy and its relationship with the environment in a complex field, stimulate people's interest, tell the essence of the generation of clean energy, encourage and promote and respond to the goal of Melbourne's plan to achieve zero carbon emissions in 2020.

Our goal is to respect ST KILDA beach under the existing historical environment, make the appropriate response into the existing environment at the same time to form a new marker and a visual focus, which can drive it when walking on the long coastline can have different aesthetic feeling, like a mirage general, can inspire to the environment and their own thinking.

Ocean itself contains a huge amount of energy, the coast is the product of two sea and land forces, we in view of the coastline project base, puts forward a realistic and abstract art interaction of the conceptual art device like a mirage, through the form of lens distortion, the city and the ocean from reality, to form a utopian vision, and is trying to art and the sources of energy, projects and establish a direct dialogue and relations between people.



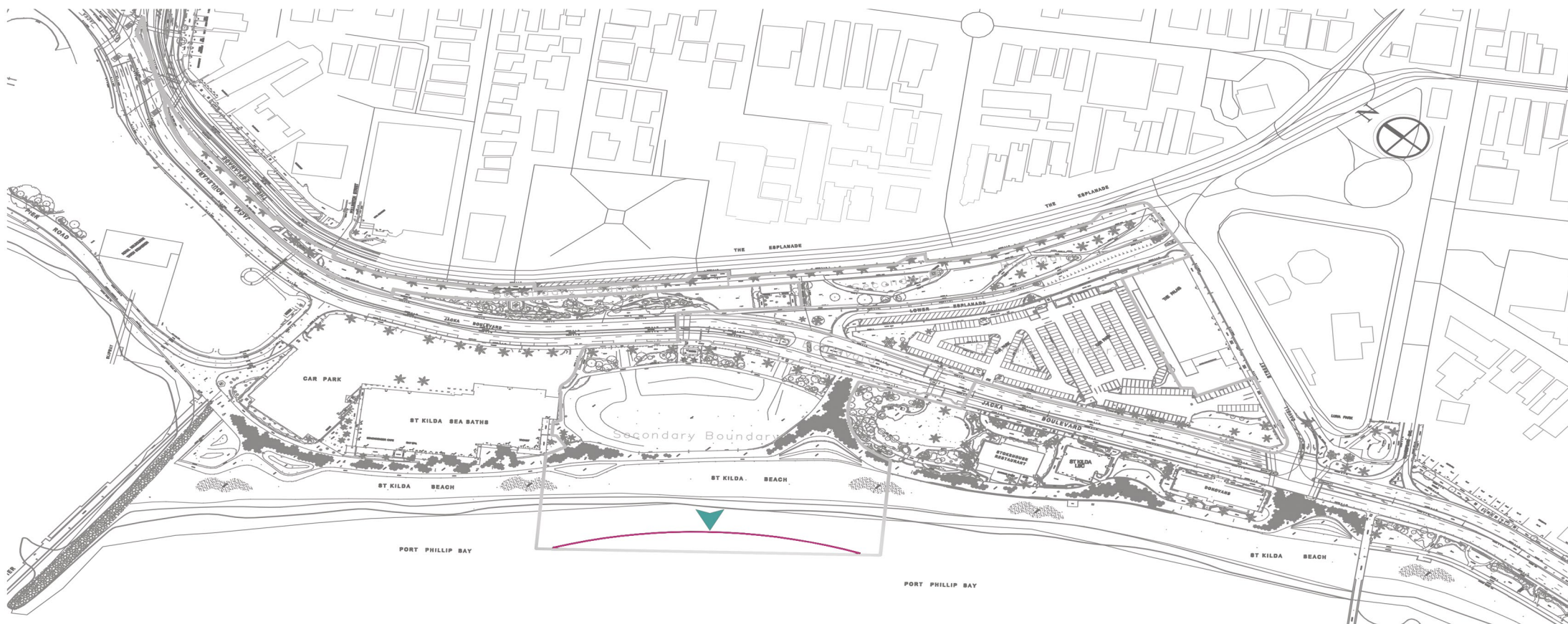
Due to the influence of the cold wind from the Indian Ocean at the same time, the weather conditions in Melbourne where the temperature difference is large (more than 10° C) are more common, resulting in a specific heat tolerance of the ocean and land. Therefore, in the daytime, when the land temperature is higher than the seawater temperature, the air will flow from the ocean to the land. At night, the seawater temperature is higher than the land temperature, and the air flows from the green land to the sea. With this phenomenon, the water can be continuously and continuously



The cold wind from the India ocean brings unique climatic characteristics to Melbourne. The great temperature difference between the day and night of this climate contributes to the formation of persistent wind energy.

We set up a reflective wall on the coastline to interact with the environment and receive wind energy from the cross-impact of the ocean and land.

The curved structure can gain stability in the vagaries of wind and waves, and maximize the reception of landscape and kinetic energy from the ocean and land and convert it into art and clean energy.



Design

From the plane, draw an arc along Melbourne's long coastline. On the facade, it is a dynamic abstraction consisting of series of vertically rotating twisted modular wind power blades that look like pearl necklaces or curtains, creating a surreal vision that flickers and changes. Experience. Through the reflection film on the blades of wind power generation, the scenery of Melbourne's coast was removed from the reality, reconstructing the beautiful scenery of the Melbourne coastline, and forming a monumental spatial vocabulary, which gave the people who watched it a wonderful visual experience

