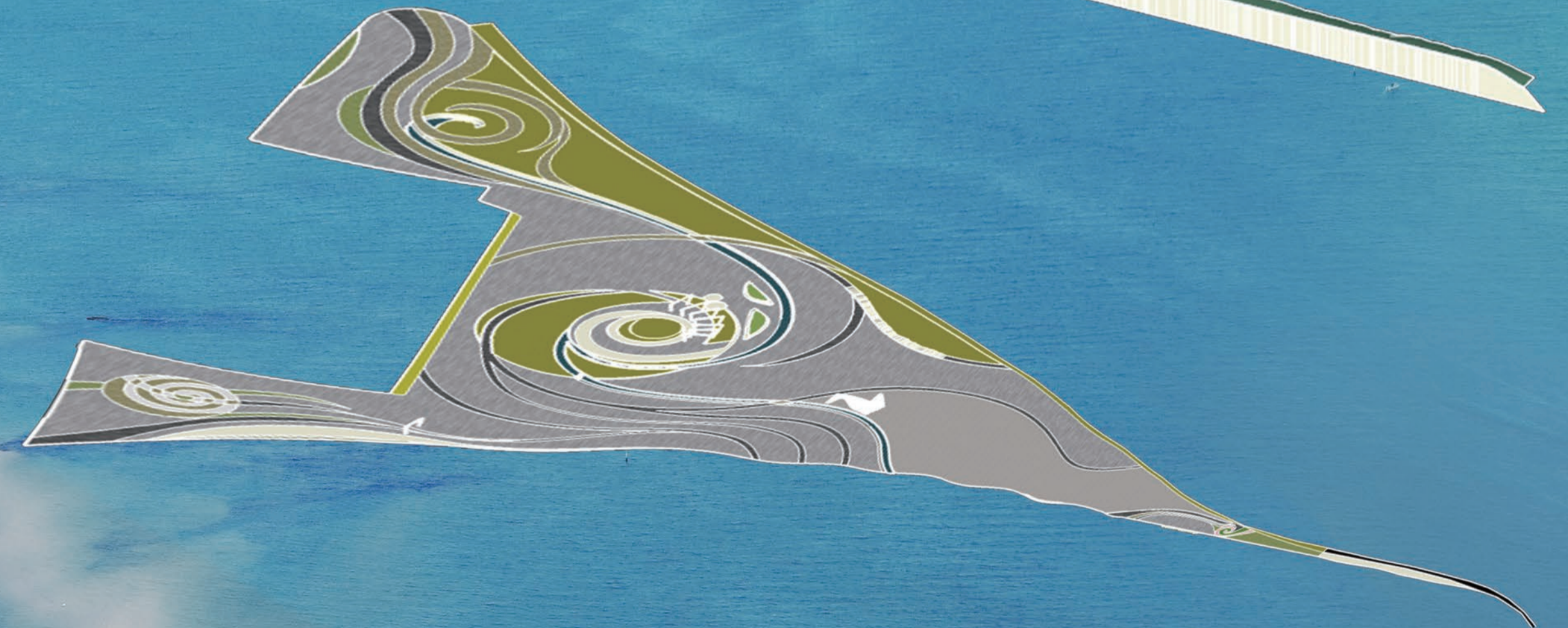
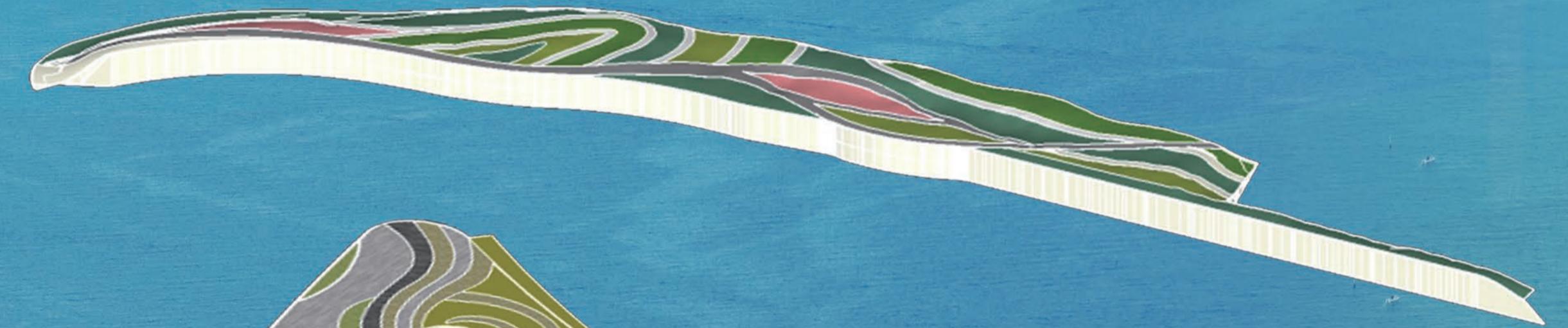
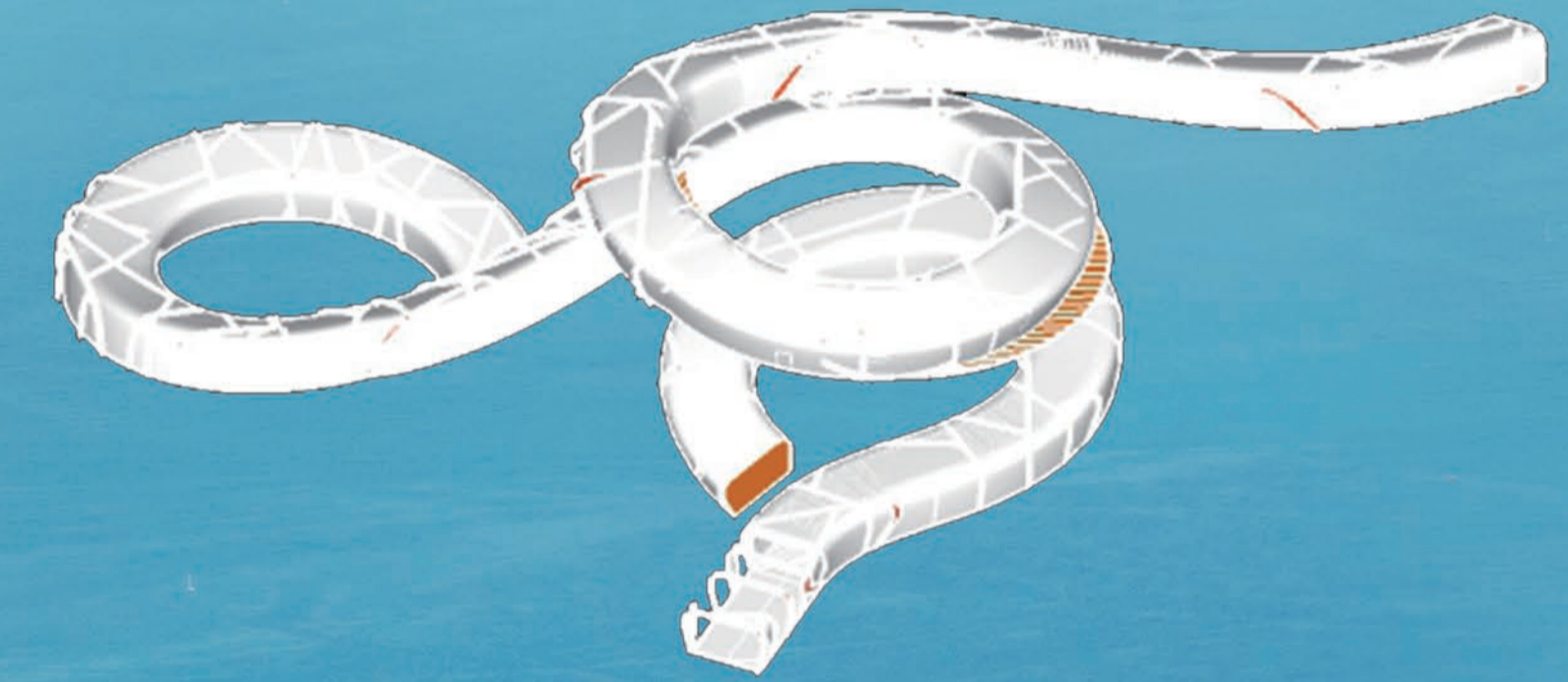
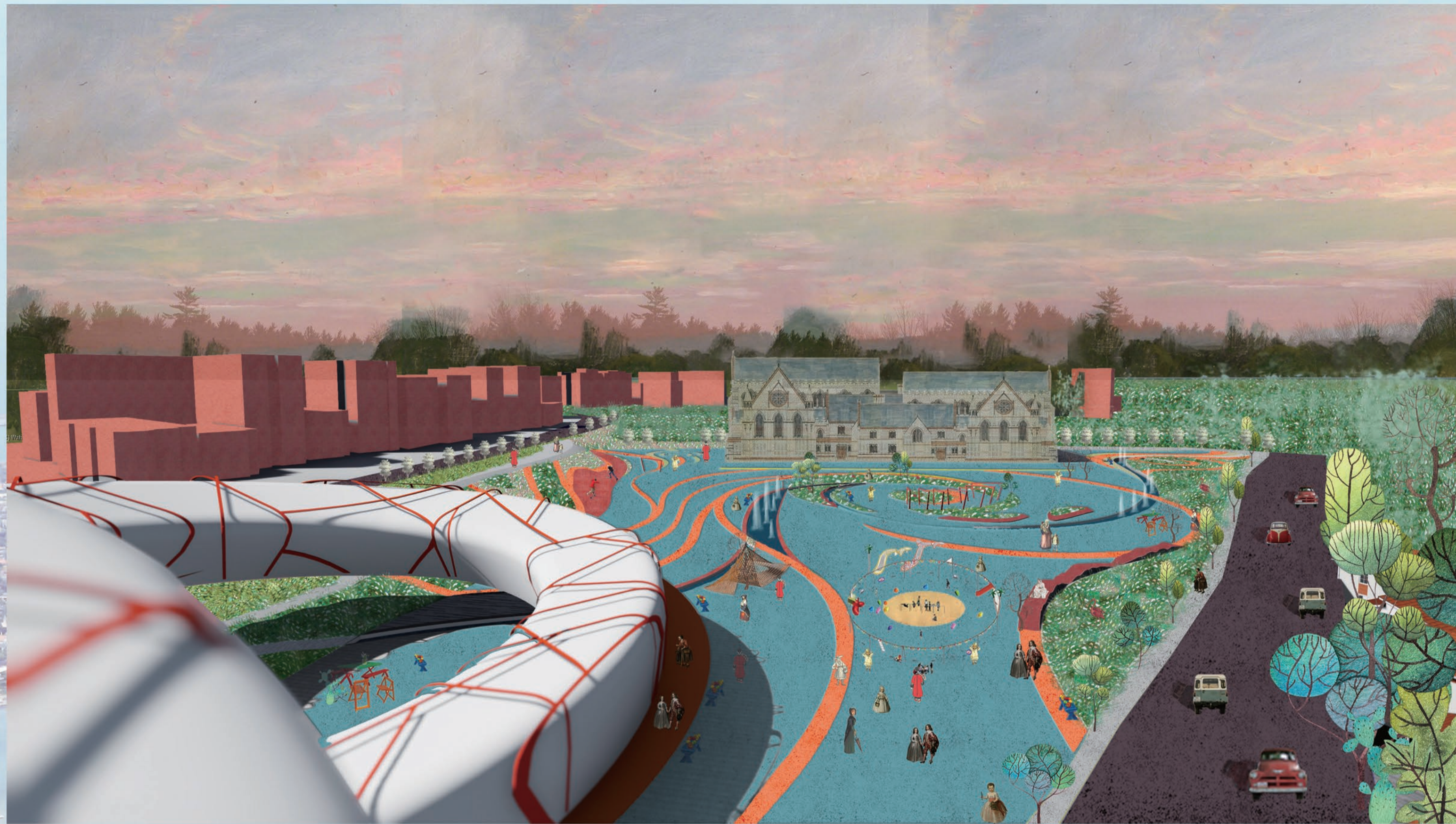


# Wind Captor



The design is divided into three parts. Curve square design. Design of sloping rainwater garden, And zhe design of main body of energy device.

The main body of the architecture is a spiral promenade, on which several doors and windows are set. And piezoelectric sheets and springs are placed between the doors and windows. When the wind blows to the building, the spring fixed on the wall deforms as the door or window shakes. Then the piezoelectric sheet connected to the spring is squeezed or stretched. And this process is exactly the way piezoelectric effect works. The electricity is eventually collected and can be incorporated into the grid after processing.