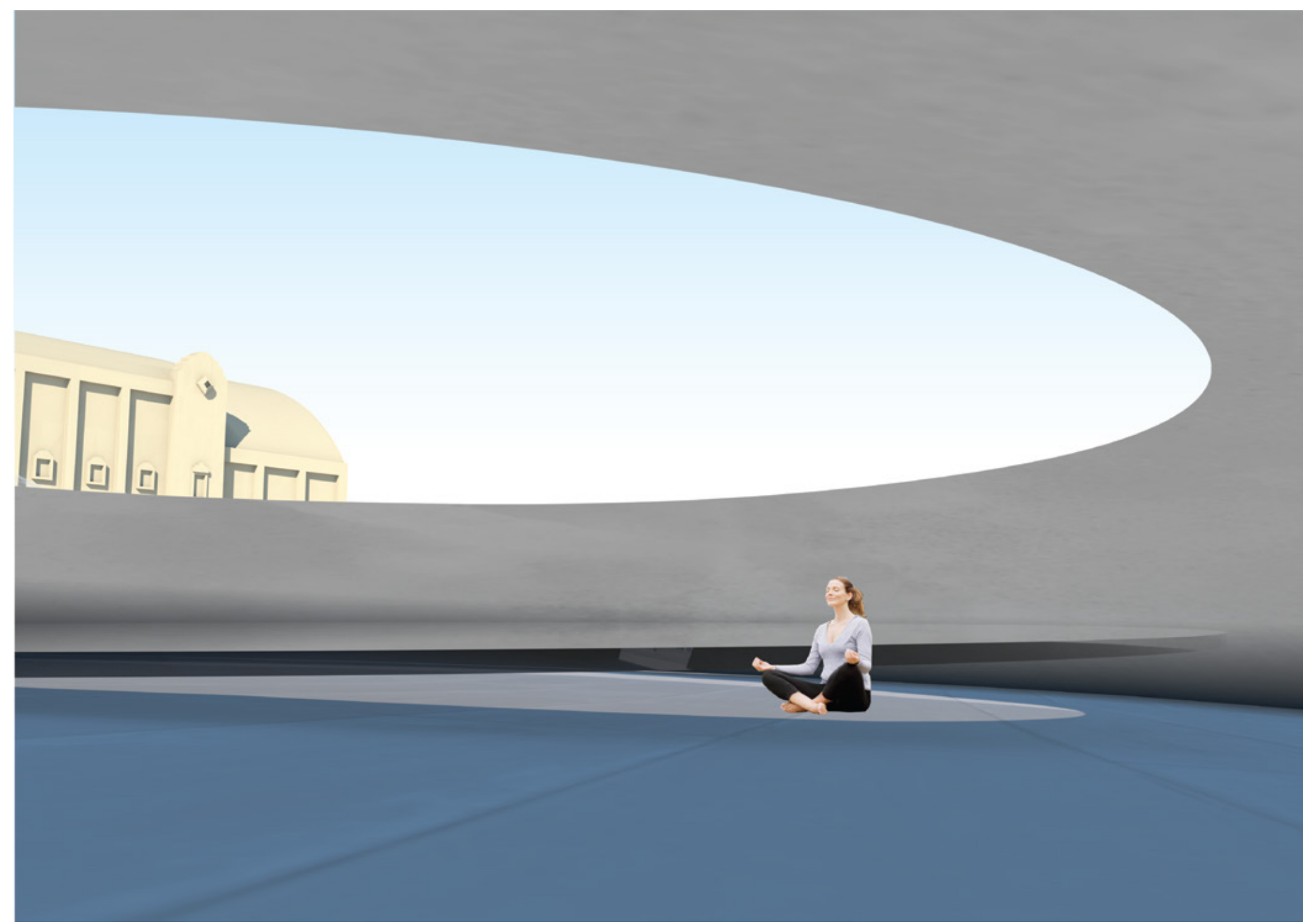


SECTION AA 1:500



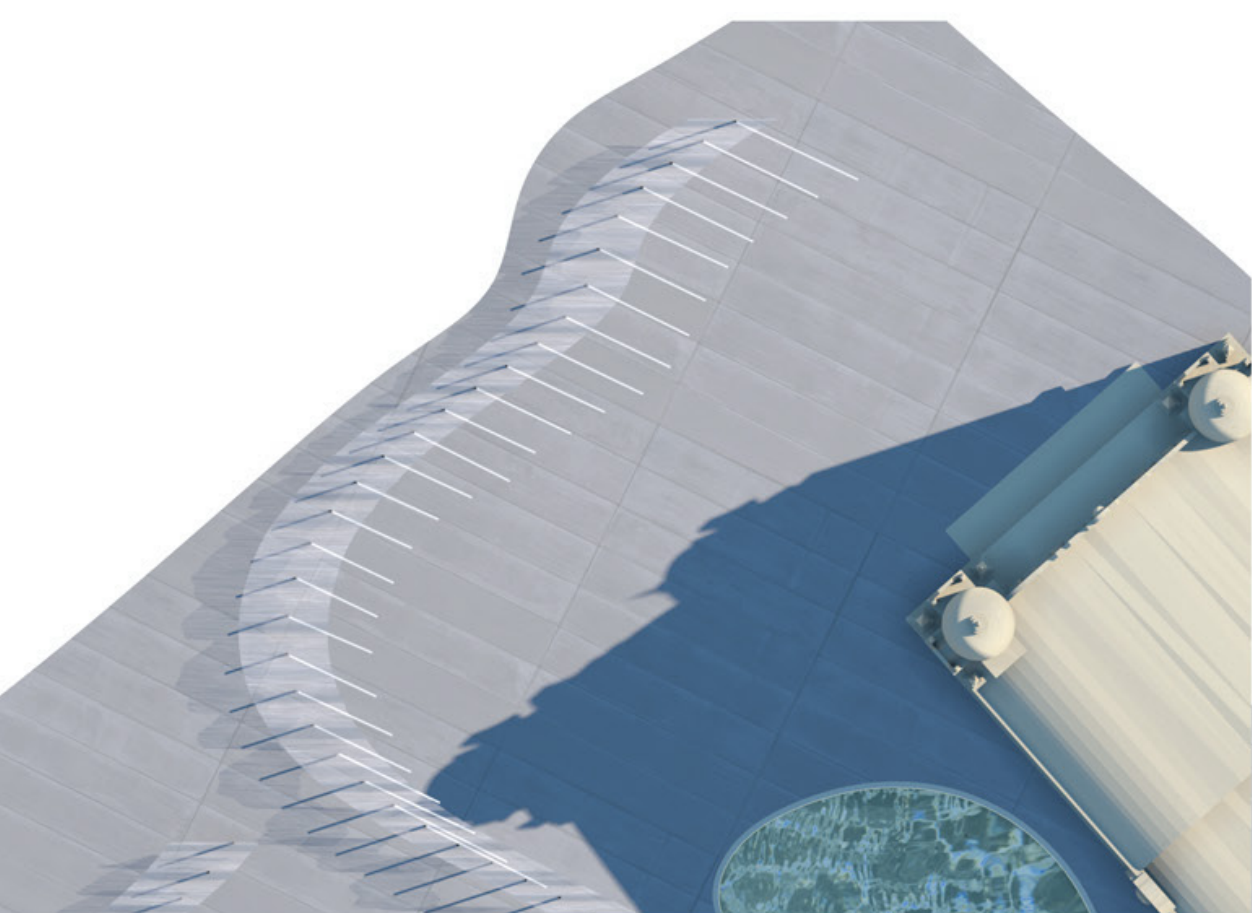
VIEW A - COMMUNIAL CENTRE  
Observing the sky and clouds



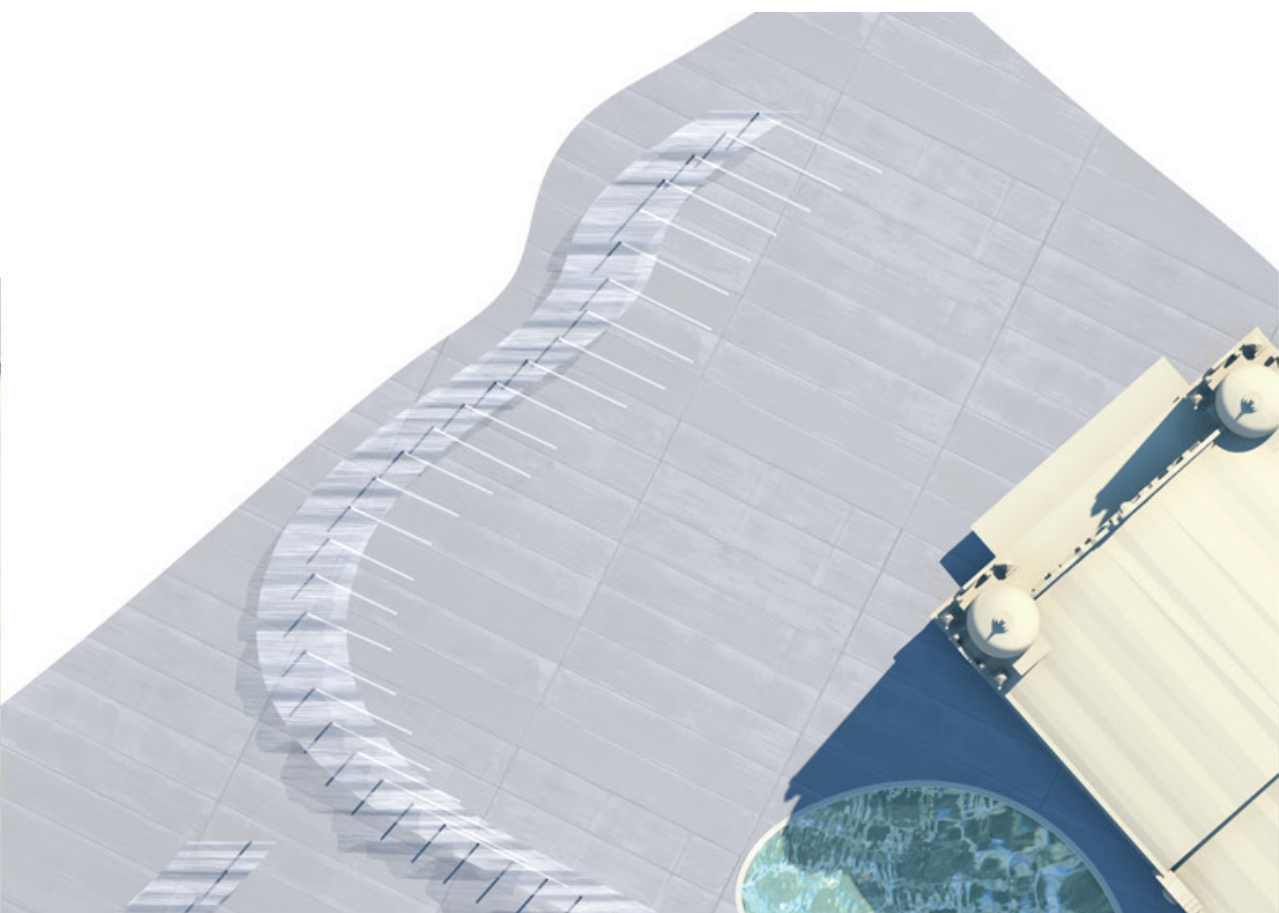
VIEW B - WIND OBSERVATION POD



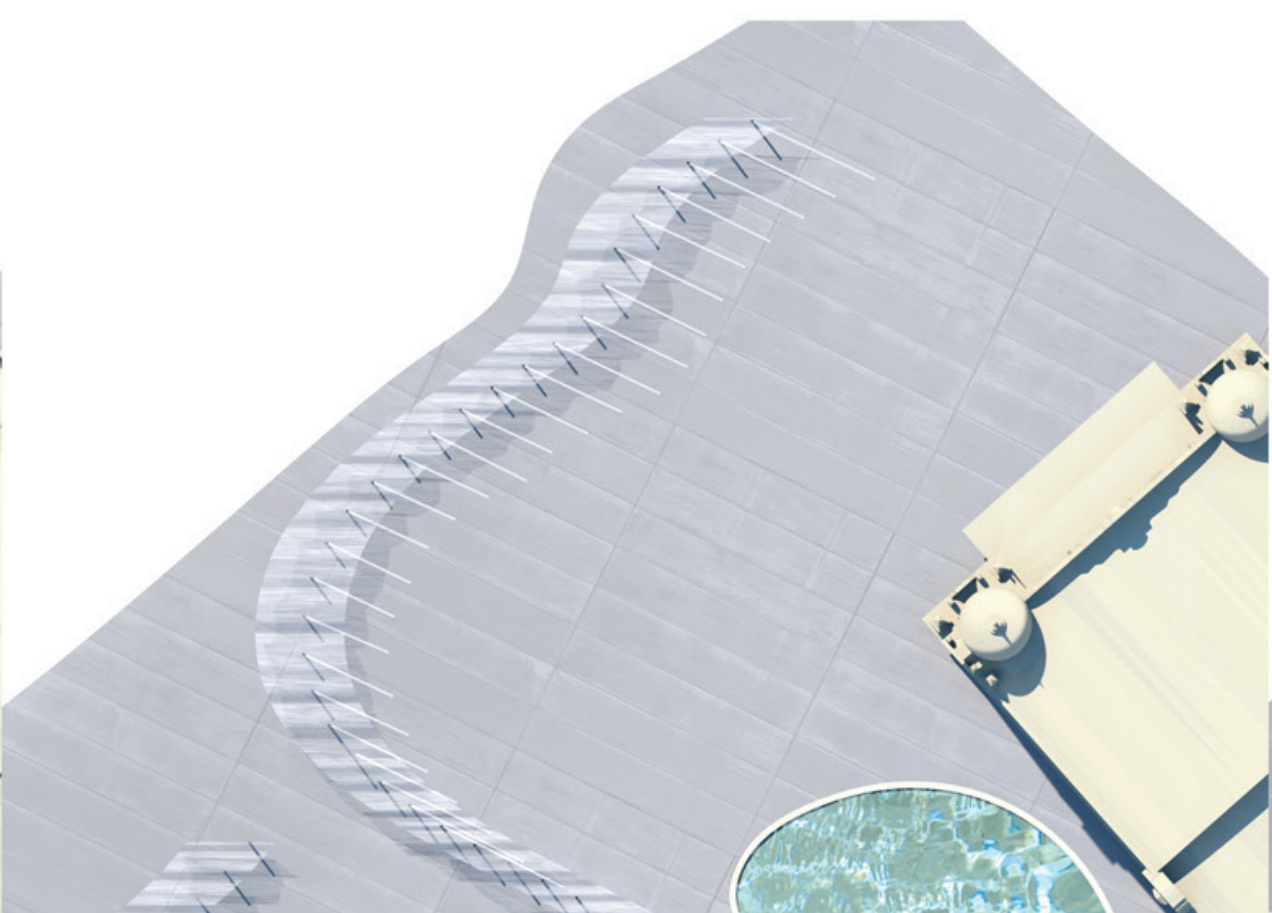
VIEW C - WATER OBSERVATION POD



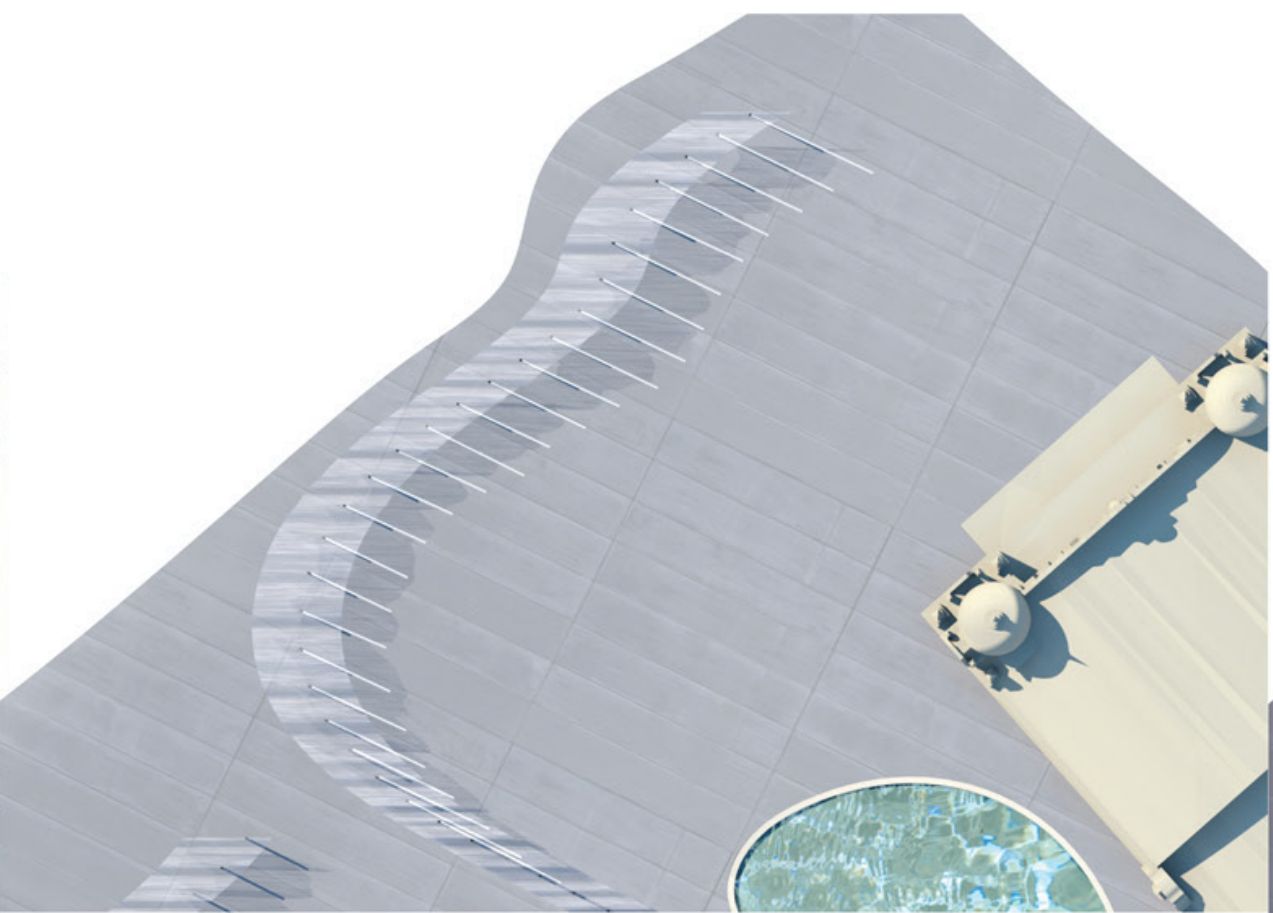
8AM



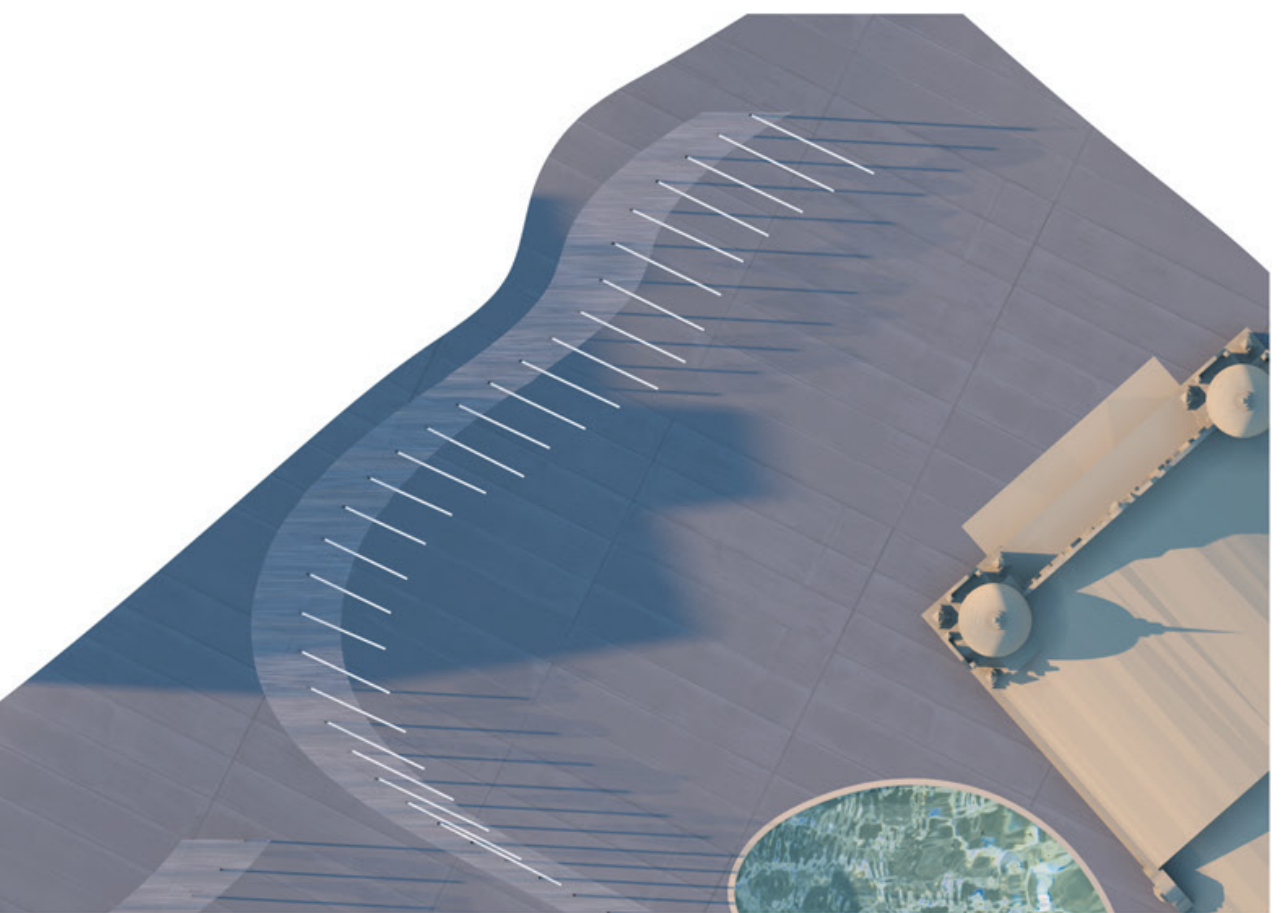
10 AM



1 PM



3 PM



5 PM

READING TIME THROUGH SITE  
Differentiation and small changes in height of the ground are located throughout site. Discretely located within these crevices are translucent solar cells. The height difference in the ground will completely disappear at around 3pm each day, due to the shadow in which the columns cast. This was done so with intention to be able to read time throughout site.