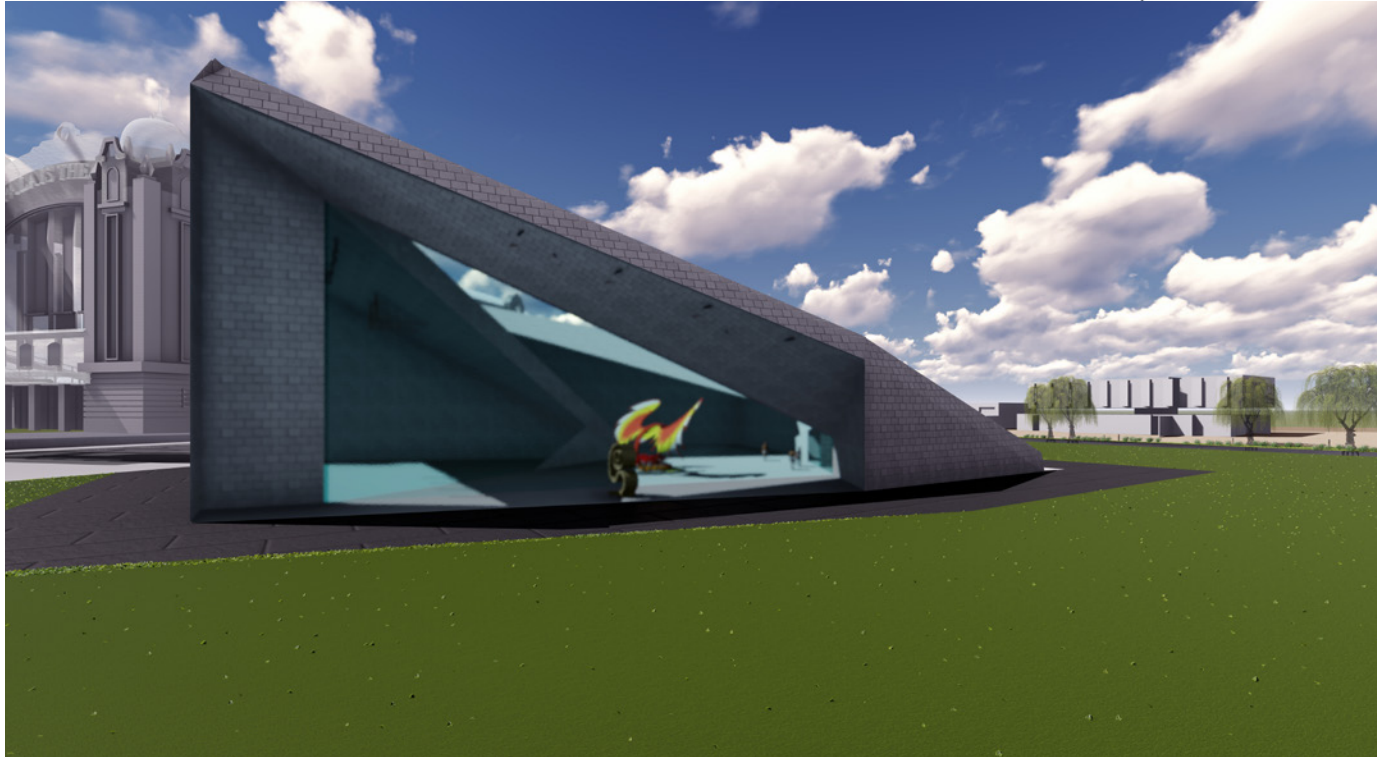
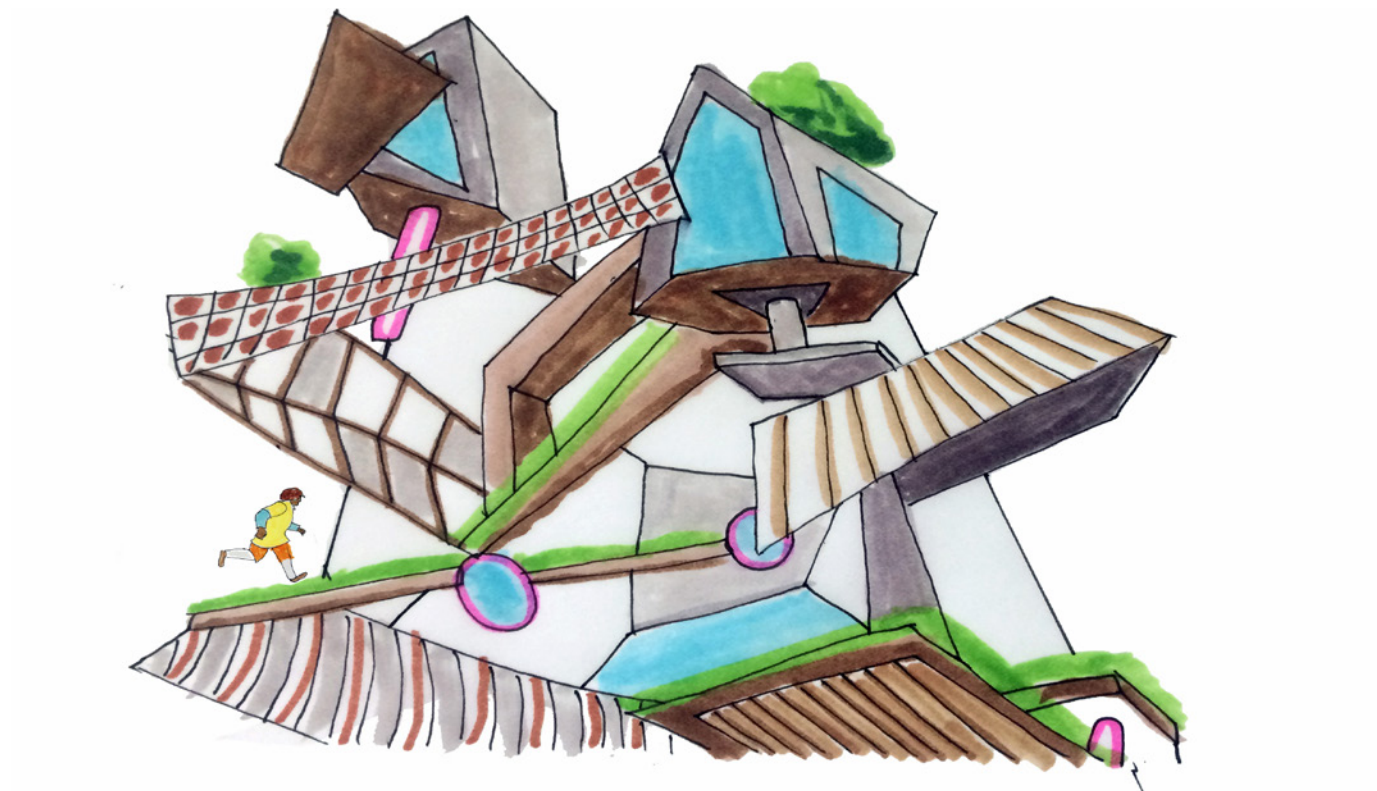
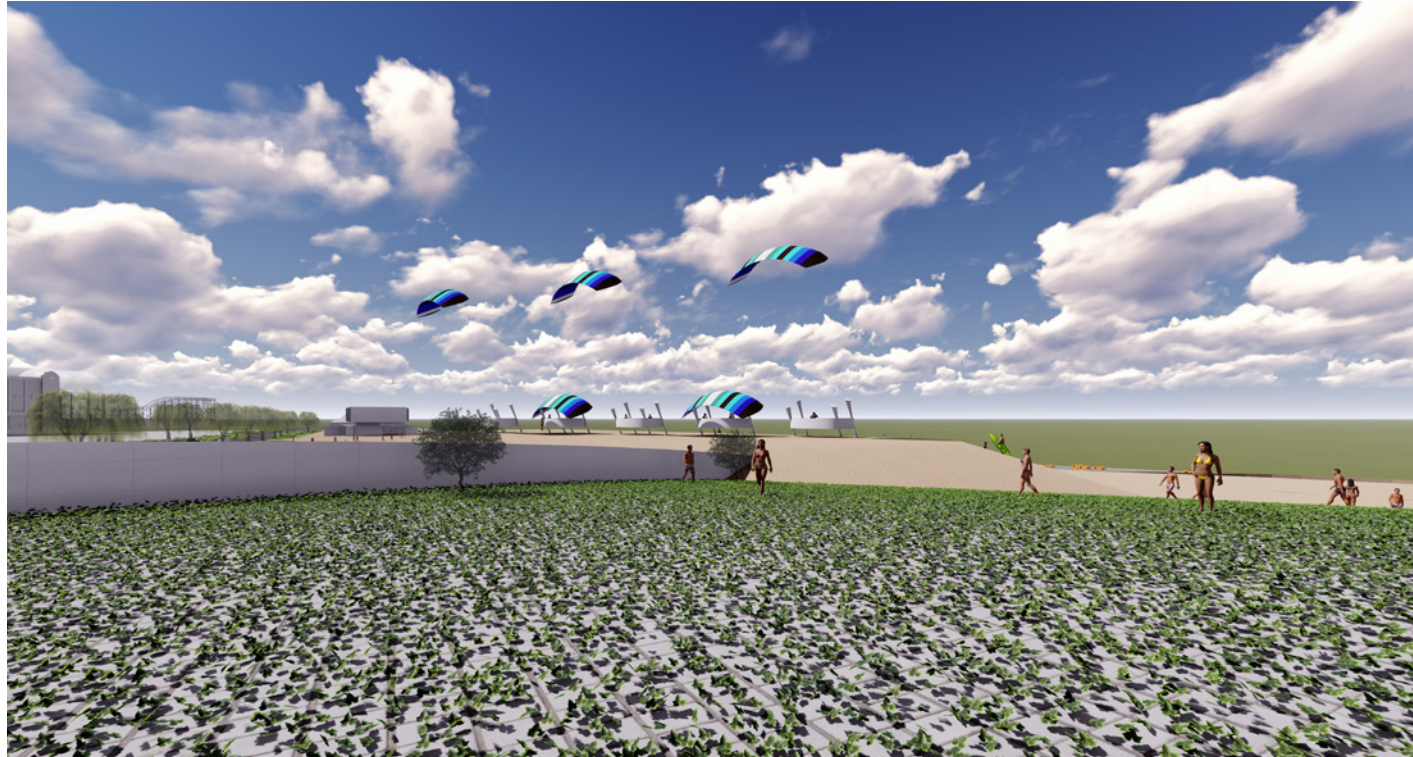


# LAND ART RECREATION AND RESILIENCY



**THE PEOPLE'S PERCH** is a mixed use structure designed to be climbed on, in, and around so that health enthusiasts of all skill levels can push their limits. Intersecting planes of glass, steel, and vegetation create a see through structure with interior walls and spaces well suited for art exhibitions and performances. Built with transducer plug-in capabilities.



**SUNSET BEACH BRIDGE** is an extension of St Kilda Beach in the form of a pedestrian overpass that connects the city to the shore. Locals and visitors can enjoy easier access to the beach, recreation, restaurants, and other amenities. While the bridge serves many functions, sunsets from here are some of the most remembered.



Jacka Boulevard is reduced to two lanes and given a new, gently curving, path. The scenic route calms traffic and improves pedestrian experience. New space is made available on each side of the road for beach adapted plants and storm water infiltration. Resiliency to dynamic shoreline conditions is increased and maintenance costs drop as a result.

## Sustainable Urban Ecosystem

A carefully selected combination of re-introduced native plants becomes a wildlife corridor that connects people and local fauna to adjacent open spaces, land ribbons, and parks.

A wide range of plant characteristics have been considered in order to develop a landscape and habitats that self-regulate and provide needed resiliency to increasingly powerful weather events in the future.



Photo: Publish or Perish

Phantom Wattle - Spreading shrub.



Photo: Baresh Sabz

Forrester's Bottlebrush - Multi or single trunk tree.



Photo: Greg Lehey

Enfield Grevillea - Creeping and climbing shrub



Photo: Landcare Research

Snow Daphne - Patchy ground cover and crack filler.



Photo: Cherree Densley

Coast Ixodia - Aromatic flower clusters.



Photo: J M Black

Tussock Grass - Perennial tufted grass.



Photo: ala.org.au

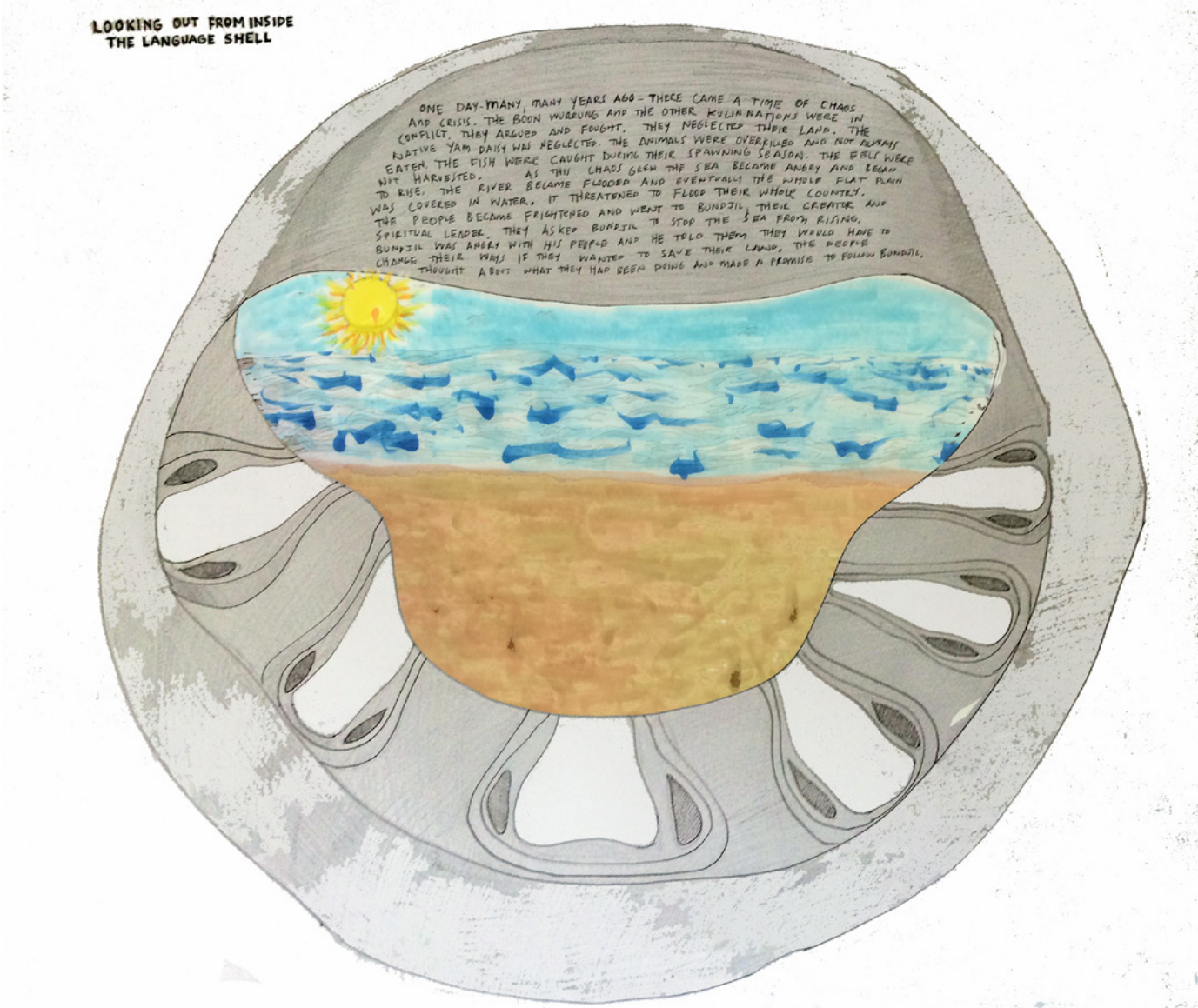
Flood Plain Rustyhood - Drought tolerant flower.



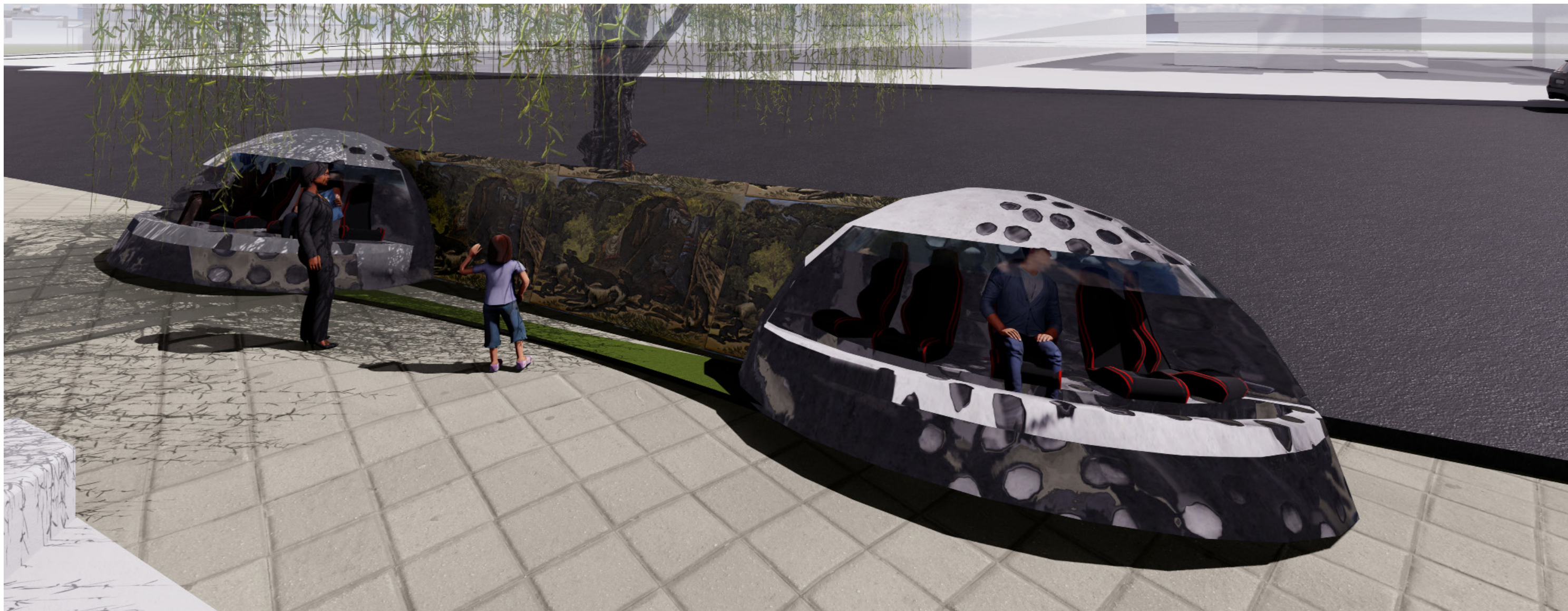
Photo: SASCC

Bead Glasswort - Salt tolerant succulent.

Additional Shrubs and Flowers, (not pictured here):  
Aniseed Boronia - Grampians Bitterpea - Wrinkled Buttons - Snowy River Westringia  
Lowen Phebalium - Dwarf Yellow Heads - Chariot Wheels - Lemon Scented Zieria



Six **LANGUAGE SHELTERS** located along the **TIME LINE** protect, honor, and share tradition. Boon Warrung is almost entirely an oral language with a rich history of story telling.



The shape of the **LANGUAGE SHELTER** inspired by sea shells and Aboriginal mia mia huts, is a deep vibrational listening space for full immersion in the Boonwarrung language. Inside each shelter, people of all ages are welcome to have an intimate listening experience, leaning back and listening to recordings of Boon Warrung elders sharing folk tales, creation stories, or personal family histories. The story of Bundjil the eagle and the Journey of the Ilk- Lilkwya (the eels) is brought to life while the listener takes in the scene stretching out in front of them.



Euro-Yroke: St. Kilda Esplanade Bluff, c 1870



Jimmy Dunbar in his mia mia shelter



Boon Warrung activist Louisa Briggs and grand children

LAND ART GENERATORS	The Time Line						
	WATT Time Tower	Sunset Beach Bridge	Kilda Kites	Battery Reef	Language Shelters	Multiple Obstacle Course	Emerald Hill Ngaree
Generates Electricity	●		●		●		
Stores Electricity				●			
Urban Fabric	●	●	●	●	●	●	●
Urban Ecosystem	●		●	●	●	●	●
Recreation	●	●	●	●	●		
Education	●	●	●	●	●		
Low Maintenance		●		●		●	
Economy Boost	●		●	●	●		

BENEFITS