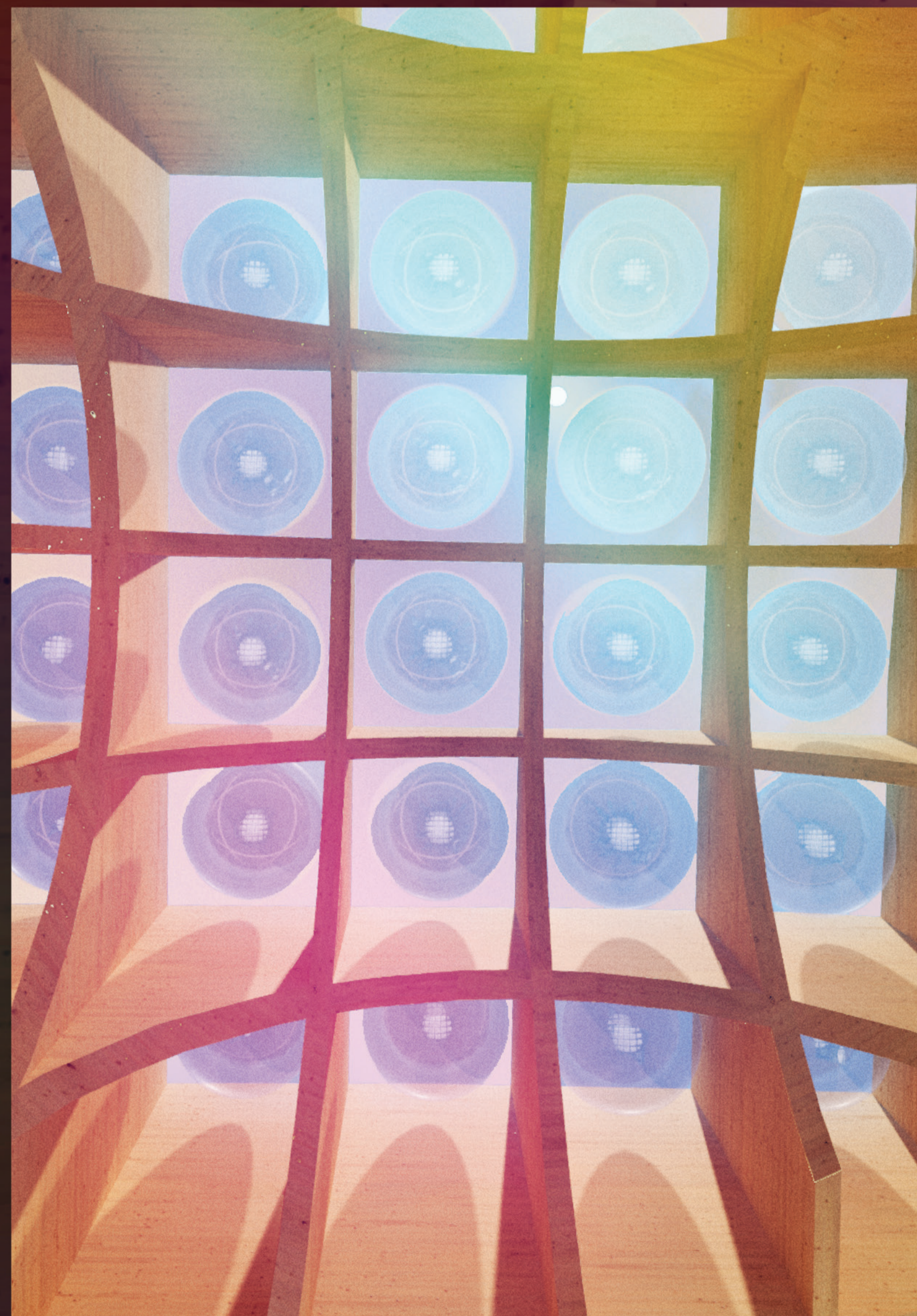


“DEW DROPS ON THE LAWN”

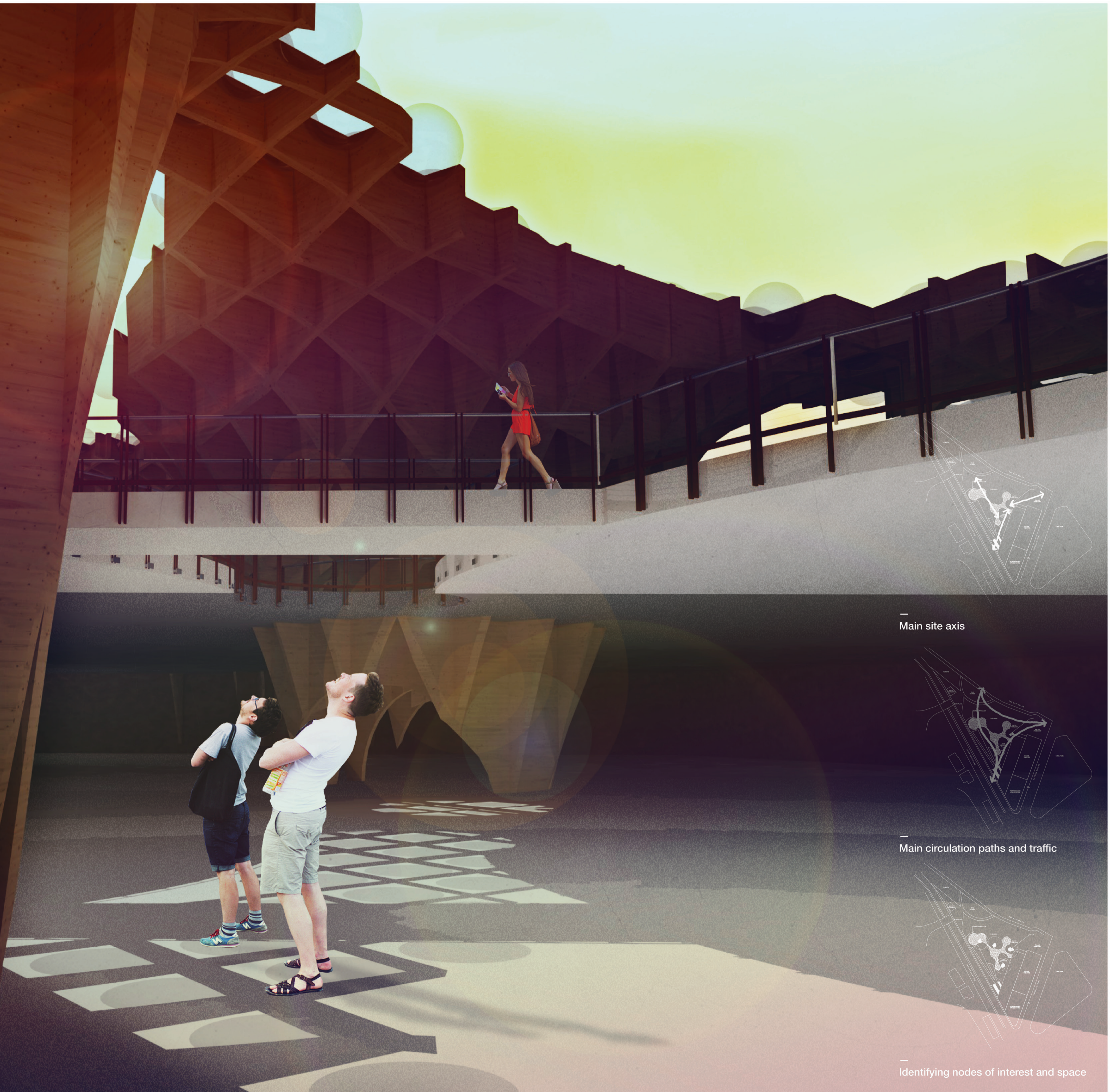
Dew Drops on the Lawn proposes a more sustainable, environmentally friendly, and engaging alternative to the existing master plan for the St Kilda Triangle. The Cross Laminated Timber grid is aligned with the Palais Theatre and provides a strong connection to Melbourne City’s past and future growth. The organic forms abstract the grid and respond to the needs of the St Kilda Triangle.

Rawlemon is a beautiful and more efficient alternative to traditional solar panels. Together, these systems provide an evocative installation, casting unique light and shade throughout the day. At night LEDs light the Rawlemon from within, glowing like stars almost within reach.

— Background image: The view from inside the Cultural precinct looking up to the Esplanade master plan level.



— An image of what it is like to view the “Rawlemon” from below the structure.



— Main site axis

— Main circulation paths and traffic

— Identifying nodes of interest and space