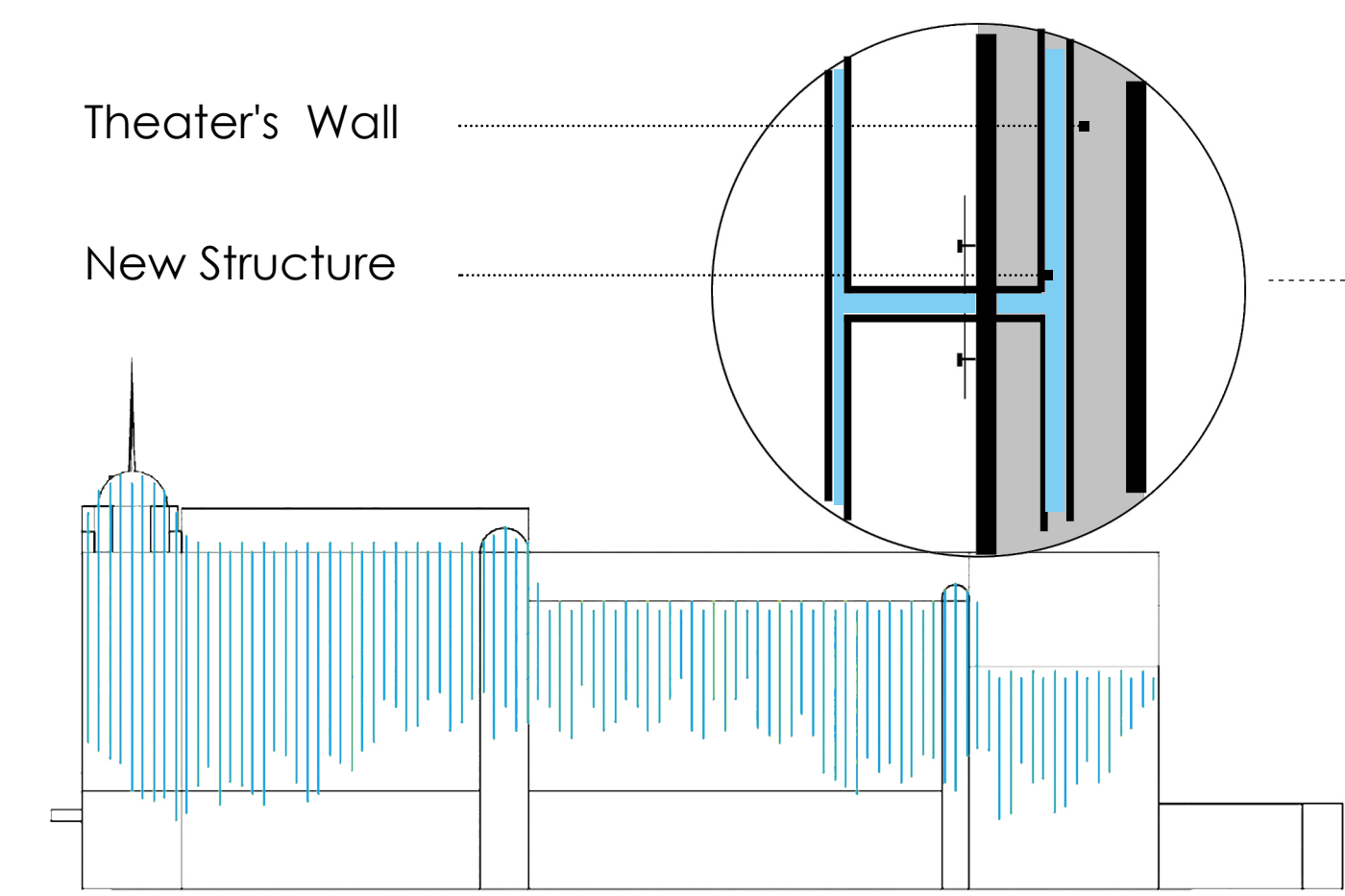


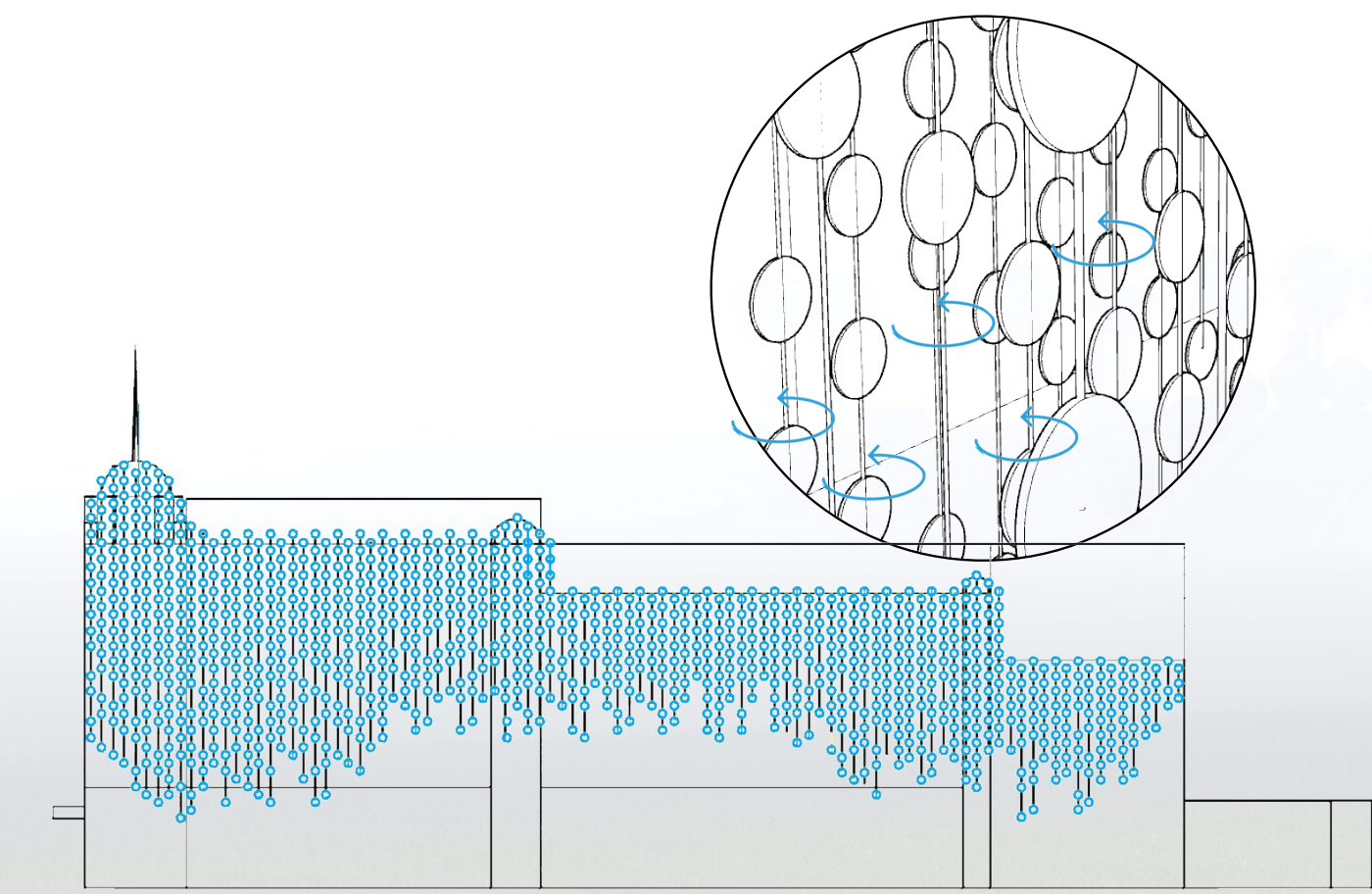
# STRUCTURE

The curtain of small turbines is suspended in mid-air. This is possible as the main support columns are hidden within the theatre wall. This transfers the installation's weight and force into the ground allowing the air to freely flow throughout the energy generating turbines.



# TECHNOLOGY

The wind generating capabilities of this installation is integrated into a space and build creating a seamless transition between the two concepts.



# SPACE

Under the installation there is an outside open air theatre. This space is where performers and audiences can interact. The connection between the installation creates a connected space between the green park and people.

